



**Solid Research**  
**Solid Relationships**

# Fundamental Outlook

# Global Market Setup

- US markets yesterday, were closed for New Year's Day
- The European indices too were closed.
- Dow futures are currently trading with **gains of ~167 points (+0.4%)**
- Meanwhile, the Asian indices are trading with **gains of upto 2%**, with several markets remained shut including Japan

Global Cues: **Positive**

# Indian Market Setup

**Indian equities** began 2026 on a positive note, logging gains for the second consecutive session, driven by rallies in auto, IT and banking stocks, even as steep declines in FMCG names capped the upside.

- **Nifty50** ended **with gains of 17 points at 26,147 (+0.1%)**.
- In the broader market, **Nifty Midcap100 gained 0.4%**, while **Smallcap100 ended in marginal red**.
- **FII**s: **-3,268cr**; **DII**s: **+₹1,525cr**
- **GIFT Nifty** is currently trading **+0.2% higher (48 points up)**

**Domestic Cues: Positive**

# Stocks in News

2-Jan-26

**Auto:** Auto wholesales remained strong in Dec'25 and surpassed our expectations for quite a few OEMs, the back of: 1) positive consumer sentiment led by GST rate cuts, 2) strong marriage season in Nov'25 after an equally strong festive season, 3) relatively low base given weak demand macro last year. PV numbers were mixed while 2W, CV and tractors were above estimates

**View:** Positive for TVS, Hero, Ashok Leyland, M&M

**South Indian Bank:** Gross advances surge 11.27% to Rs 96,765 crore Vs Rs 86,966 crore. Total deposit zooms 12.17% to Rs 1.18 lakh crore Vs Rs 1.05 lakh crore. CASA increases 14.65% to Rs 37,640 crore Vs Rs 32,830 crore. CASA ratio rises to 31.84% Vs 31.15%

**View:** Positive

**Aurobindo Pharma:** The company's subsidiary, Auro Pharma, has approved the acquisition of the non-oncology prescription formulations business of Khandelwal Laboratories on a going-concern basis through a Business Transfer Agreement for Rs 325 crore.

**View:** Positive

# Fundamental Actionable Idea

## Devyani International

**CMP INR 145 TP INR 180, 24% Upside; Buy, MTF Stock**

- Devyani International Limited (DIL) and Sapphire Foods India Limited (SFIL) have approved a scheme of arrangement for the merger of SFIL into DIL. The transaction consolidates Yum! Brands' India operations under a single listed entity.
- The merger will be executed through a share-swap, with 177 equity shares of DIL to be issued for every 100 equity shares of Sapphire. Post completion, DIL will hold franchise rights for KFC and Pizza Hut across the entire Indian market, along with a strengthened international presence in Sri Lanka.
- The transaction will add Devyani ~58% accretion to revenues ~57% accretion to EBITDA against a ~47% equity dilution. It will be completed within 15-18 months. Strategic focus of the merged entity will be on accelerated KFC expansion and revitalisation of Pizza Hut.

**View: Buy**

# Fundamental Actionable Idea

## Indian Bank

**CMP INR 833, TP INR 900, 8% Upside, Buy, MTF Stock**

- Total business of the bank grew by 13.4% YoY/2.3% QoQ to INR14.3t.
- Gross advances grew by 14.5% YoY/ 3.3% QoQ to INR6.4t (marginally better than our estimate of 14.2% YoY/ 2.3% QoQ for Net Advances), driven by continuous traction in RAM segment which grew by 17% YoY/ 4.3% QoQ to INR3.92t.
- Deposits grew 12.5% YoY/ 1.7% QoQ to INR7.9t (inline to our estimate), led by robust growth in CA deposits at 19.4% YoY and steady growth in SA deposits at 7.7% QoQ.
- Overall loan growth stood better than our estimate, while deposits growth stood largely inline. As a result, calculated CD ratio (on gross advances) increased to 81% vs 79.8% in 2QFY26.
- INBK maintains the best-in-class coverage ratio and lower slippages, which provides comfort on incremental credit costs.
- With 40% of MCLR book to be repriced, the bank expects NIMs to bottom out in 3Q, with improvement starting to show up from 4Q onward.

**View: BUY**



# Downgrade to Neutral

## ITC

**CMP INR364, TP INR400, 10% Upside, Downgrade to Neutral, MTF Stock**

- The government in its recent notification has increased taxes on cigarettes, effective from 1st Feb'26. New rates will increase the taxes on cigarettes by ~50% (assuming NCCD continues). ITC will need a price hike of at least 25% at a portfolio level just to maintain the current net realization per cigarette stick. Moreover, earlier in GST 2.0, the government had revised GST rate on cigarette from 28% to 40% which will also implement from 1st Feb'26.
- Tax stability had impacted the illicit cigarette market, as its volume share contracted by ~150bp over the last 4-5 years. ITC enjoyed this period, as its cigarette volume saw ~5% CAGR in the last five years.
- If there is no change in hiked taxes, we expect that it will significantly impact the legal cigarette market, and the price arbitrage between legal and illegal brands will be huge. It can shift volume from legal to illicit brands and could lead to downtrading within legal brands, thus weakening the product mix for ITC.
- We model 6% EBIT contraction in FY27 and will monitor the price hike process. Hence, our EPS cut is ~12% for FY27 and FY28. Earnings pressure on cigarettes would take away the near-term catalysts (soft tobacco prices, recovery in FMCG and Paper) and comfort on valuation.

**View: Negative**



# Target Achieved



## 20% Gains

Reco Date	Call Type	Reco Price
24 <sup>th</sup> Oct'25	Investment Idea	₹921

Today Price	Date	Return	Duration
₹1,110	1 <sup>st</sup> Jan'26	20% Gain	69 Days

Investment in securities market are subject to market risks, read all the related documents carefully before investing.

# Book Profit: Metal Basket (21.4% Gains)

We recommend booking profits in our Metal Focus 5 Basket, which has delivered strong returns of 21.4% in less than 2 months, significantly outperforming the Nifty200 benchmark return of 1.7%.

- **Reco Date:** 11-Nov-25
- **Exit Date:** 01-Jan-26 (less 2 months)
- **Basket Return:** +21.4%
- **Benchmark (Nifty200) Return:** +1.7%

Stock Name	Weightage (%)	Reco Price	Closed Price	Profit/Loss (%)
HINDCOPPER	20	338	527	55.9
NATIONALUM	20	257	315	24.1
VEDL	20	520	604	16.2
NMDC	20	75	83	10.7
TATASTEEL	20	181	181	0
Basket Return				21.4%

# Focus Investment Ideas

All Stocks Available in MTF

Duration : 1 Year Horizon

Stock Name	Rating	CMP (Rs)	Target (Rs)	Upside (%)
HCL Tech	Buy	1,632	2,150	32%
Bharat Electronics	Buy	398	500	26%
ICICI Bank	Buy	1,338	1,700	27%
TVS Motors	Buy	3,794	4,159	10%
KEI Industries	Buy	4,515	4,960	10%

# Technical Outlook



# Nifty Technical Outlook

**NIFTY (CMP : 26146)** Nifty immediate support is at 26050 then 25950 zones while resistance at 26250 then 26325 zones. Now it has to hold above 26100 zones for an up move towards 26250 and 26325 zones while supports can be seen at 26050 then 25950 zones

1-Nifty50 - 01/01/26



Investment in securities market are subject to market risks, read all the related documents carefully before investing.

# Bank Nifty Technical Outlook

2-Jan-26

**BANK NIFTY (CMP : 59711)** Bank Nifty support is at 59500 then 59250 zones while resistance at 60000 then 60114 zones. Now it has to hold above 59500 zones for an up move towards 60000 then 60114 marks while on the downside support is seen at 59500 then 59250 levels.

1-Niftybank - 01/01/26



Investment in securities market are subject to market risks, read all the related documents carefully before investing.



# Sensex Technical Outlook

2-Jan-26

**Sensex (CMP : 85188)** Sensex support is at 84800 then 84600 zones while resistance at 85500 then 85700 zones. Now it has to hold above 85000 zones for an up move towards 85500 then 85700 zones while on the downside supports are seen at 84800 then 84600 levels.

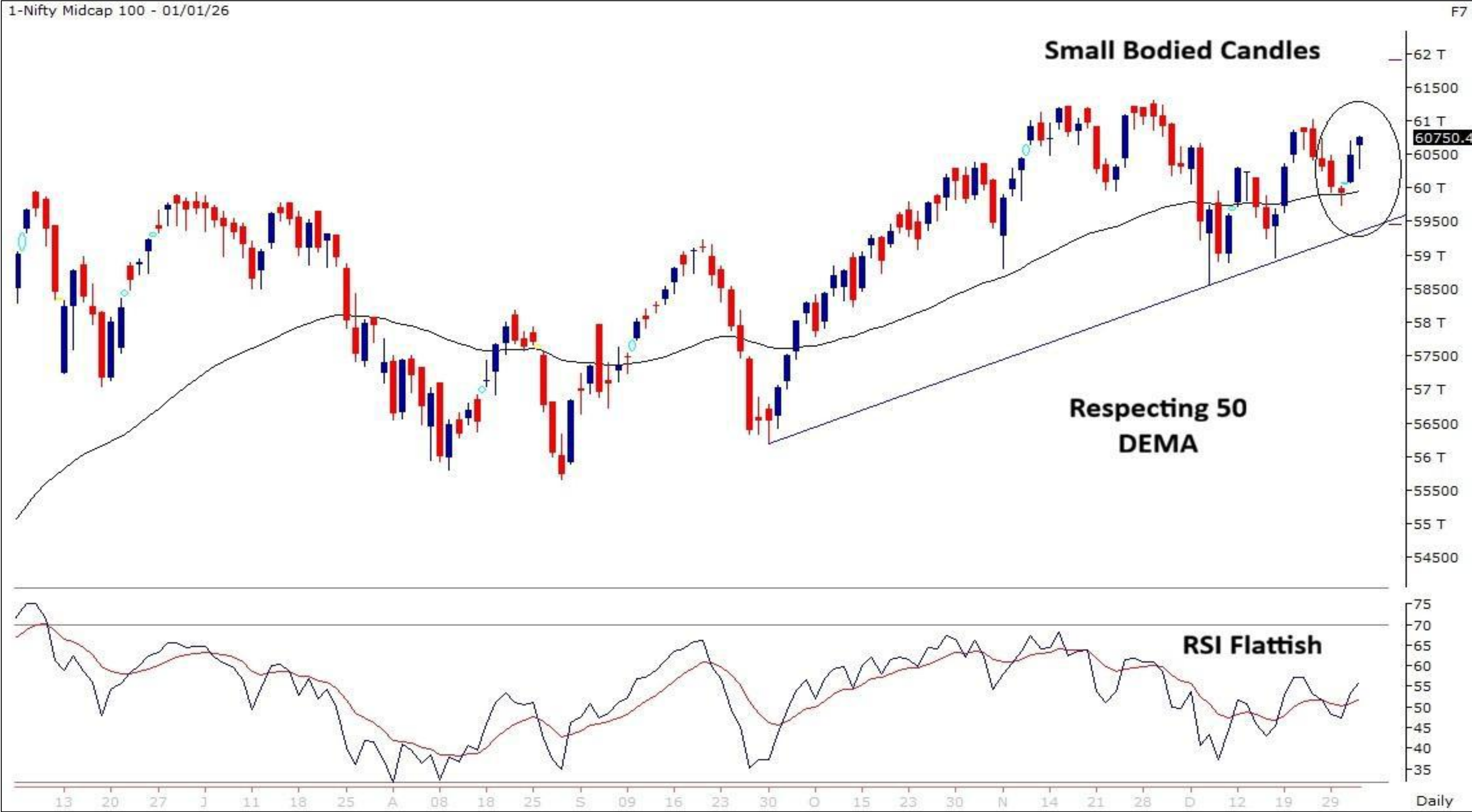
1-S&P BSESENSX - 01/01/26



Investment in securities market are subject to market risks, read all the related documents carefully before investing.

# Midcap100 Index Technical Outlook

2-Jan-26



## Nifty Midcap100 Stats

Advance  
57

Decline  
43

- Bounce up from 50 DEMA support zones and formed a small bodied candle with long lower shadow.



# Smallcap250 Index Technical Outlook

2-Jan-26



## Nifty SmallCap250 Stats

Advance	Decline
100	150

- Hovering around 50 DEMA hurdle zones.

# Sectoral Performance

2-Jan-26

	Closing	% Change							
Indices	01-Jan	1-day		2-days		3-days		5-days	
NIFTY 50	26147		0.06%		0.80%		0.79%		0.02%
NIFTY BANK	59712		0.22%		0.91%		1.32%		0.89%
NIFTY MIDCAP 100	60750		0.44%		1.40%		1.25%		0.49%
NIFTY SMALLCAP 250	16668		-0.10%		1.07%		0.86%		0.14%
NIFTY FINANCIAL SERVICES	27667		0.19%		1.04%		1.11%		0.37%
NIFTY PRIVATE BANK	28788		0.23%		1.25%		1.54%		1.15%
NIFTY PSU BANK	8571		0.45%		1.66%		3.38%		3.15%
NIFTY IT	38172		0.76%		0.46%		-0.29%		-2.06%
➡ NIFTY FMCG	53719		-3.17%		-2.39%		-2.67%		-2.53%
NIFTY OIL & GAS	12233		0.01%		2.67%		2.35%		2.29%
NIFTY PHARMA	22633		-0.40%		0.41%		0.24%		-0.55%
➡ NIFTY AUTO	28481		1.03%		2.12%		3.22%		2.13%
NIFTY METAL	11256		0.79%		2.26%		4.33%		4.78%
NIFTY REALTY	885		0.84%		1.78%		0.92%		0.02%
NIFTY INDIA DEFENCE	7727		-0.26%		1.08%		-0.01%		-0.80%

- Among the Sectoral Indices Nifty Auto showed relative outperformance while weakness was seen in Nifty FMCG.



## Technical Pick **CSBBANK**

>> RECO : **Buy** >> CMP : 472  
 >> SL : 438 >> TGT : 538  
 >> Risk : 7% >> Reward : 14%

## MTF Stock

**CSB Bank**



## Technical View

- >> Stock has given a breakout above its previous swing high resistances with rising volumes.
- >> The medium term chart structure indicates a breakout from a 'Cup and Handle' pattern which is a bullish sign.
- >> The RSI indicator is trending upward which confirms the bullish momentum.
- >> We advise traders to buy the stock at CMP Rs. 472 with stop loss below Rs. 438 for potential target around Rs. 538 in 4 weeks.

# Technical – Conviction Delivery Idea

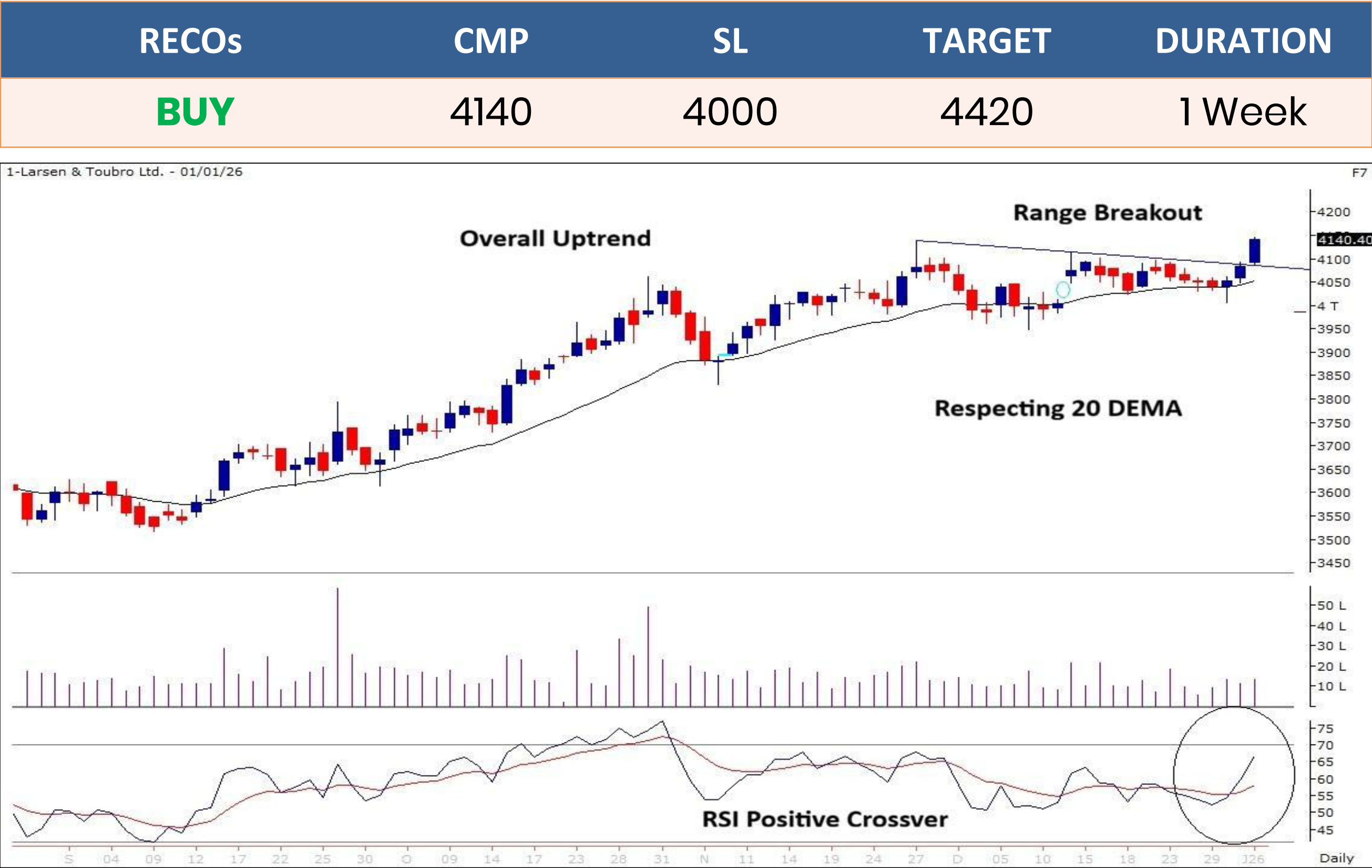
2-Jan-26

LT

(Mcap ₹ 5,69,546 Cr.)

F&O Stock, MTF stock

- Range breakout on daily chart.
- Strong bodied bullish candle.
- Respecting 20 DEMA support zones.
- Rising Volumes visible.
- RSI momentum indicator giving positive crossover.
- We recommend to buy the stock at CMP ₹4140 with a SL of ₹4000 and a TGT of ₹4420.



Investment in securities market are subject to market risks, read all the related documents carefully before investing.



## TVSMOTOR

(CMP: 3794 , Mcap ₹ 1,80,267 Cr.)

**F&O Stock, MTF stock**

- Range breakout at “ATH” zones.
- Respecting 50 DEMA support zones.
- High volumes on up moves.
- RSI indicator positively placed.
- Immediate support at 3600.



## PNBHOUSING

(CMP: 986, Mcap ₹ 25,702 Cr.)

**F&O Stock, MTF stock**

- Range breakout on daily chart.
- Strong bodied bullish candle.
- Surge in traded volumes.
- RSI momentum indicator rising.
- Immediate support at 930.



# Technical Chart Pattern for the Day

**GMRAIRPORT** (Mcap ₹ 1,11,397 Cr.) (CMP : 105) F&O Stock, MTF stock

2-Jan-26



- Bullish “Pennant” pattern formation; Support : 101 , Resistance : 110

# Derivative Outlook



# Nifty : Option Data

2-Jan-26

- Maximum Call OI is at 26200 then 26300 strike while Maximum Put OI is at 26000 then 26100 strike.
- Call writing is seen at 26200 then 26250 strike while Put writing is seen at 26150 then 26100 strike.
- Option data suggests a broader trading range in between 25700 to 26500 zones while an immediate range between 26000 to 26300 levels.




Investment in securities market are subject to market risks, read all the related documents carefully before investing.

# Option - Buying side strategy

Index	Single Leg Buying	Multi Leg Strategy
<b>Nifty</b> (Weekly)	26150 CE if it holds above 26100	Bull call Spread (Buy 26200 CE and Sell 26300 CE) at net premium cost of 30-35 points
<b>Sensex</b> (Weekly)	85600 CE till it holds above 85000	Bull call Spread (Buy 85600 CE and Sell 85800 CE) at net premium cost of 50-60 points
<b>Bank Nifty</b> (Monthly)	60700 CE till it holds above 59500	Bull call Spread (Buy 60000 CE and Sell 60500 CE) at net premium cost of 220-230 points

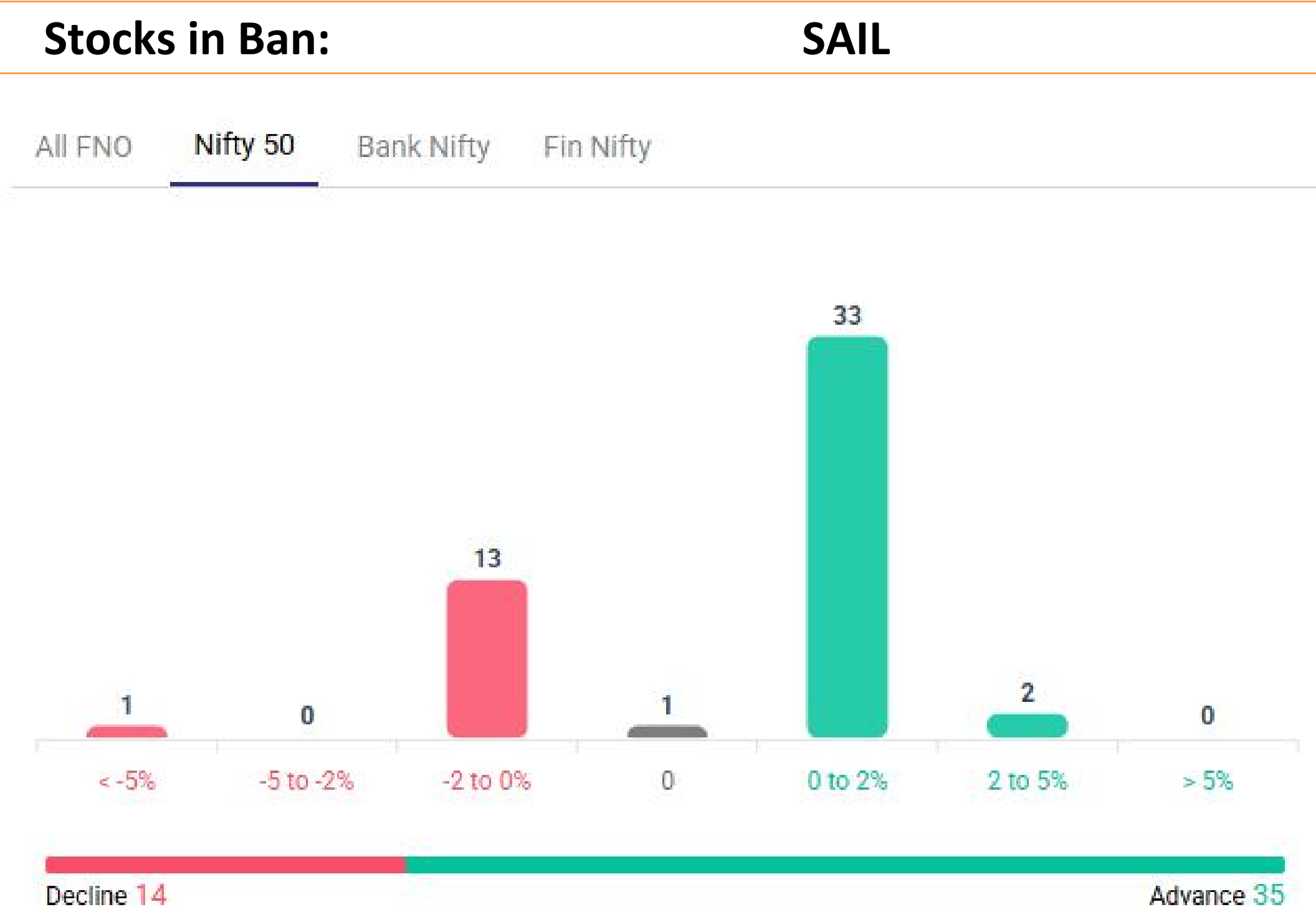
# Option - Selling side strategy

Index	Writing
<b>Nifty</b> (Weekly)	25850 PE & 26400 CE
<b>Sensex</b> (Weekly)	83900 PE & 86600 CE
<b>Bank Nifty</b> (Monthly)	57800 PE & 61700 CE

Weekly Option Range for Option Writers based on Different Confidence Band								
Date		2-Jan-26	Weekly Expiry		6-Jan-26	Days to weekly expiry		3
								
Nifty		26147	India VIX		9.2			
Confidence Band	Probability	% Away From Spot	Range				Total Premium (Put + Call)	Types of Trades
			Put	Premium	Call	Premium		
1.00	68%	± 0.6%	26000	26	26300	25	51	Aggressive
1.25	79%	± 0.8%	25950	18	26350	15	33	Less Aggressive
1.75	92%	± 0.9%	25900	13	26400	8	21	Conservative
2.00	95%	± 1.1%	25850	9	26450	5	14	Most Conservative
Date		2-Jan-26	Monthly Expiry		27-Jan-26	Days to weekly expiry		17
Bank Nifty		59712						
Confidence Band	Probability	% Away From Spot	Range				Total Premium (Put + Call)	Types of Trades
			Put	Premium	Call	Premium		
1.00	68%	± 2.0%	58500	175	60900	225	400	Aggressive
1.25	79%	± 2.7%	58100	122	61300	139	261	Less Aggressive
1.50	87%	± 3.2%	57800	92	61600	94	187	Neutral
1.75	92%	± 3.7%	57500	72	61900	64	136	Conservative
2.00	95%	± 4.2%	57200	56	62200	46	102	Most Conservative
Investments in securities markets are subject to market risks. Please read all related documents carefully.								



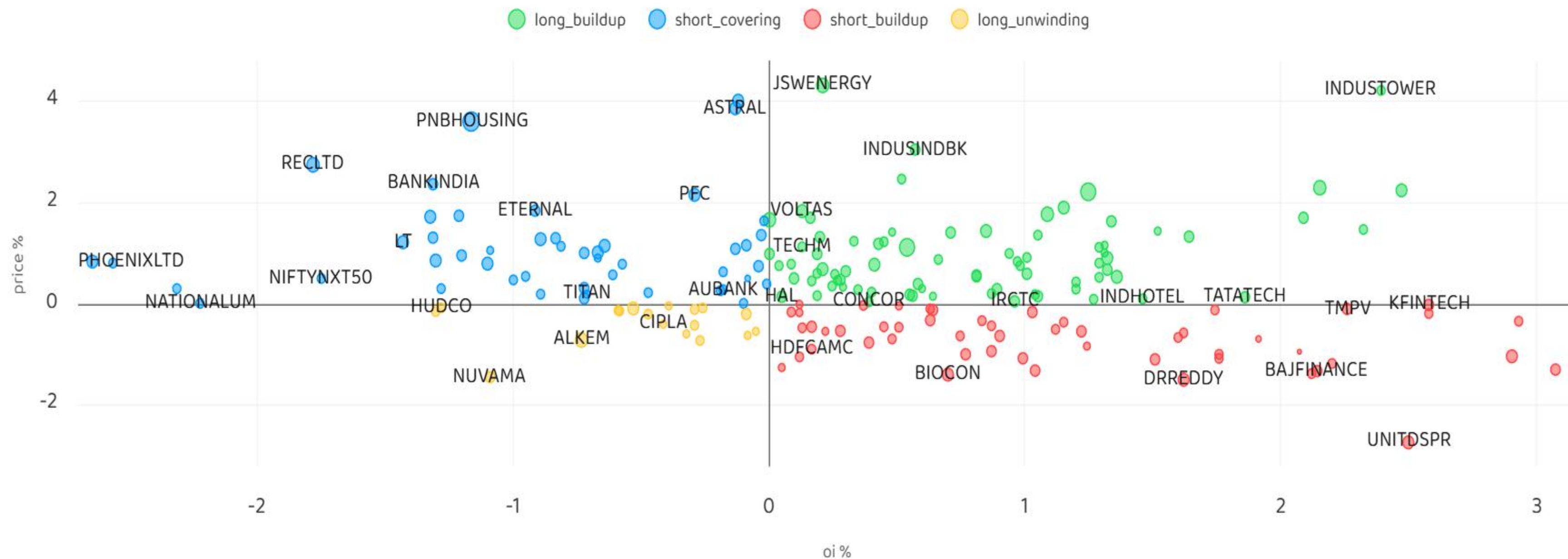
# Nifty Advance Decline & Ban update



Investment in securities market are subject to market risks, read all the related documents carefully before investing.

# Stocks : Derivatives Outlook

2-Jan-26



Investment in securities market are subject to market risks, read all the related documents carefully before investing.

# Stocks : Options on radar

Stock	Call Strike	Trade	Buying Range	SL	TGT	Logic
APLAPOLLO	1980 CE	Buy	50-51	46	63	Long build up
TVSMOTOR	3800 CE	Buy	96-97	85	120	Long build up
SHRIRAMFIN	1020 CE	Buy	32-33	29	40	Long build up

Stock	Put Strike	Trade	Buying Range	SL	TGT	Logic
KAYNES	3900 PE	Buy	134-135	115	175	Short build up
CIPLA	1500 PE	Buy	21-22	15	35	Long unwinding

# Quant Outlook

# Quant Intraday Sell Ideas

## What is this?

Based on technical indicators this strategy gives 2 stocks that have a high likelihood to fall during the day (from open to close). This is an intraday Sell strategy which can provide a good cushioning during a black swan event.

## Today's **Sell** Ideas:

Stock Names	Close Price	SL (1%)	TP (1%)
YESBANK <b>(Sell)</b>	21.5	21.7	21.3
IREDA <b>(Sell)</b>	139.4	140.8	138

## What are the rules?

- Stock names will be given at market open (9:15 am)
- Recommended time to entry: between 9:15 to 9:30 am.
- Entry: We short 2 stocks daily (intraday)
- Exit: we will exit at 3:15 as this is an intraday call
- SL: is placed at 1% of the open.
- Book profit: At 1% fall since open.
- In special situations the book profit might be delayed if the stock is in free fall.

**Siddhartha Khemka**  
Head – Retail Research

**Chandan Taparia, CMT, CFTe**  
Head – Derivatives & Technical Research

**Ruchit Jain**  
Head – Technical Research

Disclosures:

The following Disclosures are being made in compliance with the SEBI Research Analyst Regulations 2014 (herein after referred to as the Regulations).

Motilal Oswal Financial Services Ltd. (MOFSL) is a SEBI Registered Research Analyst having registration no. INH000000412 and BSE enlistment no. 5028. MOFSL, the Research Entity (RE) as defined in the Regulations, is engaged in the business of providing Stock broking services, Depository participant services & distribution of various financial products. MOFSL is a listed public company, the details in respect of which are available on [www.motilaloswal.com](http://www.motilaloswal.com). MOFSL is registered with the Securities & Exchange Board of India (SEBI) and is a registered Trading Member with National Stock Exchange of India Ltd. (NSE) and Bombay Stock Exchange Limited (BSE), Multi Commodity Exchange of India Limited (MCX) and National Commodity & Derivatives Exchange Limited (NCDEX) for its stock broking activities & is Depository participant with Central Depository Services Limited (CDSL) National Securities Depository Limited (NSDL), NERL, COMRIS and CCRL and is member of Association of Mutual Funds of India (AMFI) for distribution of financial products and Insurance Regulatory & Development Authority of India (IRDA) as Corporate Agent for insurance products and is a member of Association of Portfolio Managers in India (APMI) for distribution of PMS products. Details of associate entities of Motilal Oswal Financial Services Ltd. are available on the website at <http://onlinereports.motilaloswal.com/Dormant/documents/Associate%20Details.pdf>

Details of pending Enquiry Proceedings of Motilal Oswal Financial Services Limited are available on the website at <https://galaxy.motilaloswal.com/ResearchAnalyst/PublishViewLitigation.aspx>. As per Regulatory requirements, Research Audit Report is uploaded on [www.motilaloswal.com](http://www.motilaloswal.com) > MOFSL-Important Links > MOFSL Research Analyst Compliance Audit Report.

MOFSL, its associates, Research Analyst or their relatives may have any financial interest in the subject company. MOFSL and/or its associates and/or Research Analyst or their relatives may have actual beneficial ownership of 1% or more securities in the subject company at the end of the month immediately preceding the date of publication of the Research Report or date of the public appearance. MOFSL and its associate company(ies), their directors and Research Analyst and their relatives may have any other potential conflict of interests at the time of publication of the research report or at the time of public appearance, however the same shall have no bearing whatsoever on the specific recommendations made by the analyst(s), as the recommendations made by the analyst(s) are completely independent of the views of the associates of MOFSL even though there might exist an inherent conflict of interest in some of the stocks mentioned in the research report..

In the past 12 months, MOFSL or any of its associates may have:

- a) received any compensation/other benefits from the subject company of this report
- b) managed or co-managed public offering of securities from subject company of this research report,
- c) received compensation for investment banking or merchant banking or brokerage services from subject company of this research report,
- d) received compensation for products or services other than investment banking or merchant banking or brokerage services from the subject company of this research report.

- MOFSL and its associates have not received any compensation or other benefits from the subject company or third party in connection with the research report.
- Subject Company may have been a client of MOFSL or its associates during twelve months preceding the date of distribution of the research report.
- Research Analyst may have served as director/officer/employee in the subject company.
- MOFSL and research analyst may engage in market making activity for the subject company.

MOFSL and its associate company(ies), and Research Analyst and their relatives from time to time may have:

a) a long or short position in, act as principal in, and buy or sell the securities or derivatives thereof of companies mentioned herein.

(b) be engaged in any other transaction involving such securities and earn brokerage or other compensation or act as a market maker in the financial instruments of the company(ies) discussed herein or act as an advisor or lender/borrower to such company(ies) or may have any other potential conflict of interests with respect to any recommendation and other related information and opinions.; however the same shall have no bearing whatsoever on the specific recommendations made by the analyst(s), as the recommendations made by the analyst(s) are completely independent of the views of the associates of MOFSL even though there might exist an inherent conflict of interest in some of the stocks mentioned in the research report.

Above disclosures include beneficial holdings lying in demat account of MOFSL which are opened for proprietary investments only. While calculating beneficial holdings, It does not consider demat accounts which are opened in name of MOFSL for other purposes (i.e holding client securities, collaterals, error trades etc.). MOFSL also earns DP income from clients which are not considered in above disclosures.

To enhance transparency, MOFSL has incorporated a Disclosure of Interest Statement in this document. This should, however, not be treated as endorsement of the views expressed in the report. MOFSL and / or its affiliates do and seek to do business including investment banking with companies covered in its research reports. As a result, the recipients of this report should be aware that MOFSL may have a potential conflict of interest that may affect the objectivity of this report.

### Terms & Conditions:

This report has been prepared by MOFSL and is meant for sole use by the recipient and not for circulation. The report and information contained herein is strictly confidential and may not be altered in any way, transmitted to, copied or distributed, in part or in whole, to any other person or to the media or reproduced in any form, without prior written consent of MOFSL. The report is based on the facts, figures and information that are considered true, correct, reliable and accurate. The intent of this report is not recommendatory in nature. The information is obtained from publicly available media or other sources believed to be reliable. Such information has not been independently verified and no guaranty, representation of warranty, express or implied, is made as to its accuracy, completeness or correctness. All such information and opinions are subject to change without notice. The report is prepared solely for informational purpose and does not constitute an offer document or solicitation of offer to buy or sell or subscribe for securities or other financial instruments for the clients. Though disseminated to all the customers simultaneously, not all customers may receive this report at the same time. MOFSL will not treat recipients as customers by virtue of their receiving this report.

## Analyst Certification

The views expressed in this research report accurately reflect the personal views of the analyst(s) about the subject securities or issues, and no part of the compensation of the research analyst(s) was, is, or will be directly or indirectly related to the specific recommendations and views expressed by research analyst(s) in this report.

## Disclosure of Interest Statement

Analyst ownership of the stock	No
--------------------------------	----

A graph of daily closing prices of securities is available at [www.nseindia.com](http://www.nseindia.com), [www.bseindia.com](http://www.bseindia.com). Research Analyst views on Subject Company may vary based on Fundamental research and Technical Research. Proprietary trading desk of MOFSL or its associates maintains arm's length distance with Research Team as all the activities are segregated from MOFSL research activity and therefore it can have an independent view with regards to subject company for which Research Team have expressed their views.

Investment in securities market are subject to market risks, read all the related documents carefully before investing.



Regional Disclosures (outside India)

This report is not directed or intended for distribution to or use by any person or entity resident in a state, country or any jurisdiction, where such distribution, publication, availability or use would be contrary to law, regulation or which would subject MOFSL & its group companies to registration or licensing requirements within such jurisdictions.

For Hong Kong:

This report is distributed in Hong Kong by Motilal Oswal capital Markets (Hong Kong) Private Limited, a licensed corporation (CE AYY-301) licensed and regulated by the Hong Kong Securities and Futures Commission (SFC) pursuant to the Securities and Futures Ordinance (Chapter 571 of the Laws of Hong Kong) “SFO”. As per SEBI (Research Analyst Regulations) 2014 Motilal Oswal Financial Services Limited (SEBI Reg No. INH000000412) has an agreement with Motilal Oswal capital Markets (Hong Kong) Private Limited for distribution of research report in Hong Kong. This report is intended for distribution only to “Professional Investors” as defined in Part I of Schedule 1 to SFO. Any investment or investment activity to which this document relates is only available to professional investor and will be engaged only with professional investors.” Nothing here is an offer or solicitation of these securities, products and services in any jurisdiction where their offer or sale is not qualified or exempt from registration. The Indian Analyst(s) who compile this report is/are not located in Hong Kong & are not conducting Research Analysis in Hong Kong.

For U.S.

MOTILAL Oswal Financial Services Limited (MOFSL) is not a registered broker - dealer under the U.S. Securities Exchange Act of 1934, as amended (the "1934 act") and under applicable state laws in the United States. In addition MOFSL is not a registered investment adviser under the U.S. Investment Advisers Act of 1940, as amended (the "Advisers Act" and together with the 1934 Act, the "Acts), and under applicable state laws in the United States. Accordingly, in the absence of specific exemption under the Acts, any brokerage and investment services provided by MOFSL, including the products and services described herein are not available to or intended for U.S. persons. This report is intended for distribution only to "Major Institutional Investors" as defined by Rule 15a-6(b)(4) of the Exchange Act and interpretations thereof by SEC (henceforth referred to as "major institutional investors"). This document must not be acted on or relied on by persons who are not major institutional investors. Any investment or investment activity to which this document relates is only available to major institutional investors and will be engaged in only with major institutional investors. In reliance on the exemption from registration provided by Rule 15a-6 of the U.S. Securities Exchange Act of 1934, as amended (the "Exchange Act") and interpretations thereof by the U.S. Securities and Exchange Commission ("SEC") in order to conduct business with Institutional Investors based in the U.S., MOFSL has entered into a chaperoning agreement with a U.S. registered broker-dealer, Motilal Oswal Securities International Private Limited. ("MOSIPL"). Any business interaction pursuant to this report will have to be executed within the provisions of this chaperoning agreement.

The Research Analysts contributing to the report may not be registered /qualified as research analyst with FINRA. Such research analyst may not be associated persons of the U.S. registered broker-dealer, MOSIPL, and therefore, may not be subject to NASD rule 2711 and NYSE Rule 472 restrictions on communication with a subject company, public appearances and trading securities held by a research analyst account.

For Singapore

In Singapore, this report is being distributed by Motilal Oswal Capital Markets (Singapore) Pte. Ltd. (“MOCMSPL”) (UEN 201129401Z), which is a holder of a capital markets services license and an exempt financial adviser in Singapore.This report is distributed solely to persons who (a) qualify as “institutional investors” as defined in section 4A(1)(c) of the Securities and Futures Act of Singapore (“SFA”) or (b) are considered "accredited investors" as defined in section 2(1) of the Financial Advisers Regulations of Singapore read with section 4A(1)(a) of the SFA. Accordingly, if a recipient is neither an “institutional investor” nor an “accredited investor”, they must immediately discontinue any use of this Report and inform MOCMSPL .

In respect of any matter arising from or in connection with the research you could contact the following representatives of MOCMSPL. In case of grievances for any of the services rendered by MOCMSPL write to grievances@motilaloswal.com.

Nainesh Rajani

Email: nainesh.rajani@motilaloswal.com

Contact: (+65) 8328 0276

Disclaimer:

This report is intended for distribution to Retail Investors.

The report and information contained herein is strictly confidential and meant solely for the selected recipient and may not be altered in any way, transmitted to, copied or distributed, in part or in whole, to any other person or to the media or reproduced in any form, without prior written consent. This report and information herein is solely for informational purpose and may not be used or considered as an offer document or solicitation of offer to buy or sell or subscribe for securities or other financial instruments. Nothing in this report constitutes investment, legal, accounting and tax advice or a representation that any investment or strategy is suitable or appropriate to your specific circumstances. The securities discussed and opinions expressed in this report may not be suitable for all investors, who must make their own investment decisions, based on their own investment objectives, financial positions and needs of specific recipient. This may not be taken in substitution for the exercise of independent judgment by any recipient. Each recipient of this document should make such investigations as it deems necessary to arrive at an independent evaluation of an investment in the securities of companies referred to in this document (including the merits and risks involved), and should consult its own advisors to determine the merits and risks of such an investment. The investment discussed or views expressed may not be suitable for all investors. Certain transactions -including those involving futures, options, another derivative products as well as non-investment grade securities - involve substantial risk and are not suitable for all investors. No representation or warranty, express or implied, is made as to the accuracy, completeness or fairness of the information and opinions contained in this document. The Disclosures of Interest Statement incorporated in this document is provided solely to enhance the transparency and should not be treated as endorsement of the views expressed in the report. This information is subject to change without any prior notice. The Company reserves the right to make modifications and alternations to this statement as may be required from time to time without any prior approval. MOFSL, its associates, their directors and the employees may from time to time, effect or have effected an own account transaction in, or deal as principal or agent in or for the securities mentioned in this document. They may perform or seek to perform investment banking or other services for, or solicit investment banking or other business from, any company referred to in this report. Each of these entities functions as a separate, distinct and independent of each other. The recipient should take this into account before interpreting the document. This report has been prepared on the basis of information that is already available in publicly accessible media or developed through analysis of MOFSL. The views expressed are those of the analyst, and the Company may or may not subscribe to all the views expressed therein. This document is being supplied to you solely for your information and may not be reproduced, redistributed or passed on, directly or indirectly, to any other person or published, copied, in whole or in part, for any purpose. This report is not directed or intended for distribution to, or use by, any person or entity who is a citizen or resident of or located in any locality, state, country or other jurisdiction, where such distribution, publication, availability or use would be contrary to law, regulation or which would subject MOFSL to any registration or licensing requirement within such jurisdiction. The securities described herein may or may not be eligible for sale in all jurisdictions or to certain category of investors. Persons in whose possession this document may come are required to inform themselves of and to observe such restriction. Neither the Firm, not its directors, employees, agents or representatives shall be liable for any damages whether direct or indirect, incidental, special or consequential including lost revenue or lost profits that may arise from or in connection with the use of the information. The person accessing this information specifically agrees to exempt MOFSL or any of its affiliates or employees from, any and all responsibility/liability arising from such misuse and agrees not to hold MOFSL or any of its affiliates or employees responsible for any such misuse and further agrees to hold MOFSL or any of its affiliates or employees free and harmless from all losses, costs, damages, expenses that may be` suffered by the person accessing this information due to any errors and delays.

This report is meant for the clients of Motilal Oswal only.

Investment in securities market are subject to market risks. Read all the related documents carefully before investing.

Registration granted by SEBI, enlistment as RA with Exchange and certification from NISM in no way guarantee performance of the intermediary or provide any assurance of returns to investors

Registered Office Address: Motilal Oswal Tower, Rahimtullah Sayani Road, Opposite Parel ST Depot, Prabhadevi, Mumbai-400025; Tel No.: 022 - 71934200 / 71934263; www.motilaloswal.com. Correspondence Address: Palm Spring Centre, 2nd Floor, Palm Court Complex, New Link Road, Malad (West), Mumbai- 400 064. Tel No: 022 71881000. Details of Compliance Officer: Neeraj Agarwal, Email Id: na@motilaloswal.com, Contact No.:022-40548085.

Grievance Redressal Cell:

Contact Person	Contact No.	Email ID
Ms. Hemangi Date	022 40548000 / 022 67490600	query@motilaloswal.com
Ms. Kumud Upadhyay	022 40548082	servicehead@motilaloswal.com
Mr. Ajay Menon	022 40548083	am@motilaloswal.com
Mr. Neeraj Agarwal	022 40548085	na@motilaloswal.com
Mr. Siddhartha Khemka	022 50362452	po.research@motilaloswal.com

Registration details of group entities.: Motilal Oswal Financial Services Ltd. (MOFSL): INZ000158836 (BSE/NSE/MCX/NCDEX); CDSL and NSDL: IN-DP-16-2015; Research Analyst: INH000000412, BSE enlistment no. 5028, AMFI registered Mutual Fund Distributor and SIF Distributor: ARN .: 146822. IRDA Corporate Agent – CA0579, APMI: APRN00233. Motilal Oswal Financial Services Ltd. is a distributor of Mutual Funds, PMS, Fixed Deposit, Insurance, Bond, NCDs and IPO products.

Customer having any query/feedback/ clarification may write to query@motilaloswal.com. In case of grievances for any of the services rendered by Motilal Oswal Financial Services Limited (MOFSL) write to grievances@motilaloswal.com, for DP to dpgrievances@motilaloswal.com.

Investment in securities market are subject to market risks, read all the related documents carefully before investing.