



Solid Research
Solid Relationships

Fundamental Outlook

Global Market Setup

- The US markets ended nearly unchanged on Friday, with few catalysts to fuel much conviction one way or the other.
- Dow Jones fell **-0.04%**, S&P 500 ended **-0.03%** lower, and Nasdaq closed **-0.1% down**.
- European markets ended on a mixed note.
- Dow futures is currently trading **higher with marginal gains of 0.1% (~60 points higher)**
- Asian indices are mostly trading **higher with gains of ~0.5%**
- Global Cues: Muted

Indian Market Setup

- Indian equities ended lower, as profit-booking emerged in select blue-chip stocks.
- Nifty50 **fell by 100 points to close at 26,042 (-0.4%)**
- Nifty Midcap 100 and Smallcap 100 **declined by -0.2% and -0.1% respectively.**
- FII: **-317cr**; DII: **+₹1,772cr**
- GIFT Nifty is currently trading **+0.1% higher (20 points up)**

Domestic Cues: **Marginal Positive**

Stocks in News

PNB: The bank has reported a borrowal fraud of Rs 2,434 crore to the RBI against the erstwhile promoters of SREI Equipment Finance and SREI Infrastructure Finance. These companies were successfully resolved under the Corporate Insolvency Resolution Process (CIRP) by the NCLT.

View: Negative

Indigo: India's largest airline saw a dip in domestic market share in November following major operational disruptions earlier in the month. Data from the Directorate General of Civil Aviation (DGCA), accessed by PTI, showed IndiGo's market share fell to 63.6% in November from 65.6% in October.

View: Negative

Vodafone: Vodafone Idea is positioning 2026 as a year of accelerated network expansion, with an increased focus on 5G rollout alongside continued investment in its 4G network. CEO Abhijit Kishore said the telco has added a significant number of towers nationwide to improve coverage and capacity ahead of scaling next-generation services.

View: Positive

Titan: Titan is set to enter the fast-growing lab-grown diamond (LGD) jewellery space. The company announced the launch of a new brand, "beYon – from the House of Titan", with its first exclusive retail store opening in Mumbai on December 29. The segment is currently dominated by VC- and PE-backed startups.

View: Positive

Fundamental Actionable Idea

Coforge

CMP INR1673, TP INR2500, 49% Upside, Buy, MTF Stock

- Coforge announced the acquisition of Encora, a US-based engineering and AI-led services firm with revenue of ~USD500m, adding ~26% to Coforge's FY26E revenue base. Encora has ~9,300 employees, implying revenue per employee of ~USD74k vs. ~USD69k for Coforge, and operates at higher margins than Coforge.
- The vertical mix, primarily Hi-Tech and Healthcare, is a positive, especially given Coforge's strategic intent to scale these segments. Management has indicated that the transaction could be EPS accretive from day one.
- Earlier acquisitions were largely client-led, whereas this transaction is more capability- and leadership-driven, making talent retention and execution discipline more critical given the larger scale of the deal.
- We believe Coforge's strong executable order book and resilient client spending across verticals bode well for its organic business. This acquisition expands Coforge's presence in the Hi-Tech and Healthcare verticals. We continue to view Coforge as a structurally strong mid-tier player well-placed to benefit from vendor consolidation/cost-takeout deals and digital transformation.

View: Buy

Fundamental Actionable Idea

Vedanta

CMP INR 601, MTF Stock

- The company has been declared the successful bidder for the Depo Graphite–Vanadium block under the critical mineral auctions.
- The receipt of the successful bidder status for the Depo Graphite–Vanadium block will further strengthen the company's critical minerals portfolio.
- In addition, Capex plans are progressing well and will likely lead to further cost savings.
- VEDL expects a stronger 2H operational run rate across aluminum, zinc, power, and steel segments, which will drive higher consolidated earnings. Management targets to maintain strong growth in earnings, led by the upcoming capacity, which will produce higher VAP products.
- VEDL remains firm on its deleveraging plans, and going forward, higher cash flows will support both its expansion plans and deleveraging efforts.

View: Positive

Velocity Idea: Astra Microwave Products

RECO: BUY, CMP: ₹ 986, SL: ₹ 930 (6%), TP: ₹ 1100 (12%)

29-Dec-25

Key Triggers:

- Astra Microwave Products (AMPL) designs and manufactures RF and microwave modules and systems in India, transitioning into a full system solutions provider while targeting opportunities in AESA radars, Uttam radar, naval repeat orders, meteorology, and counter-drone systems.
- AMPL will partner with BEL to co-develop indigenous electronic warfare, radar, and satellite systems, contributing advanced RF and microwave technologies to strengthen India's defence and aerospace capabilities under the Make-in-India initiative.
- We expect 18% revenue CAGR in FY25–28, margins nearing 26%, and PAT CAGR of 23%. We view AMPL as a compelling long-term opportunity in defense electronics, with revenue growth expected to accelerate during FY27–30 as larger orders are awarded by the MoD and defense PSUs.

Technical View:

- Stock has retested breakout on weekly chart and inching higher.
- The RSI momentum indicator has given a bullish crossover to support the up move.

Focus Investment Ideas

All Stocks Available in MTF

Duration : 1 Year Horizon

Stock Name	Rating	CMP (Rs)	Target (Rs)	Upside (%)
HCL Tech	Buy	1,661	2,150	29%
Bharat Electronics	Buy	398	500	26%
ICICI Bank	Buy	1,351	1,700	26%
TVS Motors	Buy	3,630	4,159	15%
KEI Industries	Buy	4,356	4,960	14%

Technical Outlook

Nifty Technical Outlook

NIFTY (CMP : 26042) Nifty immediate support is at 25900 then 25800 zones while resistance at 26250 then 26325 zones. Now it has to hold above 26000 zones to reclaim its recent highs of 26250 then 26325 zones while supports can be seen at 25900 then 25800 zones.

1-Nifty50 - 26/12/25

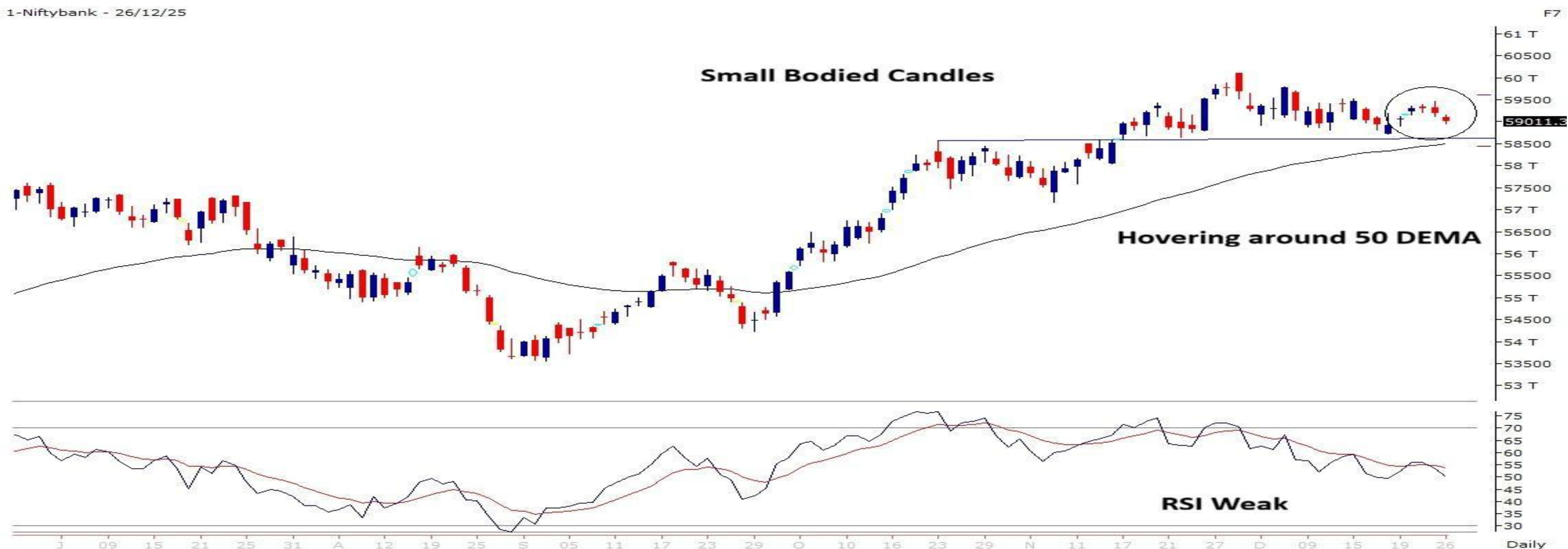


Investment in securities market are subject to market risks, read all the related documents carefully before investing.

Bank Nifty Technical Outlook

BANK NIFTY (CMP : 59011) Bank Nifty support is at 58750 then 58500 zones while resistance at 59250 then 59500 zones. Now it has to cross and hold above 59000 zones for a bounce towards 59250 then 59500 zones while on the downside support is seen at 58750 then 58500 levels.

1-Niftybank - 26/12/25



Investment in securities market are subject to market risks, read all the related documents carefully before investing.

Sensex Technical Outlook

Sensex (CMP : 85041) Sensex support is at 84700 then 84500 zones while resistance at 85200 then 85500 zones. Now till it holds below 85200 zones weakness could be seen towards 84700 then 84500 zones while hurdles have shifted lower to 85200 then 85500 zones.

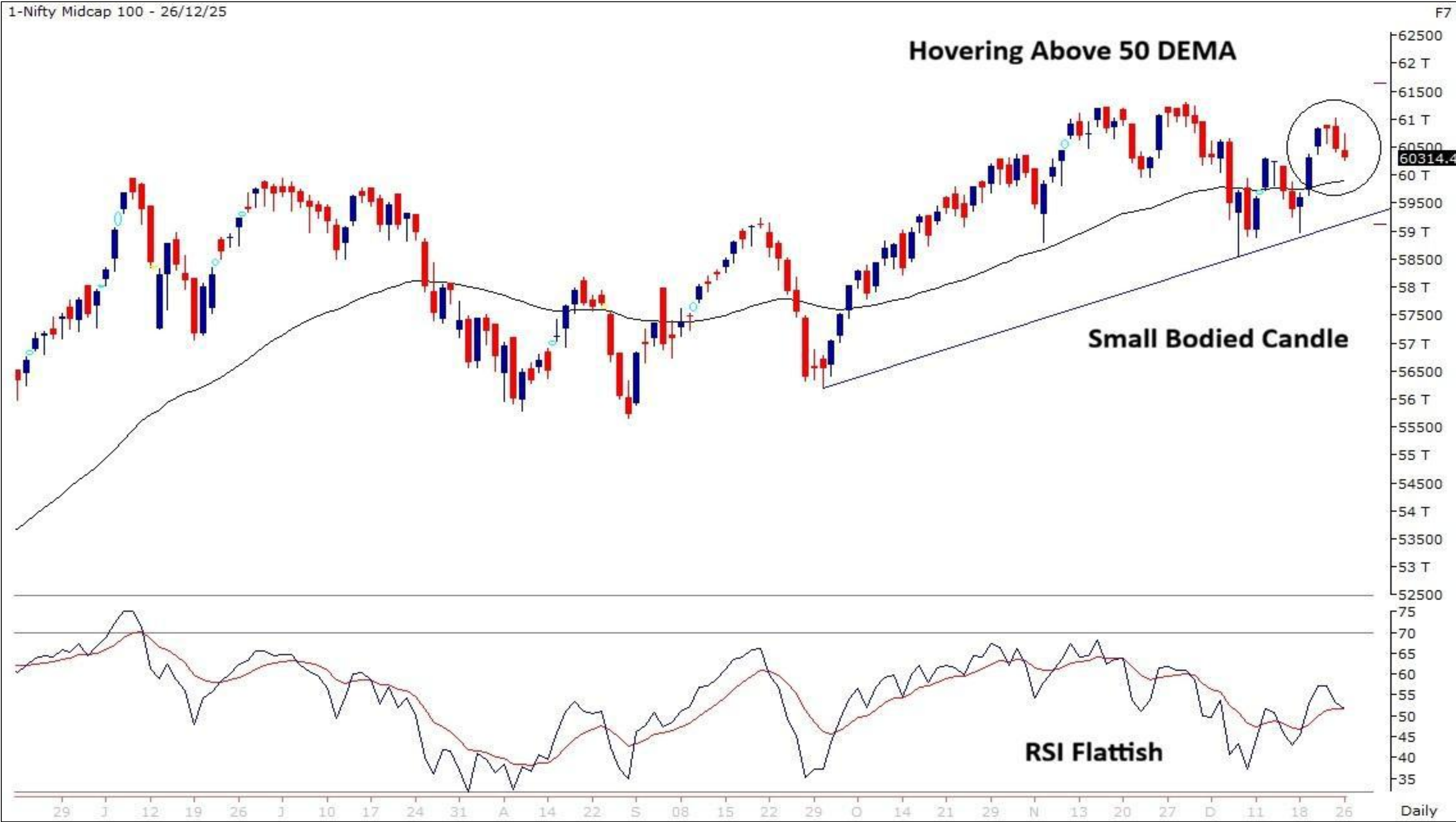
1-S&P BSESENSX - 26/12/25



Investment in securities market are subject to market risks, read all the related documents carefully before investing.

Midcap100 Index Technical Outlook

29-Dec-25



- Formed a bearish candle and RSI indicator showing weakness.

Smallcap250 Index Technical Outlook

29-Dec-25



Nifty SmallCap250 Stats

Advance
90

Decline
160

- Small Bodied candles and hovering around 50 DEMA.

Sectoral Performance

29-Dec-25

	Closing	% Change				
Indices	26-Dec	1-day	2-days	3-days	5-days	
NIFTY 50	26042	<div><div></div></div> -0.38%	<div><div></div></div> -0.52%	<div><div></div></div> -0.50%	<div><div></div></div> 0.88%	
NIFTY BANK	59011	<div><div></div></div> -0.29%	<div><div></div></div> -0.49%	<div><div></div></div> -0.49%	<div><div></div></div> 0.17%	
NIFTY MIDCAP 100	60314	<div><div></div></div> -0.23%	<div><div></div></div> -0.82%	<div><div></div></div> -0.82%	<div><div></div></div> 1.21%	
NIFTY SMALLCAP 250	16614	<div><div></div></div> -0.18%	<div><div></div></div> -0.13%	<div><div></div></div> 0.29%	<div><div></div></div> 2.61%	
NIFTY FINANCIAL SERVICES	27431	<div><div></div></div> -0.49%	<div><div></div></div> -0.56%	<div><div></div></div> -0.18%	<div><div></div></div> 0.60%	
NIFTY PRIVATE BANK	28404	<div><div></div></div> -0.20%	<div><div></div></div> -0.34%	<div><div></div></div> -0.37%	<div><div></div></div> 0.25%	
NIFTY PSU BANK	8287	<div><div></div></div> -0.27%	<div><div></div></div> -0.72%	<div><div></div></div> -1.06%	<div><div></div></div> -0.46%	
NIFTY IT	38572	<div><div></div></div> -1.03%	<div><div></div></div> -1.54%	<div><div></div></div> -2.32%	<div><div></div></div> -0.16%	
NIFTY FMCG	55132	<div><div></div></div> 0.03%	<div><div></div></div> -0.39%	<div><div></div></div> 0.13%	<div><div></div></div> 1.07%	
NIFTY OIL & GAS	11958	<div><div></div></div> -0.01%	<div><div></div></div> -0.77%	<div><div></div></div> -0.75%	<div><div></div></div> 0.95%	
NIFTY PHARMA	22685	<div><div></div></div> -0.32%	<div><div></div></div> -0.83%	<div><div></div></div> -1.06%	<div><div></div></div> 0.56%	
NIFTY AUTO	27740	<div><div></div></div> -0.52%	<div><div></div></div> -0.55%	<div><div></div></div> -0.52%	<div><div></div></div> 1.53%	
NIFTY METAL	10806	<div><div></div></div> 0.59%	<div><div></div></div> 0.74%	<div><div></div></div> 1.29%	<div><div></div></div> 2.76%	
NIFTY REALTY	883	<div><div></div></div> -0.23%	<div><div></div></div> -0.06%	<div><div></div></div> -0.23%	<div><div></div></div> 1.47%	
NIFTY INDIA DEFENCE	7774	<div><div></div></div> -0.19%	<div><div></div></div> 0.13%	<div><div></div></div> 0.25%	<div><div></div></div> 5.43%	

- Most of the Sectors closed negative while relative strength was seen in nifty Metals.

NBCC

(Mcap ₹ 32,956 Cr.)

F&O Stock, MTF stock

- Falling Supply trendline breakout on daily chart.
- Strong bodied bullish candle.
- High volumes on up moves.
- Formed a base around 50 DEMA.
- RSI momentum indicator rising.
- We recommend to buy the stock at CMP ₹122 with a SL of ₹117 and a TGT of ₹130.

RECOs	CMP	SL	TARGET	DURATION
BUY	122	117	130	1 Week



NMDC

(CMP: 82.61, Mcap ₹ 72,629 Cr.)

F&O Stock, MTF stock

- Consolidation breakout on daily chart.
- Surge in traded volumes.
- RSI indicator rising.
- Immediate support at 79.50.



CONCOR

(CMP: 520, Mcap ₹ 39,627 Cr.)

F&O Stock, MTF stock

- Bounce up from support zones.
- Close above 50 DEMA.
- Rising volumes.
- RSI indicator positively placed.
- Immediate support at 490.



Technical Chart Pattern for the Day

VBL (Mcap ₹ 1,63,299 Cr.) (CMP : ₹ 483) F&O Stock, MTF stock

29-Dec-25



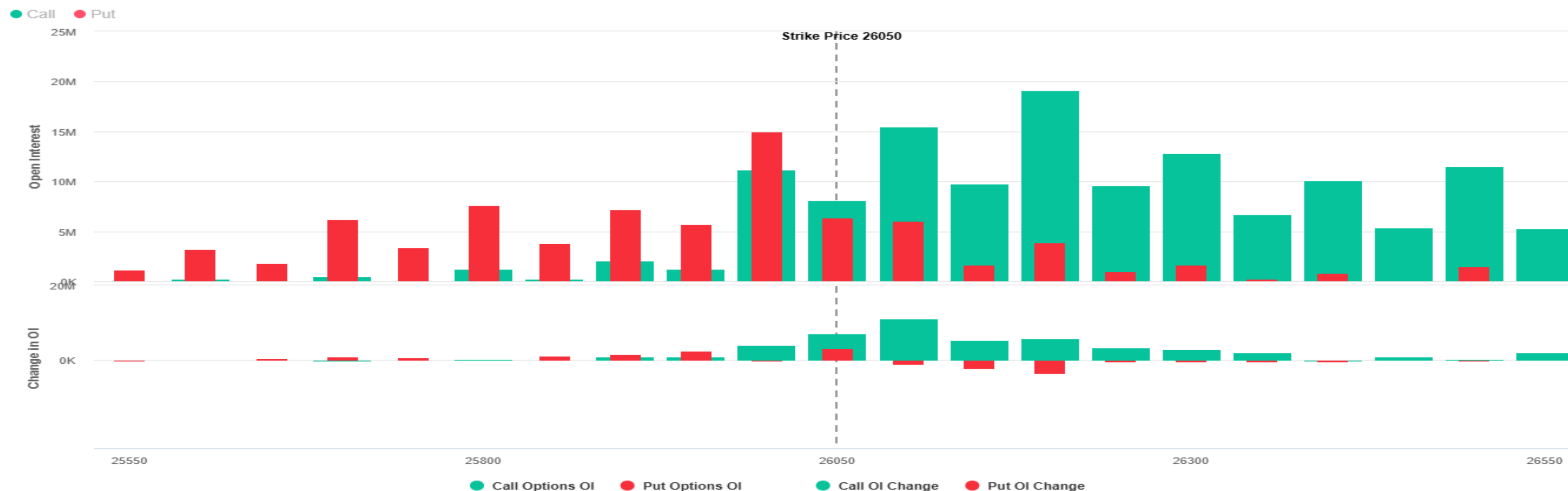
- “Symmetrical Triangle” Pattern formation, Breakout above 490

Derivative Outlook

Nifty : Option Data

29-Dec-25

- Maximum Call OI is at 26100 then 26200 strike while Maximum Put OI is at 26000 then 25800 strike.
- Call writing is seen at 26100 then 26200 strike while Put writing is seen at 26060 then 25950 strike.
- Option data suggests a broader trading range in between 25600 to 26400 zones while an immediate range between 25800 to 26200 levels.




Investment in securities market are subject to market risks, read all the related documents carefully before investing.

Option - Buying side strategy

Index	Single Leg Buying	Multi Leg Strategy
Nifty (Monthly)	26050 CE if it holds above 26000	Bull call Spread (Buy 26100 CE and Sell 26200 CE) at net premium cost of 20-25 points
Sensex (Weekly)	85400 CE if it cross and hold above 85000	Bull call Spread (Buy 85400 CE and Sell 85600 CE) at net premium cost of 50-60 points
Bank Nifty (Monthly)	59000 CE if it holds above 59000	Bull call Spread (Buy 59100 CE and Sell 59400 CE) at net premium cost of 90-110 points

Option - Selling side strategy

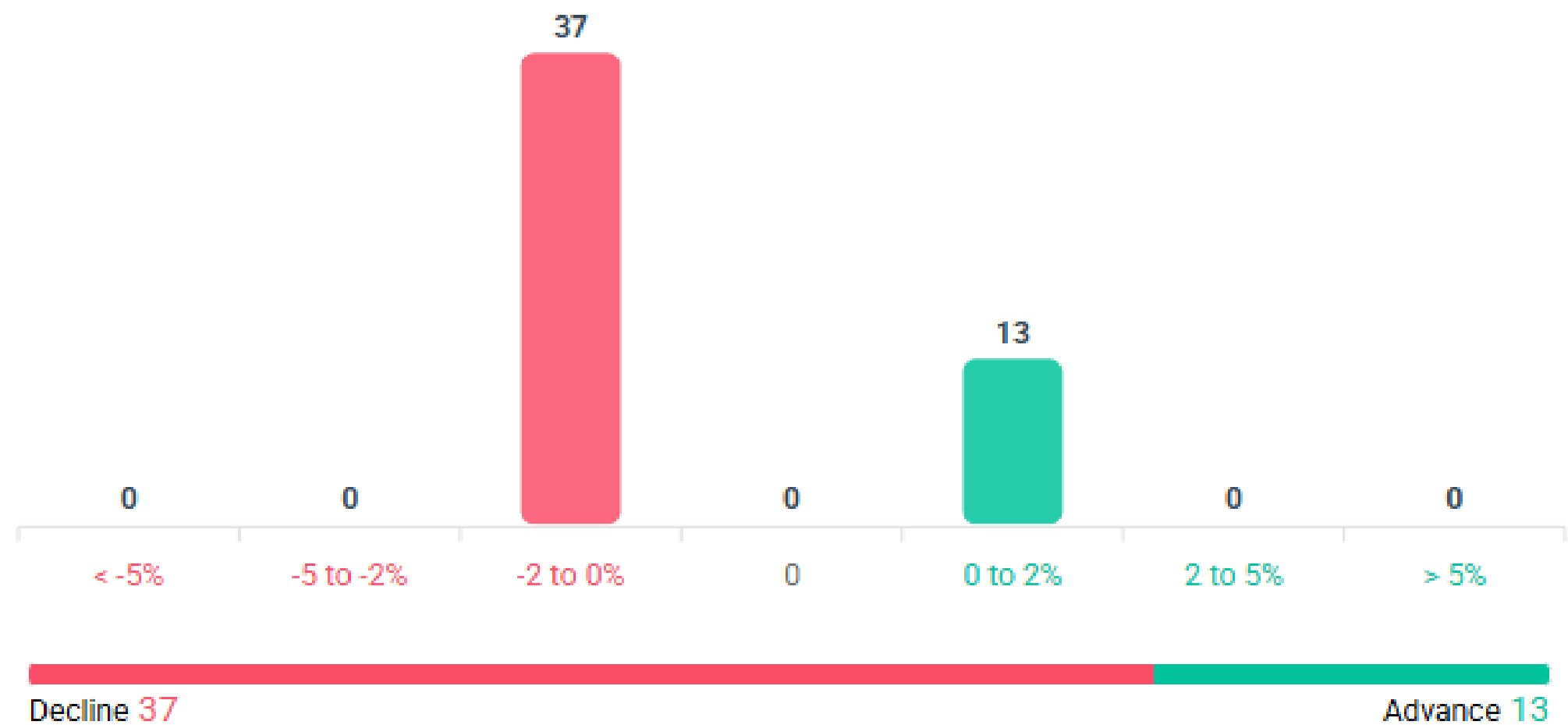
Index	Writing
Nifty (Monthly)	25800 PE & 26300 CE
Sensex (Weekly)	84000 PE & 86400 CE
Bank Nifty (Monthly)	58600 PE & 59500 CE

Weekly Option Range for Option Writers based on Different Confidence Band								
Date		29-Dec-25	Weekly Expiry		30-Dec-25	Days to weekly expiry		2
								
Nifty		26042	India VIX		9.2			
Confidence Band	Probability	% Away From Spot	Range				Total Premium (Put + Call)	Types of Trades
			Put	Premium	Call	Premium		
1.00	68%	± 0.5%	25900	15	26200	21	37	Aggressive
1.50	87%	± 0.7%	25850	10	26250	14	24	Neutral
2.00	95%	± 0.9%	25800	6	26300	9	15	Most Conservative
Date		29-Dec-25	Monthly Expiry		30-Dec-25	Days to weekly expiry		2
Bank Nifty		59011						
Confidence Band	Probability	% Away From Spot	Range				Total Premium (Put + Call)	Types of Trades
			Put	Premium	Call	Premium		
1.00	68%	± 0.5%	58700	50	59300	74	124	Aggressive
1.25	79%	± 0.7%	58600	35	59400	54	90	Less Aggressive
1.50	87%	± 0.9%	58500	25	59500	39	65	Neutral
1.75	92%	± 1.0%	58400	19	59600	29	48	Conservative
2.00	95%	± 1.2%	58300	12	59700	21	33	Most Conservative
Investments in securities markets are subject to market risks. Please read all related documents carefully.								

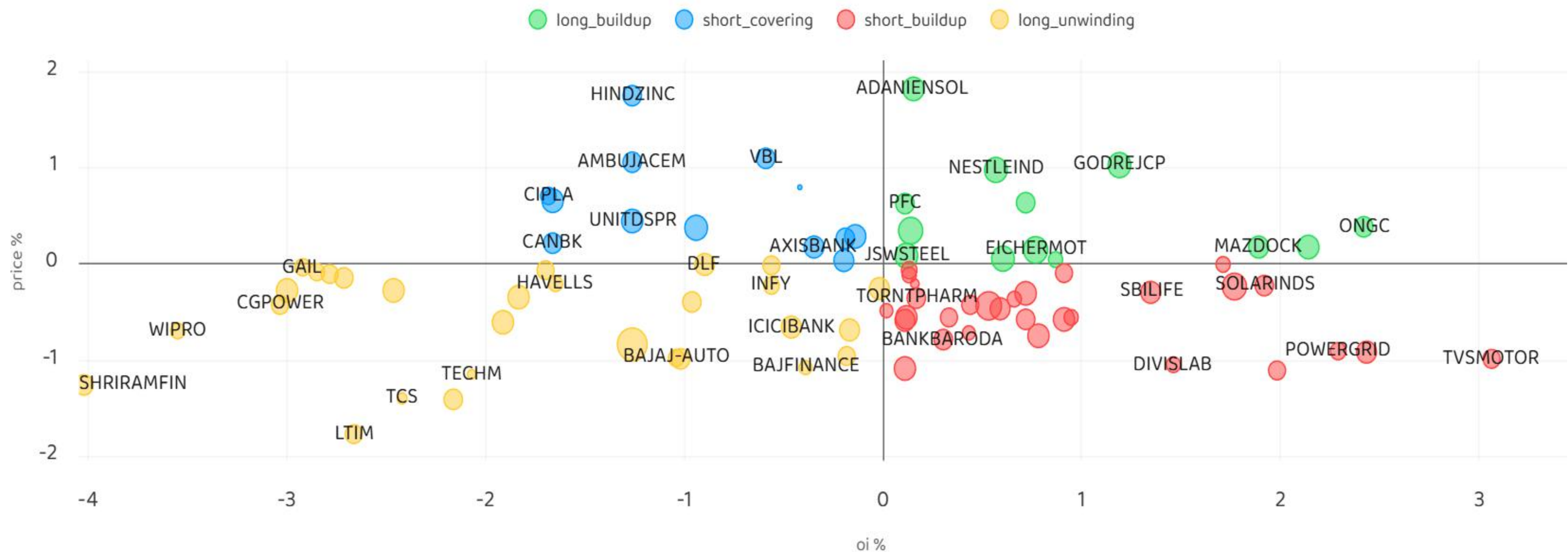
Nifty Advance Decline & Ban update

Stocks in Ban: **SAMMAANCAP**

All FNO **Nifty 50** Bank Nifty Fin Nifty



Stocks : Derivatives Outlook



Investment in securities market are subject to market risks, read all the related documents carefully before investing.

Stocks : Options on radar

Stock	Call Strike (27 Jan Expiry)	Trade	Buying Range	SL	TGT	Logic
TITAN	4000 CE	Buy	105-106	90	135	Long build up
MCX	11100 CE	Buy	406-407	385	450	Long build up
HINDALCO	880 CE	Buy	24-25	21	31	Short covering

Stock	Put Strike (27 Jan Expiry)	Trade	Buying Range	SL	TGT	Logic
ASIANPAINTS	2740 PE	Buy	47-48	39	65	Long unwinding
KAYNES	4000 PE	Buy	173-174	150	220	Long unwinding

Quant Outlook

Quant Intraday Sell Ideas

What is this?

Based on technical indicators this strategy gives 2 stocks that have a high likelihood to fall during the day (from open to close). This is an intraday Sell strategy which can provide a good cushioning during a black swan event.

Today's **Sell** Ideas:

Stock Names	Close Price	SL (1%)	TP (1%)
JIOFIN (Sell)	296.95	299.9	293.9
TATAPOWER (Sell)	379.5	383.3	375.7

What are the rules?

- Stock names will be given at market open (9:15 am)
- Recommended time to entry: between 9:15 to 9:30 am.
- Entry: We short 2 stocks daily (intraday)
- Exit: we will exit at 3:15 as this is an intraday call
- SL: is placed at 1% of the open.
- Book profit: At 1% fall since open.
- In special situations the book profit might be delayed if the stock is in free fall.

Siddhartha Khemka
Head – Retail Research

Chandan Taparia, CMT, CFTE
Head – Derivatives & Technical Research

Neil Jha
Head - Quant

Disclosures:

The following Disclosures are being made in compliance with the SEBI Research Analyst Regulations 2014 (herein after referred to as the Regulations).

Motilal Oswal Financial Services Ltd. (MOFSL) is a SEBI Registered Research Analyst having registration no. INH000000412 and BSE enlistment no. 5028. MOFSL, the Research Entity (RE) as defined in the Regulations, is engaged in the business of providing Stock broking services, Depository participant services & distribution of various financial products. MOFSL is a listed public company, the details in respect of which are available on www.motilaloswal.com. MOFSL is registered with the Securities & Exchange Board of India (SEBI) and is a registered Trading Member with National Stock Exchange of India Ltd. (NSE) and Bombay Stock Exchange Limited (BSE), Multi Commodity Exchange of India Limited (MCX) and National Commodity & Derivatives Exchange Limited (NCDEX) for its stock broking activities & is Depository participant with Central Depository Services Limited (CDSL) National Securities Depository Limited (NSDL), NERL, COMRIS and CCRL and is member of Association of Mutual Funds of India (AMFI) for distribution of financial products and Insurance Regulatory & Development Authority of India (IRDA) as Corporate Agent for insurance products and is a member of Association of Portfolio Managers in India (APMI) for distribution of PMS products. Details of associate entities of Motilal Oswal Financial Services Ltd. are available on the website at <http://onlinereports.motilaloswal.com/Dormant/documents/Associate%20Details.pdf>

Details of pending Enquiry Proceedings of Motilal Oswal Financial Services Limited are available on the website at <https://galaxy.motilaloswal.com/ResearchAnalyst/PublishViewLitigation.aspx>. As per Regulatory requirements, Research Audit Report is uploaded on www.motilaloswal.com > MOFSL-Important Links > MOFSL Research Analyst Compliance Audit Report.

MOFSL, its associates, Research Analyst or their relatives may have any financial interest in the subject company. MOFSL and/or its associates and/or Research Analyst or their relatives may have actual beneficial ownership of 1% or more securities in the subject company at the end of the month immediately preceding the date of publication of the Research Report or date of the public appearance. MOFSL and its associate company(ies), their directors and Research Analyst and their relatives may have any other potential conflict of interests at the time of publication of the research report or at the time of public appearance, however the same shall have no bearing whatsoever on the specific recommendations made by the analyst(s), as the recommendations made by the analyst(s) are completely independent of the views of the associates of MOFSL even though there might exist an inherent conflict of interest in some of the stocks mentioned in the research report..

In the past 12 months, MOFSL or any of its associates may have:

- a) received any compensation/other benefits from the subject company of this report
- b) managed or co-managed public offering of securities from subject company of this research report,
- c) received compensation for investment banking or merchant banking or brokerage services from subject company of this research report,
- d) received compensation for products or services other than investment banking or merchant banking or brokerage services from the subject company of this research report.

- MOFSL and its associates have not received any compensation or other benefits from the subject company or third party in connection with the research report.
- Subject Company may have been a client of MOFSL or its associates during twelve months preceding the date of distribution of the research report.
- Research Analyst may have served as director/officer/employee in the subject company.
- MOFSL and research analyst may engage in market making activity for the subject company.

MOFSL and its associate company(ies), and Research Analyst and their relatives from time to time may have:

a) a long or short position in, act as principal in, and buy or sell the securities or derivatives thereof of companies mentioned herein.

(b) be engaged in any other transaction involving such securities and earn brokerage or other compensation or act as a market maker in the financial instruments of the company(ies) discussed herein or act as an advisor or lender/borrower to such company(ies) or may have any other potential conflict of interests with respect to any recommendation and other related information and opinions.; however the same shall have no bearing whatsoever on the specific recommendations made by the analyst(s), as the recommendations made by the analyst(s) are completely independent of the views of the associates of MOFSL even though there might exist an inherent conflict of interest in some of the stocks mentioned in the research report.

Above disclosures include beneficial holdings lying in demat account of MOFSL which are opened for proprietary investments only. While calculating beneficial holdings, It does not consider demat accounts which are opened in name of MOFSL for other purposes (i.e holding client securities, collaterals, error trades etc.). MOFSL also earns DP income from clients which are not considered in above disclosures.

To enhance transparency, MOFSL has incorporated a Disclosure of Interest Statement in this document. This should, however, not be treated as endorsement of the views expressed in the report. MOFSL and / or its affiliates do and seek to do business including investment banking with companies covered in its research reports. As a result, the recipients of this report should be aware that MOFSL may have a potential conflict of interest that may affect the objectivity of this report.

Terms & Conditions:

This report has been prepared by MOFSL and is meant for sole use by the recipient and not for circulation. The report and information contained herein is strictly confidential and may not be altered in any way, transmitted to, copied or distributed, in part or in whole, to any other person or to the media or reproduced in any form, without prior written consent of MOFSL. The report is based on the facts, figures and information that are considered true, correct, reliable and accurate. The intent of this report is not recommendatory in nature. The information is obtained from publicly available media or other sources believed to be reliable. Such information has not been independently verified and no guaranty, representation of warranty, express or implied, is made as to its accuracy, completeness or correctness. All such information and opinions are subject to change without notice. The report is prepared solely for informational purpose and does not constitute an offer document or solicitation of offer to buy or sell or subscribe for securities or other financial instruments for the clients. Though disseminated to all the customers simultaneously, not all customers may receive this report at the same time. MOFSL will not treat recipients as customers by virtue of their receiving this report.

Analyst Certification

The views expressed in this research report accurately reflect the personal views of the analyst(s) about the subject securities or issues, and no part of the compensation of the research analyst(s) was, is, or will be directly or indirectly related to the specific recommendations and views expressed by research analyst(s) in this report.

Disclosure of Interest Statement

Analyst ownership of the stock	No
--------------------------------	----

A graph of daily closing prices of securities is available at www.nseindia.com, www.bseindia.com. Research Analyst views on Subject Company may vary based on Fundamental research and Technical Research. Proprietary trading desk of MOFSL or its associates maintains arm's length distance with Research Team as all the activities are segregated from MOFSL research activity and therefore it can have an independent view with regards to subject company for which Research Team have expressed their views.

Investment in securities market are subject to market risks, read all the related documents carefully before investing.

Regional Disclosures (outside India)

This report is not directed or intended for distribution to or use by any person or entity resident in a state, country or any jurisdiction, where such distribution, publication, availability or use would be contrary to law, regulation or which would subject MOFSL & its group companies to registration or licensing requirements within such jurisdictions.

For Hong Kong:

This report is distributed in Hong Kong by Motilal Oswal capital Markets (Hong Kong) Private Limited, a licensed corporation (CE AYY-301) licensed and regulated by the Hong Kong Securities and Futures Commission (SFC) pursuant to the Securities and Futures Ordinance (Chapter 571 of the Laws of Hong Kong) “SFO”. As per SEBI (Research Analyst Regulations) 2014 Motilal Oswal Financial Services Limited (SEBI Reg No. INH000000412) has an agreement with Motilal Oswal capital Markets (Hong Kong) Private Limited for distribution of research report in Hong Kong. This report is intended for distribution only to “Professional Investors” as defined in Part I of Schedule 1 to SFO. Any investment or investment activity to which this document relates is only available to professional investor and will be engaged only with professional investors.” Nothing here is an offer or solicitation of these securities, products and services in any jurisdiction where their offer or sale is not qualified or exempt from registration. The Indian Analyst(s) who compile this report is/are not located in Hong Kong & are not conducting Research Analysis in Hong Kong.

For U.S.

MOTILAL Oswal Financial Services Limited (MOFSL) is not a registered broker - dealer under the U.S. Securities Exchange Act of 1934, as amended (the "1934 act") and under applicable state laws in the United States. In addition MOFSL is not a registered investment adviser under the U.S. Investment Advisers Act of 1940, as amended (the "Advisers Act" and together with the 1934 Act, the "Acts), and under applicable state laws in the United States. Accordingly, in the absence of specific exemption under the Acts, any brokerage and investment services provided by MOFSL, including the products and services described herein are not available to or intended for U.S. persons. This report is intended for distribution only to "Major Institutional Investors" as defined by Rule 15a-6(b)(4) of the Exchange Act and interpretations thereof by SEC (henceforth referred to as "major institutional investors"). This document must not be acted on or relied on by persons who are not major institutional investors. Any investment or investment activity to which this document relates is only available to major institutional investors and will be engaged in only with major institutional investors. In reliance on the exemption from registration provided by Rule 15a-6 of the U.S. Securities Exchange Act of 1934, as amended (the "Exchange Act") and interpretations thereof by the U.S. Securities and Exchange Commission ("SEC") in order to conduct business with Institutional Investors based in the U.S., MOFSL has entered into a chaperoning agreement with a U.S. registered broker-dealer, Motilal Oswal Securities International Private Limited. ("MOSIPL"). Any business interaction pursuant to this report will have to be executed within the provisions of this chaperoning agreement.

The Research Analysts contributing to the report may not be registered /qualified as research analyst with FINRA. Such research analyst may not be associated persons of the U.S. registered broker-dealer, MOSIPL, and therefore, may not be subject to NASD rule 2711 and NYSE Rule 472 restrictions on communication with a subject company, public appearances and trading securities held by a research analyst account.

For Singapore

In Singapore, this report is being distributed by Motilal Oswal Capital Markets (Singapore) Pte. Ltd. (“MOCMSPL”) (UEN 201129401Z), which is a holder of a capital markets services license and an exempt financial adviser in Singapore.This report is distributed solely to persons who (a) qualify as “institutional investors” as defined in section 4A(1)(c) of the Securities and Futures Act of Singapore (“SFA”) or (b) are considered "accredited investors" as defined in section 2(1) of the Financial Advisers Regulations of Singapore read with section 4A(1)(a) of the SFA. Accordingly, if a recipient is neither an “institutional investor” nor an “accredited investor”, they must immediately discontinue any use of this Report and inform MOCMSPL .

In respect of any matter arising from or in connection with the research you could contact the following representatives of MOCMSPL. In case of grievances for any of the services rendered by MOCMSPL write to grievances@motilaloswal.com.

Nainesh Rajani
Email: nainesh.rajani@motilaloswal.com
Contact: (+65) 8328 0276

Disclaimer:

This report is intended for distribution to Retail Investors.

The report and information contained herein is strictly confidential and meant solely for the selected recipient and may not be altered in any way, transmitted to, copied or distributed, in part or in whole, to any other person or to the media or reproduced in any form, without prior written consent. This report and information herein is solely for informational purpose and may not be used or considered as an offer document or solicitation of offer to buy or sell or subscribe for securities or other financial instruments. Nothing in this report constitutes investment, legal, accounting and tax advice or a representation that any investment or strategy is suitable or appropriate to your specific circumstances. The securities discussed and opinions expressed in this report may not be suitable for all investors, who must make their own investment decisions, based on their own investment objectives, financial positions and needs of specific recipient. This may not be taken in substitution for the exercise of independent judgment by any recipient. Each recipient of this document should make such investigations as it deems necessary to arrive at an independent evaluation of an investment in the securities of companies referred to in this document (including the merits and risks involved), and should consult its own advisors to determine the merits and risks of such an investment. The investment discussed or views expressed may not be suitable for all investors. Certain transactions -including those involving futures, options, another derivative products as well as non-investment grade securities - involve substantial risk and are not suitable for all investors. No representation or warranty, express or implied, is made as to the accuracy, completeness or fairness of the information and opinions contained in this document. The Disclosures of Interest Statement incorporated in this document is provided solely to enhance the transparency and should not be treated as endorsement of the views expressed in the report. This information is subject to change without any prior notice. The Company reserves the right to make modifications and alternations to this statement as may be required from time to time without any prior approval. MOFSL, its associates, their directors and the employees may from time to time, effect or have effected an own account transaction in, or deal as principal or agent in or for the securities mentioned in this document. They may perform or seek to perform investment banking or other services for, or solicit investment banking or other business from, any company referred to in this report. Each of these entities functions as a separate, distinct and independent of each other. The recipient should take this into account before interpreting the document. This report has been prepared on the basis of information that is already available in publicly accessible media or developed through analysis of MOFSL. The views expressed are those of the analyst, and the Company may or may not subscribe to all the views expressed therein. This document is being supplied to you solely for your information and may not be reproduced, redistributed or passed on, directly or indirectly, to any other person or published, copied, in whole or in part, for any purpose. This report is not directed or intended for distribution to, or use by, any person or entity who is a citizen or resident of or located in any locality, state, country or other jurisdiction, where such distribution, publication, availability or use would be contrary to law, regulation or which would subject MOFSL to any registration or licensing requirement within such jurisdiction. The securities described herein may or may not be eligible for sale in all jurisdictions or to certain category of investors. Persons in whose possession this document may come are required to inform themselves of and to observe such restriction. Neither the Firm, not its directors, employees, agents or representatives shall be liable for any damages whether direct or indirect, incidental, special or consequential including lost revenue or lost profits that may arise from or in connection with the use of the information. The person accessing this information specifically agrees to exempt MOFSL or any of its affiliates or employees from, any and all responsibility/liability arising from such misuse and agrees not to hold MOFSL or any of its affiliates or employees responsible for any such misuse and further agrees to hold MOFSL or any of its affiliates or employees free and harmless from all losses, costs, damages, expenses that may be` suffered by the person accessing this information due to any errors and delays.

This report is meant for the clients of Motilal Oswal only.

Investment in securities market are subject to market risks. Read all the related documents carefully before investing.

Registration granted by SEBI, enlistment as RA with Exchange and certification from NISM in no way guarantee performance of the intermediary or provide any assurance of returns to investors

Registered Office Address: Motilal Oswal Tower, Rahimtullah Sayani Road, Opposite Parel ST Depot, Prabhadevi, Mumbai-400025; Tel No.: 022 - 71934200 / 71934263; www.motilaloswal.com. Correspondence Address: Palm Spring Centre, 2nd Floor, Palm Court Complex, New Link Road, Malad (West), Mumbai- 400 064. Tel No: 022 71881000. Details of Compliance Officer: Neeraj Agarwal, Email Id: na@motilaloswal.com, Contact No.:022-40548085.

Grievance Redressal Cell:			
Contact Person	Contact No.	Email ID	
Ms. Hemangi Date	022 40548000 / 022 67490600	query@motilaloswal.com	
Ms. Kumud Upadhyay	022 40548082	servicehead@motilaloswal.com	
Mr. Ajay Menon	022 40548083	am@motilaloswal.com	
Mr. Neeraj Agarwal	022 40548085	na@motilaloswal.com	
Mr. Siddhartha Khemka	022 50362452	po.research@motilaloswal.com	

Registration details of group entities.: Motilal Oswal Financial Services Ltd. (MOFSL): INZ000158836 (BSE/NSE/MCX/NCDEX); CDSL and NSDL: IN-DP-16-2015; Research Analyst: INH000000412, BSE enlistment no. 5028, AMFI registered Mutual Fund Distributor and SIF Distributor: ARN .: 146822. IRDA Corporate Agent – CA0579, APMI: APRN00233. Motilal Oswal Financial Services Ltd. is a distributor of Mutual Funds, PMS, Fixed Deposit, Insurance, Bond, NCDs and IPO products. Customer having any query/feedback/ clarification may write to query@motilaloswal.com. In case of grievances for any of the services rendered by Motilal Oswal Financial Services Limited (MOFSL) write to grievances@motilaloswal.com, for DP to dpgrievances@motilaloswal.com.

Investment in securities market are subject to market risks, read all the related documents carefully before investing.