



Solid Research
Solid Relationships

Fundamental Outlook

Global Market Setup

- **US Indices ended on a mixed note**, as investors weighed up the likely end to the long-running government shutdown, though gains were held back by slip in Nvidia and other AI-related stocks.
- **Dow Jones was up 0.7%, S&P 500 ended +0.1% higher and Nasdaq ended -0.3% lower.**
- **European markets rallied ~ 1%.**
- **Dow futures is currently trading with a gain of 0.2%.**
- **Asian markets are mostly trading on a flat to positive note**, as investors stayed cautious with limited economic data clouding the outlook for Federal Reserve policy.

Global Cues: Muted

Indian Market Setup

- **Indian equities** extended gains for a third straight session on Wednesday, supported by the U.S. softening its stand on India over trade tariffs.
- **Nifty50** closed with a **gain of 181 points at 25,876 (+0.7%)**.
- **Nifty Midcap100** gained by **475 points (+0.8%)** and **smallcap100** closed with gain of **149 points (+0.8%)**.
- **FII**s: **-₹1,750cr**; **DII**s: **+₹5,127cr**
- **GIFT Nifty** is trading flat

Domestic Cues: Muted

Stocks in News

Gujarat Gas: IOCL has reduced propane prices in Morbi by another Rs1.1/scm

View: **Negative**

Ather Energy: NIIF II likely to sell Rs551 cr stake in Ather Energy via block deal at Rs620/sh floor price, as per media reports. Recently, it reported 54%/39% YoY/QoQ rise in revenue for the quarter ended September 30, 2025, driven by higher deliveries and festive demand. As a result, Ather's net loss for the quarter stood at Rs 154 crore, narrowing from a loss of Rs 197 crore in the same quarter last year.

View: **Good Buying opportunity**

Results Today: Eicher Motors, LG Electronics, Hero Motocorp, Vishal Megamart, Page Industries, Jubilant foods, IPCA Labs, Bharat Dynamics, Motherson Sumi, etc

Fundamental Actionable Idea

Asian Paints

CMP INR2770, MTF Stock

- Asian Paints (APNT) reported a 6% YoY growth in consolidated revenue, with standalone sales up 6% YoY, marking growth after six consecutive quarters of decline. Domestic decorative volumes grew 11% YoY.
- Extended monsoon impacted early-quarter demand, but a visible recovery was seen in September and October, supported by festive demand and improved consumer sentiment. The international business grew 9.9% YoY (+10.6% in constant currency terms).
- EBITDA margin expanded 220bp YoY to 17.6%, driven by lower raw material costs, resulting in a 21% YoY growth in EBITDA (vs. est. +9%).
- Management expects mid-single-digit value growth and high-single-digit volume growth for FY26. Additionally, it maintains its EBITDA margin guidance of 18-20%, supported by formulation and sourcing efficiencies. We model +8% revenue growth in 2HFY26, factoring in a favorable base, improving demand scenario, and the company's own initiatives to regain growth.
- While competitive intensity remains elevated, the demand environment is stabilizing, and with the peak of disruption behind, APNT appears well-positioned to sustain steady growth and defend its market leadership.

View: Positive

Fundamental Actionable Idea

Ashok Leyland

CMP INR143, TP INR165, 16% Upside, Buy, MTF Stock

- Ashok Leyland (AL)'s 2QFY26 PAT stood at INR8b. It was 8% ahead of our estimate, primarily driven by a higher-than-expected other income, even as EBITDA came in line. AL's margin improved 50bp YoY to 12.1% and was a function of improved mix and industry pricing discipline.
- While LCV demand is already showing signs of revival, we expect MHCV truck demand to recover in the coming quarters, aided by a pick-up in consumption pan-India, induced by the recent GST rate cuts.
- Over the years, AL has effectively reduced its business cyclicity by focusing on non-truck segments. Its continued emphasis on margin expansion and prudent control of capex is expected to help improve returns in the long run.
- Further, a net cash position will enable AL to invest in growth avenues in the coming years.

View: Buy

Fundamental Actionable Idea

Velocity Idea – Max Financial Services

RECO: BUY, CMP: ₹ 1672, SL: ₹ 1560 (6%), TP: ₹ 1893 (12%)

Key Triggers:

- MAX Financial reported strong 2QFY26 with gross premium income/new business APE up 18%/16% YoY. VNB grew 25% YoY, with margins expanding 150bp YoY to 25.5%, driven by higher contribution from protection, non-par, & annuity products.
- The proprietary channel remained a key growth driver, supported by strong traction in non-Axis bancassurance partnerships and improved persistency across long-term cohorts.
- MAX Financial delivered above-industry growth with sustained margin expansion and a balanced product mix supporting long-term profitability visibility.

Technical View:

- Stock has broken out of a falling supply trendline on the daily chart after bouncing po from its 50 DEMA.
- The RSI momentum indicator is rising which confirms the positive sentiment.

View: Positive

Focus Investment Ideas

All Stocks Available in MTF

Duration : 1 Year Horizon

Stock Name	Rating	CMP (Rs)	Target (Rs)	Upside (%)
TVS Motors	Buy	3,454	4,159	20%
Bharat Electronics	Buy	425	490	15%
TATA Steel	Buy	179	210	17%
Rubicon Research	Buy	627	740	18%
Aditya Birla Capital	Buy	330	380	15%

Technical Outlook

Nifty Technical Outlook

NIFTY (CMP : 25875) Nifty immediate support is at 25750 then 25650 zones while resistance at 26000 then 26150 zones. Now it has to hold above 25800 zones for momentum to continue towards 26000 then 26150 zones while supports have shifted higher to 25750 then 25650 zones.



Bank Nifty Technical Outlook

13-Nov-25

BANK NIFTY (CMP : 58274) Bank Nifty support is at 58000 then 57750 zones while resistance at 58577 then 58750 zones. Now it has to hold above 58000 zones for an up move towards 58577 marks then 58750 zones while on the downside support is seen at 58000 then 57750 levels.

1-Niftybank - 12/11/25



Investment in securities market are subject to market risks, read all the related documents carefully before investing.

Midcap100 Index Technical Outlook

13-Nov-25



Nifty Midcap100 Stats

Advance
67

Decline
33

- Consolidation Breakout near “All Time High” zones.

Smallcap250 Index Technical Outlook

13-Nov-25



Nifty SmallCap250 Stats

Advance
166

Decline
84

- Hammer Candle near support zones and forming small bodied candles.

Sectoral Performance

13-Nov-25

	Closing	% Change				
Indices	12-Nov	1-day	2-days	3-days	5-days	
NIFTY 50	25876	<div><div></div></div> 0.70%	<div><div></div></div> 1.18%	<div><div></div></div> 1.51%	<div><div></div></div> 1.09%	
NIFTY BANK	58275	<div><div></div></div> 0.23%	<div><div></div></div> 0.58%	<div><div></div></div> 0.69%	<div><div></div></div> 0.77%	
NIFTY MIDCAP 100	60902	<div><div></div></div> 0.79%	<div><div></div></div> 1.29%	<div><div></div></div> 1.77%	<div><div></div></div> 1.44%	
NIFTY SMALLCAP 250	17120	<div><div></div></div> 0.74%	<div><div></div></div> 0.59%	<div><div></div></div> 0.59%	<div><div></div></div> -1.16%	
NIFTY FINANCIAL SERVICES	27337	<div><div></div></div> 0.21%	<div><div></div></div> 0.12%	<div><div></div></div> 0.36%	<div><div></div></div> 0.52%	
NIFTY PRIVATE BANK	28128	<div><div></div></div> 0.29%	<div><div></div></div> 0.65%	<div><div></div></div> 0.69%	<div><div></div></div> 0.60%	
NIFTY PSU BANK	8360	<div><div></div></div> 0.62%	<div><div></div></div> 0.23%	<div><div></div></div> 0.09%	<div><div></div></div> 0.33%	
➡ NIFTY IT	36855	<div><div></div></div> 2.04%	<div><div></div></div> 3.27%	<div><div></div></div> 4.95%	<div><div></div></div> 4.48%	
NIFTY FMCG	55529	<div><div></div></div> 0.01%	<div><div></div></div> 0.35%	<div><div></div></div> 0.17%	<div><div></div></div> -0.51%	
NIFTY OIL & GAS	12191	<div><div></div></div> 0.81%	<div><div></div></div> 1.41%	<div><div></div></div> 1.62%	<div><div></div></div> 1.42%	
➡ NIFTY PHARMA	22593	<div><div></div></div> 1.00%	<div><div></div></div> 0.95%	<div><div></div></div> 1.91%	<div><div></div></div> 1.16%	
➡ NIFTY AUTO	27485	<div><div></div></div> 1.24%	<div><div></div></div> 2.33%	<div><div></div></div> 2.64%	<div><div></div></div> 3.29%	
NIFTY METAL	10543	<div><div></div></div> -0.16%	<div><div></div></div> 0.55%	<div><div></div></div> 1.11%	<div><div></div></div> 0.41%	
NIFTY REALTY	938	<div><div></div></div> -0.49%	<div><div></div></div> -0.66%	<div><div></div></div> -0.85%	<div><div></div></div> -2.41%	
NIFTY INDIA DEFENCE	8249	<div><div></div></div> -0.28%	<div><div></div></div> 2.17%	<div><div></div></div> 3.65%	<div><div></div></div> 2.43%	

- Among the sectoral indices Nifty IT, Auto and Pharma were the top gainers.

Investment in securities market are subject to market risks, read all the related documents carefully before investing.

Brent Crude Oil



13-Nov-25

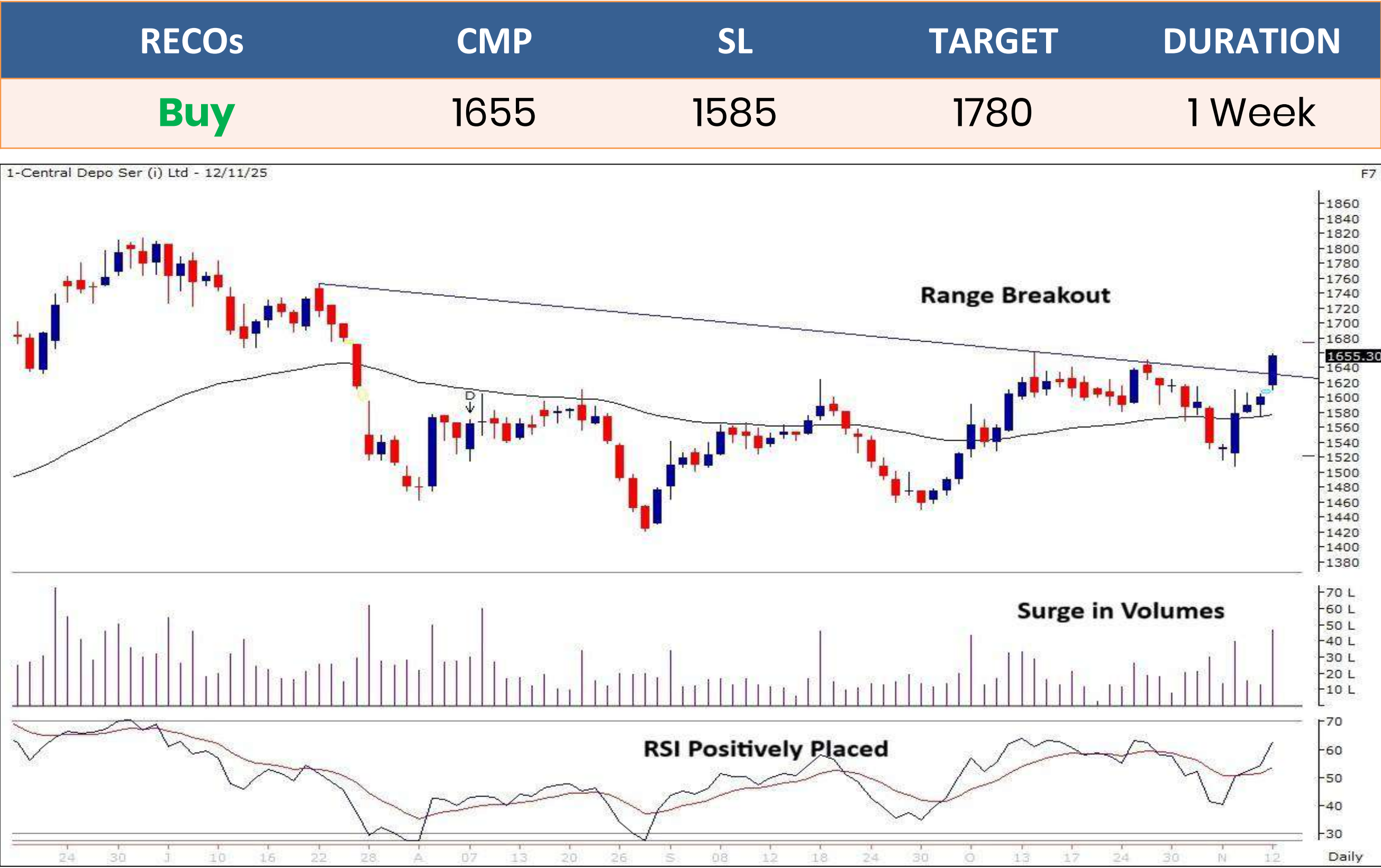
Technical – Conviction Delivery Idea

CDSL

(Mcap ₹ 34,596 Cr.)

F&O Stock, MTF stock

- Falling supply trendline breakout on daily chart.
- Strong bullish candle.
- Surpassed above its 50 DEMA.
- Surge in volumes.
- RSI momentum indicator positively placed
- We recommend to buy the stock at CMP ₹1655 with a SL of ₹1585 and a TGT of ₹1780.



Technical Stocks On Radar

13-Nov-25

ADANI PORTS

(CMP: 1506, Mcap ₹ 3,25,511 Cr.)

F&O Stock, MTF stock

- Consolidation breakout.
- Respecting 50 DEMA.
- Surge in volumes.
- RSI momentum indicator bullish crossover.
- Immediate support at 1440.



JIOFIN

(CMP: 309, Mcap ₹ 1,96,602 Cr.)

F&O Stock, MTF stock

- Falling supply trendline breakout.
- Close above 50 DEMA.
- Rising volumes.
- RSI indicator positively placed.
- Immediate support at 299.



Technical Chart Pattern for the Day

LUPIN (Mcap ₹ 92,901 Cr.) (CMP : 2033) F&O Stock, MTF stock

13-Nov-25



- “Symmetrical Triangle” pattern formation; Support : 1960

Derivative Outlook

Nifty : Option Data

13-Nov-25

- Maximum Call OI is at 26000 then 26500 strike while Maximum Put OI is at 25800 then 25900 strike.
- Call writing is seen at 26000 then 26400 strike while Put writing is seen at 25800 then 25900 strike.
- Option data suggests a broader trading range in between 25400 to 26300 zones while an immediate range between 25700 to 26100 levels.

Nifty 50 OI Chart(18 Nov 2025)




Investment in securities market are subject to market risks, read all the related documents carefully before investing.

Option - Buying side strategy

Index	Single Leg Buying	Multi Leg Strategy
Nifty (Weekly)	26050 CE if it holds above 25800	Bull Call Spread (Buy 26000 CE and Sell 26100 CE) at net premium cost of 35-40 points
Sensex (Weekly)	84500 CE if it holds above 84300	Bull Call Spread (Buy 84600 CE and Sell 84800 CE) at net premium cost of 70-80 points
Bank Nifty (Monthly)	59300 CE if it holds above 58000	Bull Call Spread (Buy 58500 CE and Sell 59000 CE) at net premium cost of 250-260 points

Option - Selling side strategy

Index	Writing
Nifty (Weekly)	25100 PE & 26450 CE
Sensex (Weekly)	83500 PE & 85300 CE
Bank Nifty (Monthly)	55000 PE & 61000 CE

Weekly Option Range for Option Writers based on Different Confidence Band								
Date		13-Nov-25	Weekly Expiry		18-Nov-25	Days to weekly expiry		4
Nifty		25876	India VIX		12.1			
Confidence Band	Probability	% Away From Spot	Range				Total Premium (Put + Call)	Types of Trades
			Put	Premium	Call	Premium		
1.00	68%	± 0.9%	25650	46	26150	48	94	Aggressive
1.25	79%	± 1.3%	25550	32	26250	28	60	Less Aggressive
1.50	87%	± 1.5%	25500	27	26300	22	48	Neutral
1.75	92%	± 1.6%	25450	23	26350	17	39	Conservative
2.00	95%	± 2.0%	25350	17	26450	10	27	Most Conservative
Date		13-Nov-25	Monthly Expiry		25-Nov-25	Days to weekly expiry		9
Bank Nifty		58275						
Confidence Band	Probability	% Away From Spot	Range				Total Premium (Put + Call)	Types of Trades
			Put	Premium	Call	Premium		
1.00	68%	± 1.7%	57300	155	59300	199	355	Aggressive
1.25	79%	± 2.2%	57000	118	59600	138	256	Less Aggressive
1.50	87%	± 2.5%	56800	100	59800	106	207	Neutral
1.75	92%	± 3.0%	56500	78	60100	75	153	Conservative
2.00	95%	± 3.4%	56300	68	60300	59	127	Most Conservative
Investments in securities markets are subject to market risks. Please read all related documents carefully.								

Nifty Advance Decline & Ban update

Stocks in Ban:

SAIL

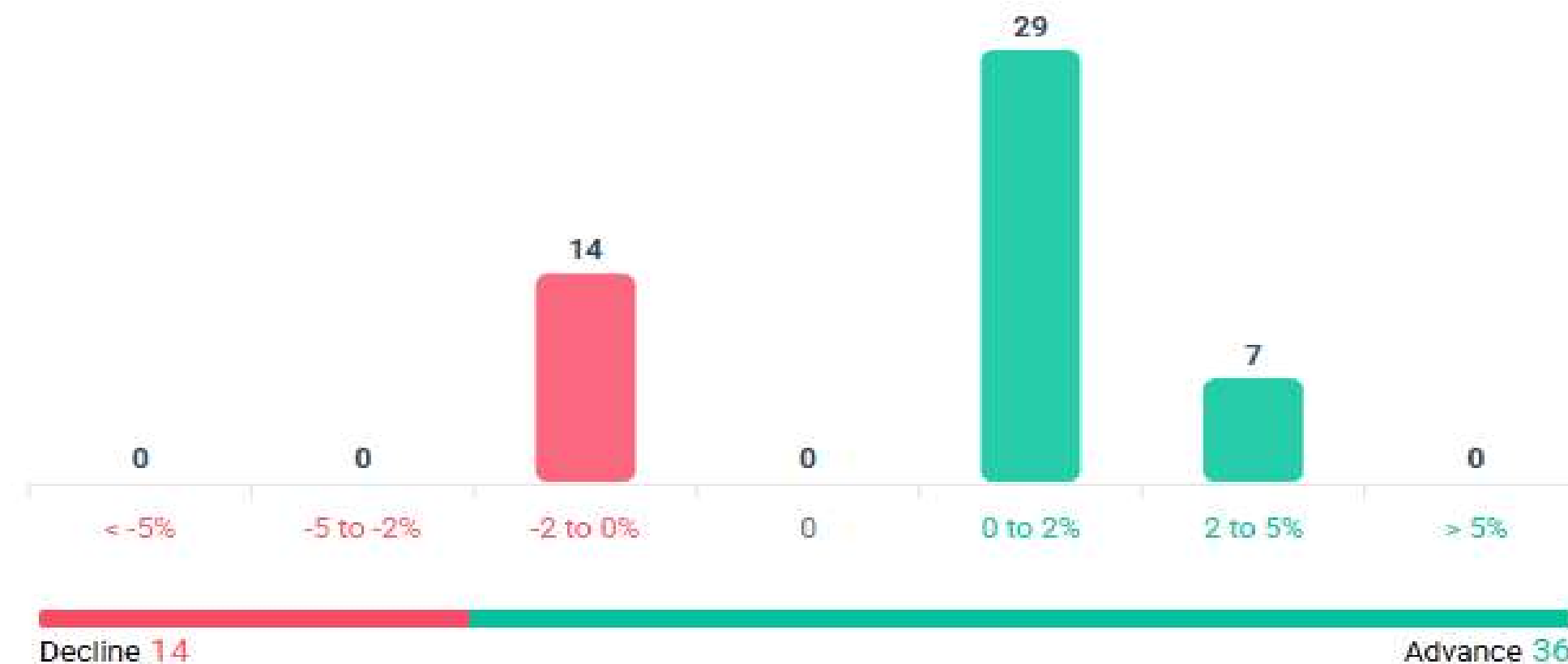
Advance & Decline

All FNO

Nifty 50

Bank Nifty

Fin Nifty

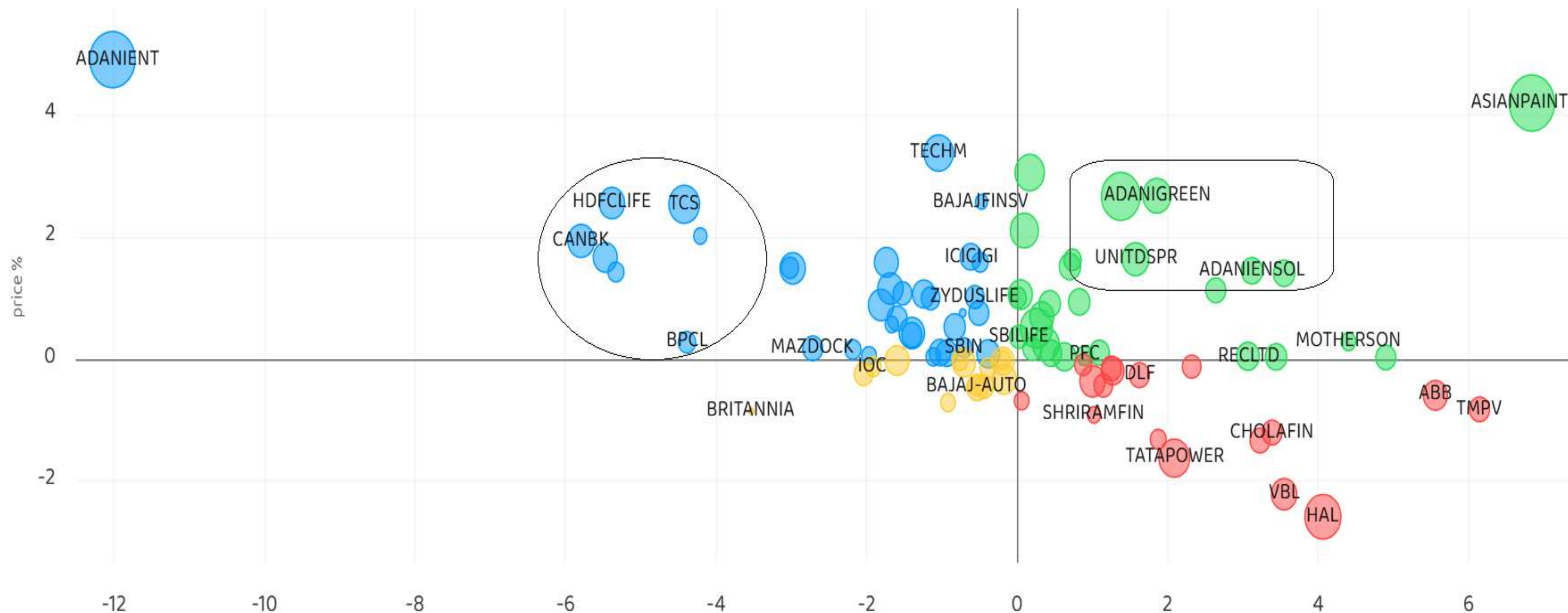


Investment in securities market are subject to market risks, read all the related documents carefully before investing.

Stocks : Derivatives Outlook

13-Nov-25

● short_covering ● long_buildup ● long_unwinding ● short_buildup



Investment in securities market are subject to market risks, read all the related documents carefully before investing.

Stocks : Options on radar

Stock	Call Strike	Trade	Buying Range	SL	TGT	Logic
LUPIN	2040 CE	Buy	39-40	33	52	Short Covering
HEROMOTOCO	5550 CE	Buy	115-117	100	147	Long Built up
INFY	1560 CE	Buy	14-15	8	27	Long Built up

Stock	Put Strike	Trade	Buying Range	SL	TGT	Logic
GODREJCP	1140 PE	Buy	17-18	12	28	Long Unwinding
OBEROIRLTY	1740 PE	Buy	32-33	25	47	Short Built up

Quant Outlook

Quant Intraday Sell Ideas

What is this?

Based on technical indicators this strategy gives 2 stocks that have a high likelihood to fall during the day (from open to close). This is an intraday Sell strategy which can provide a good cushioning during a black swan event.

Today's **Sell** Ideas:

Stock Names	Close Price	SL (1%)	TP (1%)
IDEA (Sell)	10.4	10.5	10.3
YESBANK (Sell)	22.8	23.0	22.5

What are the rules?

- Stock names will be given at market open (9:15 am)
- Recommended time to entry: between 9:15 to 9:30 am.
- Entry: We short 2 stocks daily (intraday)
- Exit: we will exit at 3:15 as this is an intraday call
- SL: is placed at 1% of the open.
- Book profit: At 1% fall since open.
- In special situations the book profit might be delayed if the stock is in free fall.

Siddhartha Khemka
Head – Retail Research

Chandan Taparia, CMT, CFTe
Head – Derivatives & Technical Research

Neil Jha
Head - Quant

Disclosures:

The following Disclosures are being made in compliance with the SEBI Research Analyst Regulations 2014 (herein after referred to as the Regulations).

Motilal Oswal Financial Services Ltd. (MOFSL) is a SEBI Registered Research Analyst having registration no. INH000000412 and BSE enlistment no. 5028. MOFSL, the Research Entity (RE) as defined in the Regulations, is engaged in the business of providing Stock broking services, Depository participant services & distribution of various financial products. MOFSL is a listed public company, the details in respect of which are available on www.motilaloswal.com. MOFSL is registered with the Securities & Exchange Board of India (SEBI) and is a registered Trading Member with National Stock Exchange of India Ltd. (NSE) and Bombay Stock Exchange Limited (BSE), Multi Commodity Exchange of India Limited (MCX) and National Commodity & Derivatives Exchange Limited (NCDEX) for its stock broking activities & is Depository participant with Central Depository Services Limited (CDSL) National Securities Depository Limited (NSDL), NERL, COMRIS and CCRL and is member of Association of Mutual Funds of India (AMFI) for distribution of financial products and Insurance Regulatory & Development Authority of India (IRDA) as Corporate Agent for insurance products and is a member of Association of Portfolio Managers in India (APMI) for distribution of PMS products. Details of associate entities of Motilal Oswal Financial Services Ltd. are available on the website at <http://onlinereports.motilaloswal.com/Dormant/documents/Associate%20Details.pdf>

Details of pending Enquiry Proceedings of Motilal Oswal Financial Services Limited are available on the website at <https://galaxy.motilaloswal.com/ResearchAnalyst/PublishViewLitigation.aspx>. As per Regulatory requirements, Research Audit Report is uploaded on www.motilaloswal.com > MOFSL-Important Links > MOFSL Research Analyst Compliance Audit Report.

MOFSL, its associates, Research Analyst or their relatives may have any financial interest in the subject company. MOFSL and/or its associates and/or Research Analyst or their relatives may have actual beneficial ownership of 1% or more securities in the subject company at the end of the month immediately preceding the date of publication of the Research Report or date of the public appearance. MOFSL and its associate company(ies), their directors and Research Analyst and their relatives may have any other potential conflict of interests at the time of publication of the research report or at the time of public appearance, however the same shall have no bearing whatsoever on the specific recommendations made by the analyst(s), as the recommendations made by the analyst(s) are completely independent of the views of the associates of MOFSL even though there might exist an inherent conflict of interest in some of the stocks mentioned in the research report..

In the past 12 months, MOFSL or any of its associates may have:

- a) received any compensation/other benefits from the subject company of this report
- b) managed or co-managed public offering of securities from subject company of this research report,
- c) received compensation for investment banking or merchant banking or brokerage services from subject company of this research report,
- d) received compensation for products or services other than investment banking or merchant banking or brokerage services from the subject company of this research report.

- MOFSL and its associates have not received any compensation or other benefits from the subject company or third party in connection with the research report.
- Subject Company may have been a client of MOFSL or its associates during twelve months preceding the date of distribution of the research report.
- Research Analyst may have served as director/officer/employee in the subject company.
- MOFSL and research analyst may engage in market making activity for the subject company.

MOFSL and its associate company(ies), and Research Analyst and their relatives from time to time may have:

a) a long or short position in, act as principal in, and buy or sell the securities or derivatives thereof of companies mentioned herein.

(b) be engaged in any other transaction involving such securities and earn brokerage or other compensation or act as a market maker in the financial instruments of the company(ies) discussed herein or act as an advisor or lender/borrower to such company(ies) or may have any other potential conflict of interests with respect to any recommendation and other related information and opinions.; however the same shall have no bearing whatsoever on the specific recommendations made by the analyst(s), as the recommendations made by the analyst(s) are completely independent of the views of the associates of MOFSL even though there might exist an inherent conflict of interest in some of the stocks mentioned in the research report.

Above disclosures include beneficial holdings lying in demat account of MOFSL which are opened for proprietary investments only. While calculating beneficial holdings, It does not consider demat accounts which are opened in name of MOFSL for other purposes (i.e holding client securities, collaterals, error trades etc.). MOFSL also earns DP income from clients which are not considered in above disclosures.

To enhance transparency, MOFSL has incorporated a Disclosure of Interest Statement in this document. This should, however, not be treated as endorsement of the views expressed in the report. MOFSL and / or its affiliates do and seek to do business including investment banking with companies covered in its research reports. As a result, the recipients of this report should be aware that MOFSL may have a potential conflict of interest that may affect the objectivity of this report.

Terms & Conditions:

This report has been prepared by MOFSL and is meant for sole use by the recipient and not for circulation. The report and information contained herein is strictly confidential and may not be altered in any way, transmitted to, copied or distributed, in part or in whole, to any other person or to the media or reproduced in any form, without prior written consent of MOFSL. The report is based on the facts, figures and information that are considered true, correct, reliable and accurate. The intent of this report is not recommendatory in nature. The information is obtained from publicly available media or other sources believed to be reliable. Such information has not been independently verified and no guaranty, representation of warranty, express or implied, is made as to its accuracy, completeness or correctness. All such information and opinions are subject to change without notice. The report is prepared solely for informational purpose and does not constitute an offer document or solicitation of offer to buy or sell or subscribe for securities or other financial instruments for the clients. Though disseminated to all the customers simultaneously, not all customers may receive this report at the same time. MOFSL will not treat recipients as customers by virtue of their receiving this report.

Analyst Certification

The views expressed in this research report accurately reflect the personal views of the analyst(s) about the subject securities or issues, and no part of the compensation of the research analyst(s) was, is, or will be directly or indirectly related to the specific recommendations and views expressed by research analyst(s) in this report.

Disclosure of Interest Statement

Analyst ownership of the stock	No
--------------------------------	----

A graph of daily closing prices of securities is available at www.nseindia.com, www.bseindia.com. Research Analyst views on Subject Company may vary based on Fundamental research and Technical Research. Proprietary trading desk of MOFSL or its associates maintains arm's length distance with Research Team as all the activities are segregated from MOFSL research activity and therefore it can have an independent view with regards to subject company for which Research Team have expressed their views.

Investment in securities market are subject to market risks, read all the related documents carefully before investing.

Regional Disclosures (outside India)

This report is not directed or intended for distribution to or use by any person or entity resident in a state, country or any jurisdiction, where such distribution, publication, availability or use would be contrary to law, regulation or which would subject MOFSL & its group companies to registration or licensing requirements within such jurisdictions.

For Hong Kong:

This report is distributed in Hong Kong by Motilal Oswal capital Markets (Hong Kong) Private Limited, a licensed corporation (CE AYY-301) licensed and regulated by the Hong Kong Securities and Futures Commission (SFC) pursuant to the Securities and Futures Ordinance (Chapter 571 of the Laws of Hong Kong) “SFO”. As per SEBI (Research Analyst Regulations) 2014 Motilal Oswal Financial Services Limited (SEBI Reg No. INH000000412) has an agreement with Motilal Oswal capital Markets (Hong Kong) Private Limited for distribution of research report in Hong Kong. This report is intended for distribution only to “Professional Investors” as defined in Part I of Schedule 1 to SFO. Any investment or investment activity to which this document relates is only available to professional investor and will be engaged only with professional investors.” Nothing here is an offer or solicitation of these securities, products and services in any jurisdiction where their offer or sale is not qualified or exempt from registration. The Indian Analyst(s) who compile this report is/are not located in Hong Kong & are not conducting Research Analysis in Hong Kong.

For U.S.

MOTILAL Oswal Financial Services Limited (MOFSL) is not a registered broker - dealer under the U.S. Securities Exchange Act of 1934, as amended (the "1934 act") and under applicable state laws in the United States. In addition MOFSL is not a registered investment adviser under the U.S. Investment Advisers Act of 1940, as amended (the "Advisers Act" and together with the 1934 Act, the "Acts), and under applicable state laws in the United States. Accordingly, in the absence of specific exemption under the Acts, any brokerage and investment services provided by MOFSL, including the products and services described herein are not available to or intended for U.S. persons. This report is intended for distribution only to "Major Institutional Investors" as defined by Rule 15a-6(b)(4) of the Exchange Act and interpretations thereof by SEC (henceforth referred to as "major institutional investors"). This document must not be acted on or relied on by persons who are not major institutional investors. Any investment or investment activity to which this document relates is only available to major institutional investors and will be engaged in only with major institutional investors. In reliance on the exemption from registration provided by Rule 15a-6 of the U.S. Securities Exchange Act of 1934, as amended (the "Exchange Act") and interpretations thereof by the U.S. Securities and Exchange Commission ("SEC") in order to conduct business with Institutional Investors based in the U.S., MOFSL has entered into a chaperoning agreement with a U.S. registered broker-dealer, Motilal Oswal Securities International Private Limited. ("MOSIPL"). Any business interaction pursuant to this report will have to be executed within the provisions of this chaperoning agreement.

The Research Analysts contributing to the report may not be registered /qualified as research analyst with FINRA. Such research analyst may not be associated persons of the U.S. registered broker-dealer, MOSIPL, and therefore, may not be subject to NASD rule 2711 and NYSE Rule 472 restrictions on communication with a subject company, public appearances and trading securities held by a research analyst account.

For Singapore

In Singapore, this report is being distributed by Motilal Oswal Capital Markets (Singapore) Pte. Ltd. (“MOCMSPL”) (UEN 201129401Z), which is a holder of a capital markets services license and an exempt financial adviser in Singapore.This report is distributed solely to persons who (a) qualify as “institutional investors” as defined in section 4A(1)(c) of the Securities and Futures Act of Singapore (“SFA”) or (b) are considered "accredited investors" as defined in section 2(1) of the Financial Advisers Regulations of Singapore read with section 4A(1)(a) of the SFA. Accordingly, if a recipient is neither an “institutional investor” nor an “accredited investor”, they must immediately discontinue any use of this Report and inform MOCMSPL .

In respect of any matter arising from or in connection with the research you could contact the following representatives of MOCMSPL. In case of grievances for any of the services rendered by MOCMSPL write to grievances@motilaloswal.com.

Nainesh Rajani

Email: nainesh.rajani@motilaloswal.com

Contact: (+65) 8328 0276

Disclaimer:

This report is intended for distribution to Retail Investors.

The report and information contained herein is strictly confidential and meant solely for the selected recipient and may not be altered in any way, transmitted to, copied or distributed, in part or in whole, to any other person or to the media or reproduced in any form, without prior written consent. This report and information herein is solely for informational purpose and may not be used or considered as an offer document or solicitation of offer to buy or sell or subscribe for securities or other financial instruments. Nothing in this report constitutes investment, legal, accounting and tax advice or a representation that any investment or strategy is suitable or appropriate to your specific circumstances. The securities discussed and opinions expressed in this report may not be suitable for all investors, who must make their own investment decisions, based on their own investment objectives, financial positions and needs of specific recipient. This may not be taken in substitution for the exercise of independent judgment by any recipient. Each recipient of this document should make such investigations as it deems necessary to arrive at an independent evaluation of an investment in the securities of companies referred to in this document (including the merits and risks involved), and should consult its own advisors to determine the merits and risks of such an investment. The investment discussed or views expressed may not be suitable for all investors. Certain transactions -including those involving futures, options, another derivative products as well as non-investment grade securities - involve substantial risk and are not suitable for all investors. No representation or warranty, express or implied, is made as to the accuracy, completeness or fairness of the information and opinions contained in this document. The Disclosures of Interest Statement incorporated in this document is provided solely to enhance the transparency and should not be treated as endorsement of the views expressed in the report. This information is subject to change without any prior notice. The Company reserves the right to make modifications and alternations to this statement as may be required from time to time without any prior approval. MOFSL, its associates, their directors and the employees may from time to time, effect or have effected an own account transaction in, or deal as principal or agent in or for the securities mentioned in this document. They may perform or seek to perform investment banking or other services for, or solicit investment banking or other business from, any company referred to in this report. Each of these entities functions as a separate, distinct and independent of each other. The recipient should take this into account before interpreting the document. This report has been prepared on the basis of information that is already available in publicly accessible media or developed through analysis of MOFSL. The views expressed are those of the analyst, and the Company may or may not subscribe to all the views expressed therein. This document is being supplied to you solely for your information and may not be reproduced, redistributed or passed on, directly or indirectly, to any other person or published, copied, in whole or in part, for any purpose. This report is not directed or intended for distribution to, or use by, any person or entity who is a citizen or resident of or located in any locality, state, country or other jurisdiction, where such distribution, publication, availability or use would be contrary to law, regulation or which would subject MOFSL to any registration or licensing requirement within such jurisdiction. The securities described herein may or may not be eligible for sale in all jurisdictions or to certain category of investors. Persons in whose possession this document may come are required to inform themselves of and to observe such restriction. Neither the Firm, not its directors, employees, agents or representatives shall be liable for any damages whether direct or indirect, incidental, special or consequential including lost revenue or lost profits that may arise from or in connection with the use of the information. The person accessing this information specifically agrees to exempt MOFSL or any of its affiliates or employees from, any and all responsibility/liability arising from such misuse and agrees not to hold MOFSL or any of its affiliates or employees responsible for any such misuse and further agrees to hold MOFSL or any of its affiliates or employees free and harmless from all losses, costs, damages, expenses that may be` suffered by the person accessing this information due to any errors and delays.

This report is meant for the clients of Motilal Oswal only.

Investment in securities market are subject to market risks. Read all the related documents carefully before investing.

Registration granted by SEBI, enlistment as RA with Exchange and certification from NISM in no way guarantee performance of the intermediary or provide any assurance of returns to investors

Registered Office Address: Motilal Oswal Tower, Rahimtullah Sayani Road, Opposite Parel ST Depot, Prabhadevi, Mumbai-400025; Tel No.: 022 - 71934200 / 71934263; www.motilaloswal.com. Correspondence Address: Palm Spring Centre, 2nd Floor, Palm Court Complex, New Link Road, Malad (West), Mumbai- 400 064. Tel No: 022 71881000. Details of Compliance Officer: Neeraj Agarwal, Email Id: na@motilaloswal.com, Contact No.:022-40548085.

Grievance Redressal Cell:

Contact Person	Contact No.	Email ID
Ms. Hemangi Date	022 40548000 / 022 67490600	query@motilaloswal.com
Ms. Kumud Upadhyay	022 40548082	servicehead@motilaloswal.com
Mr. Ajay Menon	022 40548083	am@motilaloswal.com
Mr. Neeraj Agarwal	022 40548085	na@motilaloswal.com
Mr. Siddhartha Khemka	022 50362452	po.research@motilaloswal.com

Registration details of group entities.: Motilal Oswal Financial Services Ltd. (MOFSL): INZ000158836 (BSE/NSE/MCX/NCDEX); CDSL and NSDL: IN-DP-16-2015; Research Analyst: INH000000412, BSE enlistment no. 5028, AMFI registered Mutual Fund Distributor and SIF Distributor: ARN .: 146822. IRDA Corporate Agent – CA0579, APMI: APRN00233. Motilal Oswal Financial Services Ltd. is a distributor of Mutual Funds, PMS, Fixed Deposit, Insurance, Bond, NCDs and IPO products.

Customer having any query/feedback/ clarification may write to query@motilaloswal.com. In case of grievances for any of the services rendered by Motilal Oswal Financial Services Limited (MOFSL) write to grievances@motilaloswal.com, for DP to dpgrievances@motilaloswal.com.

Investment in securities market are subject to market risks, read all the related documents carefully before investing.