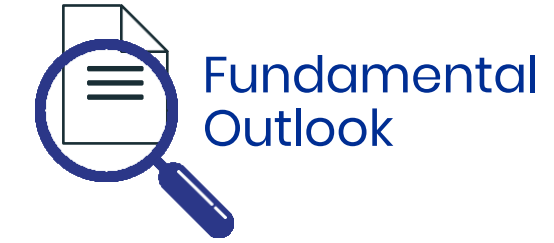




Solid Research
Solid Relationships

Fundamental Outlook

Global Market Setup



- US Markets had mixed close
- Dow closed **down by 0.5%** S& P was **down 0.08%** and Nasdaq ended **+0.35% higher**
- European markets ended mix with CAC & DAC **up ~0.96 & 1.11% respectively** & **while FTSE down 0.70%**
- Dow futures is currently trading **with gains of 0.34% (149 points up)**
- Asian markets are trading mix.

Global Cues: **Mix**

Indian Market Setup



8-Aug-25

- **Indian markets** opened on weak note after U.S. President Trump issued an executive order on Wednesday imposing an additional 25% tariff on India, over its continued purchases of Russian oil.
- Despite the negative start, benchmark index **Nifty** staged a V-shaped recovery, **climbing 252 points from its intra-day low to close higher by 22 points at 24,596 (+0.1%).**
- **Nifty Midcap100 and Smallcap100 were up 0.3% and 0.2%** respectively.
- **FIIs: -₹4,997cr; DIIs: +₹10,864cr**
- **GIFT Nifty is trading 50 points lower (-0.2%)**

Domestic Cues: Mix

Stocks in News



8-Aug-25

Bharti Airtel: Bharti Airtel Promoter Likely To Sell Rs 9,310-Crore Stake Via Block Deal. The offer price for the deal is set at Rs 1,862 per share, around 3.15% discount to the previous closing price of Rs 1,922.6 per share.

View: **Opportunity to Accumulate at lower levels**

Syrma SGS Technology: has approved a Qualified Institutional Placement to issue equity shares aiming to raise Rs 1,000 crore. The floor price for issue is at Rs.735.61.

View: **Positive**

Zydus Lifesciences: Zydus Receives Noc from Health Canada for Zds-Varenicline Tablets (Positive)

View: **Positive**

MSCI rebalancing - Swiggy, Vishal Mega Mart, Waaree Energies and Hitachi Energy India were added to the MSCI Global Standard Index in its August 2025 rebalancing,. The changes will take effect after market close on Aug. 26. Sona BLW Precision and Thermax were removed.

Results today: SBI, Tata Motors, Siemens, Grasim, Voltas, Info Edge etc

Fundamental Actionable Idea



8-Aug-25

Titan Ltd.

CMP ₹3416, TP ₹4150, 21% Upside, Buy, MTF Stock

- TTAN's consolidated revenue grew 25% YoY to INR165.2b (est. INR156.9b). Consolidated jewelry sales grew 24% YoY to INR146.5b (est. 140.0b) (ex-bullion sales grew by 20% to INR129.9b).
- Gross margin expanded 40bp YoY to 22.5% (est. 23.5%). EBITDA margin expanded 170bp YoY to 11.1% (est. 10.2%).
- TTAN, with its superior competitive positioning (in sourcing, studded ratio, youth-centric focus, and reinvestment strategy), continues to outperform other branded players. The brand recall and business moat are not easily replicable; therefore, Tanishq's competitive edge will remain strong in the category.
- We model a CAGR of 16%/19%/23% in revenue/EBITDA/PAT during FY25-27E. TTAN's valuation is rich, but it offers a long runway for growth with a superior execution track record.
- Reiterate BUY with a TP of INR4,150 (60x Jun'27 P/E).

View: Buy

Fundamental Actionable Idea



8-Aug-25

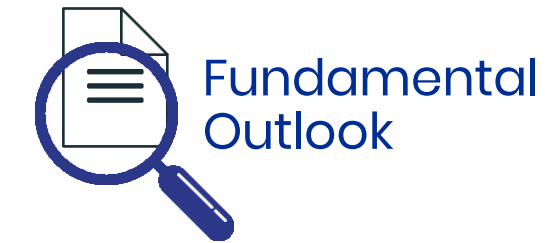
AU Small finance bank

CMP ₹743, TP ₹875, 15% Upside, Buy, **MTF Stock**

- RBI has granted in-principle approval to AU SFB (AUBANK) for its transition into a Universal Bank, marking a significant milestone in the bank's journey. **The universal bank license enhances brand positioning and is expected to help narrow the gap in deposit rates that AUBANK offers vs peers**
- Reiterate BUY with a TP of INR875; the RBI approval serves as a strong re-rating catalyst, improving growth visibility and investor appeal. Earnings recovery in earnings over 2H as credit cost subsides along with industry leading loan growth, a potential capital raise to support robust growth, and the RBI's approval of CEO's (Sanjay Agarwal) term renewal—due in Apr'26—are additional near-term catalysts that reinforce confidence in the bank's operational capabilities and long-term growth outlook.

View: Buy

Focus Investment Ideas



8-Aug-25

All Stocks Available in MTF

Duration : 1 Year Horizon

Stock Name	Rating	CMP (Rs)	Target (Rs)	Upside (%)
LT Foods	Buy	462	600	30%
Time Technoplast	Buy	450	578	28%
Kaynes Tech	Buy	6,095	7300	20%
ICICI Bank	Buy	1,441	1,650	15%
Vishal Mega Mart	Buy	145	165	14%

Investment in securities market are subject to market risks, read all the related documents carefully before investing.

Technical Outlook

Nifty Technical Outlook



8-Aug-25

NIFTY (CMP : 24596) Nifty immediate support is at 24442 then 24350 zones while resistance at 24750 then 24900 zones. Now if it manages to cross and hold above 24600 zones strength can be seen towards 24750 and 24900 zones, else weakness can be seen towards 24442 and 24350 zones.

1-Nifty50 - 07/08/25



Investment in securities market are subject to market risks, read all the related documents carefully before investing.

Bank Nifty Technical Outlook



8-Aug-25

BANK NIFTY (CMP : 55521) Bank Nifty support is at 55250 then 55000 zones while resistance at 55750 then 56000 zones. Now it has to hold above 55555 zones for a bounce towards 55750 then 56000 levels while a hold below the same could see some weakness towards 55250 then 55000 zones.

1-Niftybank - 07/08/25



Investment in securities market are subject to market risks, read all the related documents carefully before investing.

Sectoral Performance



Technical
Outlook

**motilal
oswal**

Wealth Management

8-Aug-25

	Closing	% Change			
Indices	07-Aug	1-day	2-days	3-days	5-days
NIFTY 50	24596	0.09%	-0.22%	-0.51%	-0.70%
NIFTY BANK	55521	0.20%	0.29%	-0.18%	-0.79%
NIFTY MIDCAP 100	56938	0.33%	-0.47%	-0.86%	-0.81%
NIFTY SMALLCAP 250	16753	-0.10%	-1.30%	-1.62%	-2.28%
NIFTY FINANCIAL SERVICES	26404	0.12%	0.12%	-0.27%	-0.92%
NIFTY PRIVATE BANK	26901	0.19%	0.10%	-0.20%	-0.68%
NIFTY PSU BANK	6909	0.29%	0.89%	0.73%	0.85%
NIFTY IT	34727	0.87%	-0.88%	-1.35%	-1.63%
NIFTY FMCG	55299	0.12%	-0.78%	-1.50%	-0.92%
NIFTY OIL & GAS	10997	-0.19%	-0.43%	-1.38%	-2.35%
NIFTY PHARMA	21685	0.75%	-1.30%	-2.12%	-4.77%
NIFTY AUTO	23808	0.25%	-0.29%	0.09%	0.64%
NIFTY METAL	9311	0.13%	-0.27%	-0.18%	0.27%
NIFTY REALTY	893	-0.13%	-1.64%	-2.09%	-2.12%
NIFTY INDIA DEFENCE	7800	-0.46%	-0.95%	-0.10%	0.30%
NIFTY CPSE	6326	-0.13%	-0.43%	-0.39%	-0.89%

Investment in securities market are subject to market risks, read all the related documents carefully before investing.

Technical Trading Idea

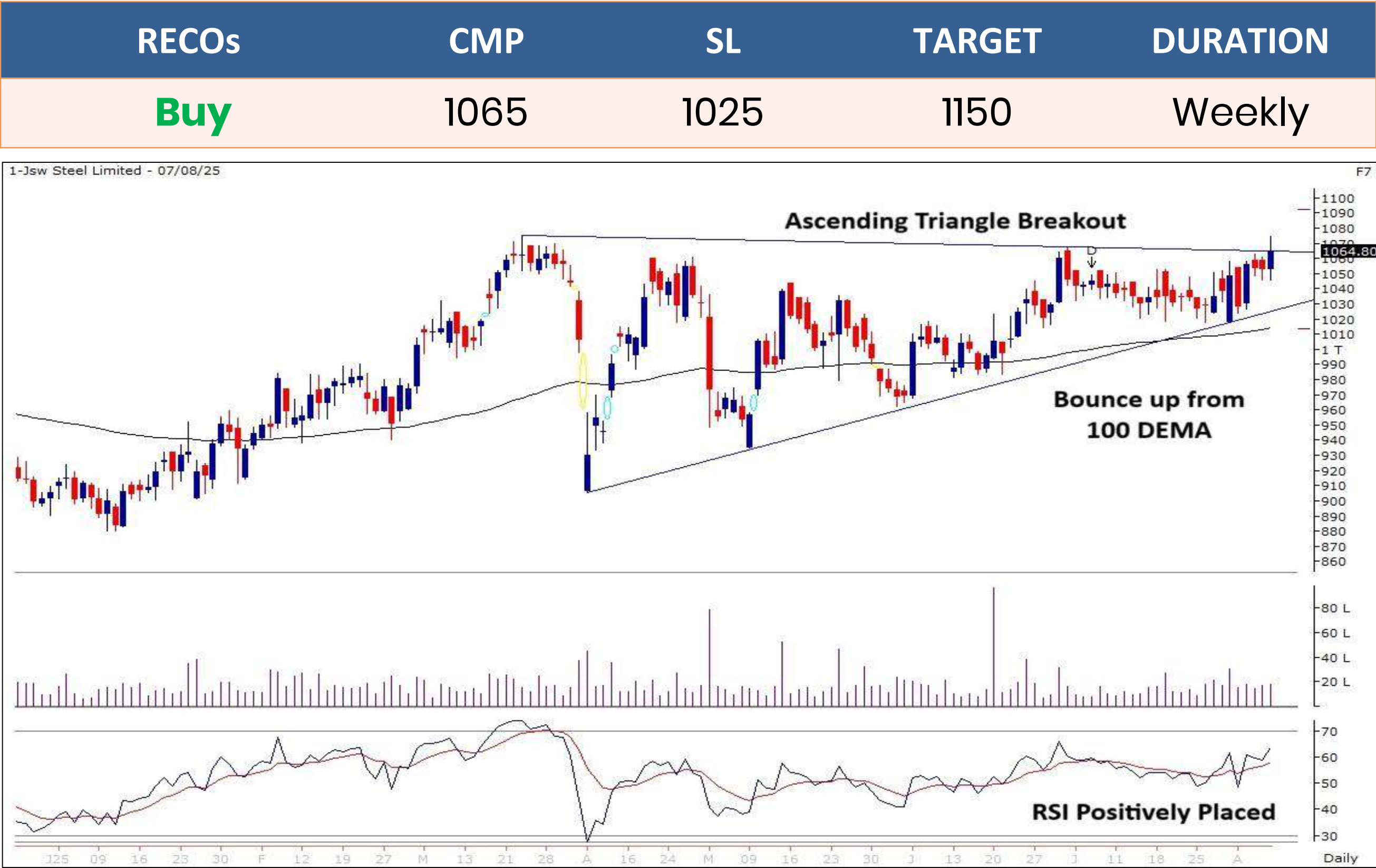
8-Aug-25

JSWSTEEL

(Mcap ₹ 2,60,392 Cr.)

F&O Stock, MTF Stock

- Breakout from “Ascending Triangle” pattern.
- Near “All Time High” zones.
- Bounce up from 100 DEMA.
- Rising volumes.
- RSI momentum indicator headed up.
- We recommend to buy the stock at CMP ₹1065 with a SL of ₹1025 and a TGT of ₹1150.



Stocks On Radar



Technical
Outlook

**motilal
oswal**
Wealth Management

TORNTPHARM

(CMP: 3797, Mcap ₹ 1,21,723 Cr.)

F&O Stock, MTF Stock

- Bullish Engulfing pattern.
- Retesting breakout zones.
- Respecting 20 DEMA support zones.
- RSI verge of bullish crossover.
- Immediate support at 3460.

INDIANB

(CMP: 647, Mcap ₹ 87,236 Cr.)

F&O Stock, MTF Stock

- Verge of range breakout above 658.
- Strong bullish candle.
- Respecting 100 DEMA support zones.
- RSI momentum indicator rising.
- Immediate support at 618.



Investment in securities market are subject to market risks, read all the related documents carefully before investing.

Derivative Outlook

Derivative Outlook



- Nifty August future closed at 24,673.40 with a premium of 77.25 point v/s 60.70 point premium in the last session.
- Nifty Put/Call Ratio (OI) increased from 0.74 to 1.06 level.
- India VIX decreased by 2.28% to 11.69 level.

FII Cash & Derivative Activity



8-Aug-25

- FIIs on Derivatives front : Short covering in Index Futures, position unwinding in index options.
- In the cash market : FIIs were net sellers to the tune of 5214 Cr while DIIs were net buyers worth 10760 Cr.
- FIIs long short ratio : Hovering near 8%

INSTITUTIONAL DERIVATIVES ACTIVITY

Change in OI in Future Index Long (in contracts)					Change in OI in Future Index Short (in contracts)					Change in OI in Future Stock Long (in contracts)					Change in OI in Future Stock Short (in contracts)				
Date	Client	DII	FII	Pro	Date	Client	DII	FII	Pro	Date	Client	DII	FII	Pro	Date	Client	DII	FII	Pro
01-Aug-25	17187	362	83	11100	01-Aug-25	5781	-1186	20607	3530	01-Aug-25	24656	4212	-5750	34834	01-Aug-25	14320	-17805	26785	34652
04-Aug-25	-2921	-46	809	326	04-Aug-25	-365	0	-425	-1042	04-Aug-25	-17720	4946	16902	-6603	04-Aug-25	3181	30895	-27929	-8622
05-Aug-25	8468	24	-140	5645	05-Aug-25	2798	-1700	11684	1215	05-Aug-25	34780	7551	-15846	-4860	05-Aug-25	-669	-12590	26032	8852
06-Aug-25	584	-11	220	229	06-Aug-25	4207	-437	-1463	-1285	06-Aug-25	9685	5489	-3173	14092	06-Aug-25	-929	2403	18893	5726
07-Aug-25	1270	1096	667	45	07-Aug-25	-3666	-1993	6835	1902	07-Aug-25	16195	2776	26975	10557	07-Aug-25	-6757	46163	13763	3334

Change in OI in Option Index Call Long (in contracts)					Change in OI in Option Index Call Short (in contracts)					Change in OI in Option Index Put Long (in contracts)					Change in OI in Option Index Put Short (in contracts)				
Date	Client	DII	FII	Pro	Date	Client	DII	FII	Pro	Date	Client	DII	FII	Pro	Date	Client	DII	FII	Pro
01-Aug-25	968178	0	96652	285365	01-Aug-25	866859	0	136729	346606	01-Aug-25	236538	0	84721	219109	01-Aug-25	346106	0	67461	126800
04-Aug-25	2865	0	8355	124094	04-Aug-25	193864	0	-22737	-35812	04-Aug-25	495729	0	-5401	166995	04-Aug-25	465365	0	27207	164753
05-Aug-25	383260	0	42959	55717	05-Aug-25	257934	0	36276	187725	05-Aug-25	43679	-5140	49927	-15032	05-Aug-25	47219	0	21419	4794
06-Aug-25	441219	0	61603	164399	06-Aug-25	339830	0	74653	252739	06-Aug-25	36821	10000	75517	68701	06-Aug-25	74240	0	10401	106399
07-Aug-25	-1499297	0	-161180	-545626	07-Aug-25	-1437221	0	-168266	-600617	07-Aug-25	-592900	-4251	-115579	-341432	07-Aug-25	-679344	0	-95546	-279271

Today's OI Changes (in contracts)										Cummulative Positions (in contracts)									
Clients	Index Futures			Index Calls			Index Puts			Clients	Index Futures			Index Calls			Index Puts		
	Long	Short	Net	Long	Short	Net	Long	Short	Net		Long	Short	Net	Long	Short	Net	Long	Short	Net
Clients	1270	-3666	4936	-1499297	-1437221	-62076	-592900	-679344	86444	Clients	209403	89593	119810	1532145	1464923	67222	1245912	1622163	-376251
DII	1096	-1993	3089	0	0	0	-4251	0	-4251	DII	64020	27088	36932	70	0	70	25383	0	25383
FII	667	6835	-6168	-161180	-168266	7086	-115579	-95546	-20033	FII	17977	191236	-173259	235441	281197	-45756	416437	174462	241975
Pro	45	1902	-1857	-545626	-600617	54991	-341432	-279271	-62161	Pro	46623	30106	16517	550235	571771	-21536	669788	560896	108892

FII Derivatives Activity		Index Long Short Ratio
Segment	Net Amount (in Cr)	
Index Futures	-1131	Clients 70.04%
Index Options	3874	DII 70.27%
Stock Futures	1240	FII 8.59%
Stock Options	-33	Pro 60.76%

Institutions Activity in Cash Segment - Net Value (in Cr)							
	07-Aug-25	06-Aug-25	05-Aug-25	04-Aug-25	01-Aug-25	31-Jul-25	30-Jul-25
FIIs	-5214.04	-4196.77	-2383.44	-2403.89	-2821.45	-5538.19	-942.43
DIIs	10760.13	5954.61	2788.87	4256.55	2718.41	6171	1805.1



Investments in securities markets are subject to market risks.
Please read all related documents carefully.

Investment in securities market are subject to market risks, read all the related documents carefully before investing.

Nifty : Option Data



8-Aug-25

- Maximum Call OI is at 24700 then 25000 strike while Maximum Put OI is at 24600 then 24500 strike.
- Call writing is seen at 24600 then 24700 strike while Put writing is seen at 24600 then 24500 strike.
- Option data suggests a broader trading range in between 24200 to 25200 zones while an immediate range between 24400 to 24900 levels.

Nifty 50 OI Chart(14 Aug 2025)



Investment in securities market are subject to market risks, read all the related documents carefully before investing.

Option - Buying side strategy




Index	Single Leg Buying	Multi Leg Strategy
Nifty (Weekly)	24750 CE if it cross & hold above 24600	Bull Call Spread (Buy 24600 CE and Sell 24750 CE) at net premium cost of 50-60 points
Sensex (Weekly)	81000 CE if it cross & holds above 80800	Bull Call Spread (Buy 81000 CE and Sell 81200 CE) at net premium cost of 70-80 points
Bank Nifty (Monthly)	Need to watch 55555 zones for directional Option buying in Bank Nifty.	Bull Call Spread (Buy 56000 CE and Sell 56500 CE) at net premium cost of 190-200 points

Option - Selling side strategy



8-Aug-25

Index	Writing
Nifty (Weekly)	24000 PE & 25200 CE
Sensex (Weekly)	78000 PE & 82700 CE
Bank Nifty (Monthly)	53500 PE & 58000 CE

Weekly Option Range for Option Writers based on Different Confidence Band								
Date		8-Aug-25	Weekly Expiry		14-Aug-25	Days to Weekly expiry		5
Nifty		24596	India VIX		11.7			
Confidence Band	Probability	% Away From Spot	Range				Total Premium (Put + Call)	Types of Trades
			Put	Premium	Call	Premium		
1.00	68%	± 1.2%	24300	30	24900	49	79	Aggressive
1.25	79%	± 1.4%	24250	24	24950	38	62	Less Aggressive
1.50	87%	± 1.6%	24200	21	25000	30	51	Neutral
1.75	92%	± 2.0%	24100	15	25100	18	33	Conservative
2.00	95%	± 2.2%	24050	13	25150	13	26	Most Conservative
Date		8-Aug-25	Monthly Expiry		28-Aug-25	Days to expiry		14
Bank Nifty		55521						
Confidence Band	Probability	% Away From Spot	Range				Total Premium (Put + Call)	Types of Trades
			Put	Premium	Call	Premium		
1.00	68%	± 2.2%	54300	140	56700	226	366	Aggressive
1.25	79%	± 2.7%	54000	106	57000	155	262	Less Aggressive
1.50	87%	± 3.3%	53700	79	57300	108	187	Neutral
1.75	92%	± 3.8%	53400	62	57600	77	139	Conservative
2.00	95%	± 4.4%	53100	48	57900	54	102	Most Conservative
Investments in securities markets are subject to market risks. Please read all related documents carefully.								

Investment in securities market are subject to market risks, read all the related documents carefully before investing.

Nifty Advance Decline & Ban update

Stocks in Ban:

PNBHOUSING

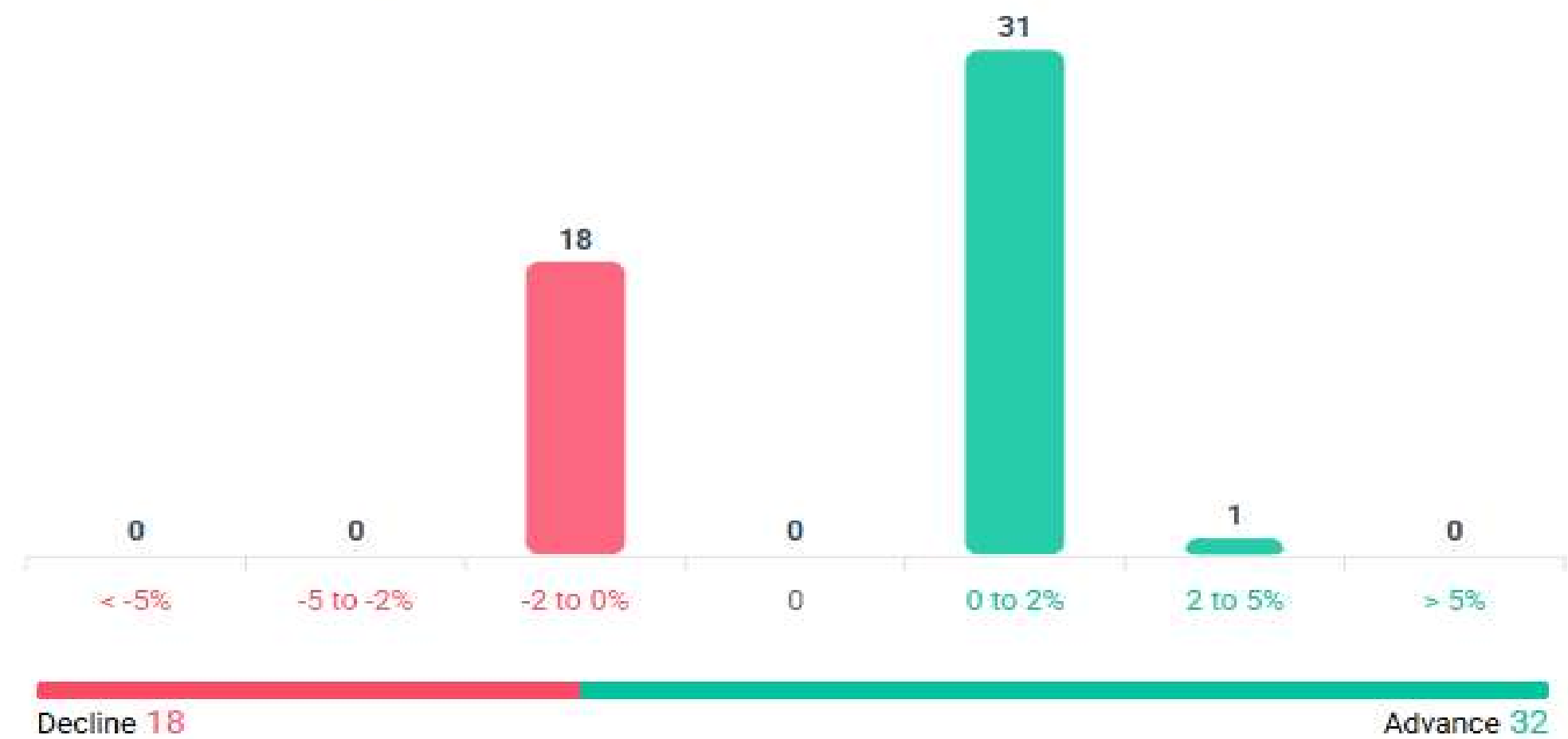
Advance & Decline

All FNO

Nifty 50

Bank Nifty

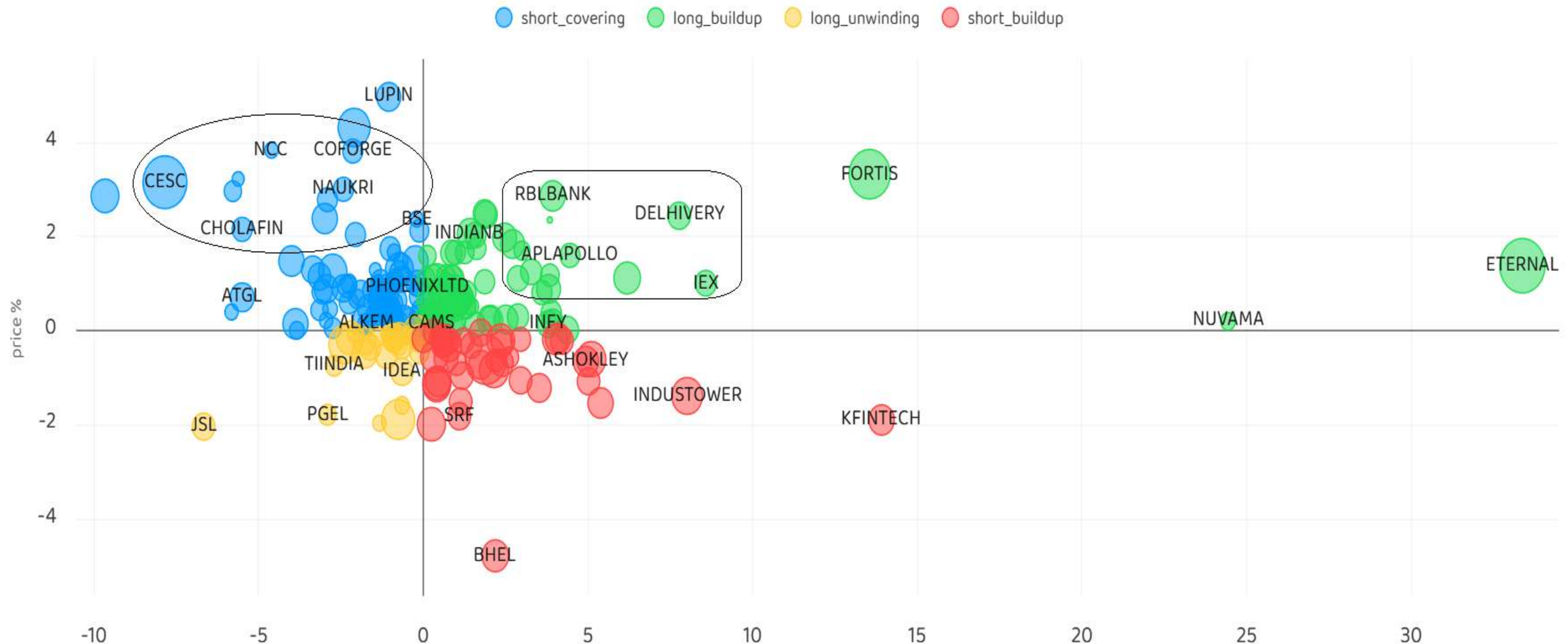
Fin Nifty



Stocks : Derivatives Outlook



8-Aug-25



Investment in securities market are subject to market risks, read all the related documents carefully before investing.

Stocks : Options on radar



Stock	Call Strike	Trade	Buying Range	SL	TGT	Logic
JSWSTEEL	1070 CE	Buy	29-30	25	38	Long Built up
TVSMOTOR	3000 CE	Buy	60-61	53	75	Long Built up
ASIANPAINT	2500 CE	Buy	49-50	39	70	Short Covering

Stock	Put Strike	Trade	Buying Range	SL	TGT	Logic
SRF	2900 PE	Buy	65-67	53	91	Short Built up
UNITDSPR	1300 PE	Buy	29-30	23	42	Short Built up

Quant Outlook

Quant Intraday Sell Ideas



What is this?

Based on technical indicators this strategy gives 2 stocks that have a high likelihood to fall during the day (from open to close). This is an intraday Sell strategy which can provide a good cushioning during a black swan event.

Today's **Sell** Ideas:

Stock Names	Close Price	SL (1%)	TP (1%)
DIVISLAB (Sell)	6131.5	6192.8	6070.2
INFY (Sell)	1436.9	1451.3	1422.5

What are the rules?

- Stock names will be given at market open (9:15 am)
- Recommended time to entry: between 9:15 to 9:30 am.
- Entry: We short 2 stocks daily (intraday)
- Exit: we will exit at 3:15 as this is an intraday call
- SL: is placed at 1% of the open.
- Book profit: At 1% fall since open.
- In special situations the book profit might be delayed if the stock is in free fall.

Siddhartha Khemka
Head – Retail Research

Chandan Taparria, CMT, CFTE
Head – Derivatives & Technical Analyst

Neil Jha
Head – Quant

Disclosures:

The following Disclosures are being made in compliance with the SEBI Research Analyst Regulations 2014 (herein after referred to as the Regulations).

Motilal Oswal Financial Services Ltd. (MOFSL) is a SEBI Registered Research Analyst having registration no. INH000000412. MOFSL, the Research Entity (RE) as defined in the Regulations, is engaged in the business of providing Stock broking services, Depository participant services & distribution of various financial products. MOFSL is a listed public company, the details in respect of which are available on www.motilaloswal.com. MOFSL is registered with the Securities & Exchange Board of India (SEBI) and is a registered Trading Member with National Stock Exchange of India Ltd. (NSE) and Bombay Stock Exchange Limited (BSE), Multi Commodity Exchange of India Limited (MCX) and National Commodity & Derivatives Exchange Limited (NCDEX) for its stock broking activities & is Depository participant with Central Depository Services Limited (CDSL) National Securities Depository Limited (NSDL),NERL, COMRIS and CCRL and is member of Association of Mutual Funds of India (AMFI) for distribution of financial products and Insurance Regulatory & Development Authority of India (IRDA) as Corporate Agent for insurance products. Details of associate entities of Motilal Oswal Financial Services Ltd. are available on the website at <http://onlinereports.motilaloswal.com/Dormant/documents/Associate%20Details.pdf>

Details of pending Enquiry Proceedings of Motilal Oswal Financial Services Limited are available on the website at <https://galaxy.motilaloswal.com/ResearchAnalyst/PublishViewLitigation.aspx>

MOFSL, its associates, Research Analyst or their relatives may have any financial interest in the subject company. MOFSL and/or its associates and/or Research Analyst or their relatives may have actual beneficial ownership of 1% or more securities in the subject company at the end of the month immediately preceding the date of publication of the Research Report or date of the public appearance. MOFSL and its associate company(ies), their directors and Research Analyst and their relatives may have any other potential conflict of interests at the time of publication of the research report or at the time of public appearance, however the same shall have no bearing whatsoever on the specific recommendations made by the analyst(s), as the recommendations made by the analyst(s) are completely independent of the views of the associates of MOFSL even though there might exist an inherent conflict of interest in some of the stocks mentioned in the research report..

In the past 12 months, MOFSL or any of its associates may have:

- a. Received any compensation/other benefits from the subject company of this report
- b. Managed or co managed public offering of securities from subject company of this research report,
- c. Received compensation for investment banking or merchant banking or brokerage services from subject company of this research report,
- d. Received compensation for products or services other than investment banking or merchant banking or brokerage services from the subject company of this research report.
- MOFSL and its associates have not received any compensation or other benefits from the subject company or third party in connection with the research report.
- Subject Company may have been a client of MOFSL or its associates during twelve months preceding the date of distribution of the research report.
- Research Analyst may have served as director/officer/employee in the subject company.
- MOFSL and research analyst may engage in market making activity for the subject company.

MOFSL and its associate company(ies), and Research Analyst and their relatives from time to time may

a) a long or short position in, act as principal in, and buy or sell the securities or derivatives thereof of companies mentioned herein.

(b) be engaged in any other transaction involving such securities and earn brokerage or other compensation or act as a market

maker in the financial instruments of the company(ies) discussed herein or act as an advisor or lender/borrower to such ies) or may have any other potential conflict of interests with respect to any recommendation and other related information and opinions.; however the same shall have no bearing whatsoever on the specific recommendations made by the analyst(s), as the recommendations made by the analyst (are completely independent of the views of the associates of MOFSL even though there might exist an inherent conflict of interest in some of the stocks mentioned in the research report.

Above disclosures include beneficial holdings lying in demat account of MOFSL which are opened for proprietary investments only. While calculating beneficial holdings, It does not consider demat accounts which are opened in name of MOFSL for other purposes (i.e holding client securities, collaterals, error trades etc.). MOFSL also earns DP income from clients which are not considered in above disclosures.

To enhance transparency, MOFSL has incorporated a Disclosure of Interest Statement in this document. This should, however, not be treated as endorsement of the views expressed in the report. MOFSL and / or its affiliates do and seek to do business including investment banking with companies covered in its research reports. As a result, the recipients of this report should be aware that MOFSL may have a potential conflict of interest that may affect the objectivity of this report.

Terms & Conditions:

This report has been prepared by MOFSL and is meant for sole use by the recipient and not for circulation. The report and information contained herein is strictly confidential and may not be altered in any way, transmitted to, copied or distributed, in part or in whole, to any other person or to the media or reproduced in any form, without prior written consent of MOFSL. The report is based on the facts, figures and information that are considered true, correct, reliable and accurate. The intent of this report is not recommendatory in nature. The information is obtained from publicly available media or other sources believed to be reliable. Such information has not been independently verified and no guaranty, representation of warranty, express or implied, is made as to its accuracy, completeness or correctness. All such information and opinions are subject to change without notice. The report is prepared solely for informational purpose and does not constitute an offer document or solicitation of offer to buy or sell or subscribe for securities or other financial instruments for the clients. Though disseminated to all the customers simultaneously, not all customers may receive this report at the same time. MOFSL will not treat recipients as customers by virtue of their receiving this report.

Analyst Certification

The views expressed in this research report accurately reflect the personal views of the analyst(s) about the subject securities or issues, and no part of the compensation of the research analyst(s) was, is, or will be directly or indirectly related to the specific recommendations and views

expressed by research analyst(s) in this report. Disclosure of Interest Statement

Analyst ownership of the stock No

A graph of daily closing prices of securities is available at www.nseindia.com, www.bseindia.com. Research Analyst views on Subject Company may vary based on Fundamental research and Technical Research. Proprietary trading desk of MOFSL or its associates maintains arm’s length distance with Research Team as all the activities are segregated from MOFSL research activity and therefore it can have an independent view with regards to subject company for which Research Team have expressed their views.

Regional Disclosures (outside India)

This report is not directed or intended for distribution to or use by any person or entity resident in a state, country or any jurisdiction, where such distribution, publication, availability or use would be contrary to law, regulation or which would subject MOFSL & its group companies to registration or licensing requirements within such jurisdictions. For Hong Kong:

This report is distributed in Hong Kong by Motilal Oswal capital Markets (Hong Kong) Private Limited, a licensed corporation (CE AYY 301) licensed and regulated by the Hong Kong Securities and Futures Commission (SFC) pursuant to the Securities and Futures Ordinance (Chapter 571 of the Laws of Hong Kong) “SFO”. As per SEBI (Research Analyst Regulations) 2014 Motilal Oswal Financial Services Limited (SEBI Reg No. INH000000412) has an agreement with Motilal Oswal capital Markets (Hong Kong) Private Limited for distribution of research report in Hong Kong. This report is intended for distribution only to “Professional Investors” as defined in Part I of Schedule 1 to SFO. Any investment or investment activity to which this document relates is only available to professional investor and will be engaged only with professional investors.” Nothing here is an offer or solicitation of these securities, products and services in any jurisdiction where the offer or sale is not qualified or exempt from registration. The Indian Analyst(s) who compile this report is/are not located in Hong Kong & are not conducting Research Analysis in Hong Kong.

Investment in securities market are subject to market risks, read all the related documents carefully before investing.

For U.S.

MOTILAL Oswal Financial Services Limited (MOFSL) is not a registered broker - dealer under the U.S. Securities Exchange Act of 1934, as amended (the"1934 act") and under applicable state laws in the United States. In addition MOFSL is not a registered investment adviser under the U.S. Investment Advisers Act of 1940, as amended (the "Advisers Act" and together with the 1934 Act, the "Acts), and under applicable state laws in the United States. Accordingly, in the absence of specific exemption under the Acts, any brokerage and investment services provided by MOFSL, including the products and services described herein are not available to or intended for U.S. persons. This report is intended for distribution only to "Major Institutional Investors" as defined by Rule 15a-6(b)(4) of the Exchange Act and interpretations thereof by SEC (henceforth referred to as "major institutional investors"). This document must not be acted on or relied on by persons who are not major institutional investors. Any investment or investment activity to which this document relates is only available to major institutional investors and will be engaged in only with major institutional investors. In reliance on the exemption from registration provided by Rule 15a-6 of the U.S. Securities Exchange Act of 1934, as amended (the "Exchange Act") and interpretations thereof by the U.S. Securities and Exchange Commission ("SEC") in order to conduct business with Institutional Investors based in the U.S., MOFSL has entered into a chaperoning agreement with a U.S. registered broker-dealer, Motilal Oswal Securities International Private Limited. ("MOSIPL"). Any business interaction pursuant to this report will have to be executed within the provisions of this chaperoning agreement.

The Research Analysts contributing to the report may not be registered /qualified as research analyst with FINRA. Such research analyst may not be associated persons of the U.S. registered broker-dealer, MOSIPL, and therefore, may not be subject to NASD rule 2711 and NYSE Rule 472 restrictions on communication with a subject company, public appearances and trading securities held by a research analyst account.

For Singapore

In Singapore, this report is being distributed by Motilal Oswal Capital Markets Singapore Pte Ltd (“MOCMSPL”) (Co.Reg. NO. 201129401Z) which is a holder of a capital markets services license and an exempt financial adviser in Singapore, as per the approved agreement under Paragraph 9 of Third Schedule of Securities and Futures Act (CAP 289) and Paragraph 11 of First Schedule of Financial Advisors Act (CAP 110) provided to MOCMSPL by Monetary Authority of Singapore. Persons in Singapore should contact MOCMSPL in respect of any matter arising from, or in connection with this report/publication/communication. This report is distributed solely to persons who qualify as “Institutional Investors”, of which some of whom may consist of "accredited" institutional investors as defined in section 4A(1) of the Securities and Futures Act, Chapter 289 of Singapore (“the SFA”).

Accordingly, if a Singapore person is not or ceases to be such an institutional investor, such Singapore Person must immediately discontinue any use of this Report and inform MOCMSPL.

Disclaimer:

This report is intended for distribution to Retail Investors.

The report and information contained herein is strictly confidential and meant solely for the selected recipient and may not be altered in any way, transmitted to, copied or distributed, in part or in whole, to any other person or to the media or reproduced in any form, without prior written consent. This report and information herein is solely for informational purpose and may not be used or considered as an offer document or solicitation of offer to buy or sell or subscribe for securities or other financial instruments. Nothing in this report constitutes investment, legal, accounting and tax advice or a representation that any investment or strategy is suitable or appropriate to your specific circumstances. The securities discussed and opinions expressed in this report may not be suitable for all investors, who must make their own investment decisions, based on their own investment objectives, financial positions and needs of specific recipient. This may not be taken in substitution for the exercise of independent judgment by any recipient. Each recipient of this document should make such investigations as it deems necessary to arrive at an independent evaluation of an investment in the securities of companies referred to in this document (including the merits and risks involved), and should consult its own advisors to determine the merits and risks of such an investment. The investment discussed or views expressed may not be suitable for all investors. Certain transactions -including those involving futures, options, another derivative products as well as non-investment grade securities - involve substantial risk and are not suitable for all investors. No representation or warranty, express or implied, is made as to the accuracy, completeness or fairness of the information and opinions contained in this document. The Disclosures of Interest Statement incorporated in this document is provided solely to enhance the transparency and should not be treated as endorsement of the views expressed in the report. This information is subject to change without any prior notice. The Company reserves the right to make modifications and alternations to this statement as may be required from time to time without any prior approval. MOFSL, its associates, their directors and the employees may from time to time, effect or have effected an own account transaction in, or deal as principal or agent in or for the securities mentioned in this document. They may perform or seek to perform investment banking or other services for, or solicit investment banking or other business from, any company referred to in this report. Each of these entities functions as a separate, distinct and independent of each other. The recipient should take this into account before interpreting the document. This report has been prepared on the basis of information that is already available in publicly accessible media or developed through analysis of MOFSL. The views expressed are those of the analyst, and the Company may or may not subscribe to all the views expressed therein. This document is being supplied to you solely for your information and may not be reproduced, redistributed or passed on, directly or indirectly, to any other person or published, copied, in whole or in part, for any purpose. This report is not directed or intended for distribution to, or use by, any person or entity who is a citizen or resident of or located in any locality, state, country or other jurisdiction, where such distribution, publication, availability or use would be contrary to law, regulation or which would subject MOFSL to any registration or licensing requirement within such jurisdiction. The securities described herein may or may not be eligible for sale in all jurisdictions or to certain category of investors. Persons in whose possession this document may come are required to inform themselves of and to observe such restriction. Neither the Firm, not its directors, employees, agents or representatives shall be liable for any damages whether direct or indirect, incidental, special or consequential including lost revenue or lost profits that may arise from or in connection with the use of the information. The person accessing this information specifically agrees to exempt MOFSL or any of its affiliates or employees from, any and all responsibility/liability arising from such misuse and agrees not to hold MOFSL or any of its affiliates or employees responsible for any such misuse and further agrees to hold MOFSL or any of its affiliates or employees free and harmless from all losses, costs, damages, expenses that may be suffered by the person accessing this information due to any errors and delays.

This report is meant for the clients of Motilal Oswal only.

Investment in securities market are subject to market risks. Read all the related documents carefully before investing.

Registration granted by SEBI and certification from NISM in no way guarantee performance of the intermediary or provide any assurance of returns to investors.

Registered Office Address: Motilal Oswal Tower, Rahimtullah Sayani Road, Opposite Parel ST Depot, Prabhadevi, Mumbai-400025; Tel No.: 022 - 71934200 / 71934263; www.motilaloswal.com. Correspondence Address: Palm Spring Centre, 2nd Floor, Palm Court Complex, New Link Road, Malad (West), Mumbai- 400 064. Tel No: 022 71881000. Details of Compliance Officer: Neeraj Agarwal, Email Id: na@motilaloswal.com, Contact No.:022-40548085.

Grievance Redressal Cell:

Contact Person	Contact No.	Email ID
Ms. Hemangi Date	022 40548000 / 022 67490600	query@motilaloswal.com
Ms. Kumud Upadhyay	022 40548082	servicehead@motilaloswal.com
Mr. Ajay Menon	022 40548083	am@motilaloswal.com

Registration details of group entities.: Motilal Oswal Financial Services Ltd. (MOFSL): INZ000158836 (BSE/NSE/MCX/NCDEX); CDSL and NSDL: IN-DP-16-2015; Research Analyst: INH000000412 . AMFI: ARN .: 146822. IRDA Corporate Agent – CA0579. Motilal Oswal Financial Services Ltd. is a distributor of Mutual Funds, PMS, Fixed Deposit, Insurance, Bond, NCDs and IPO products.

Customer having any query/feedback/ clarification may write to query@motilaloswal.com. In case of grievances for any of the services rendered by Motilal Oswal Financial Services Limited (MOFSL) write to grievances@motilaloswal.com, for DP to dpgrievances@motilaloswal.com.