



**Solid Research**  
**Solid Relationships**

# Fundamental Outlook

# Global Market Summary



- **US markets gained ~0.5-1%**, with **S&P 500** and **Nasdaq** closing at all-time high, as hopes for a trade deal fueled investor risk appetite and concerns of U.S. jobs data helped solidify expectations for rate cuts from the U.S. Federal Reserve.
- **Dow Jones gained +1%, Nasdaq up +0.5% while S&P500 ended +0.5%**
- **European markets gained 1-2%**
- **Dow futures is currently trading 0.6% higher (268 points up)**
- **Most Asian markets are mostly trading in green**

**Global Cues: Positive**

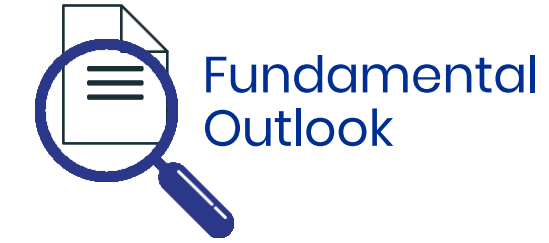
# Indian Market Summary



- **Indian equities** extended gains for the fourth consecutive day, amid continued market momentum and strong FII inflows.
- **Nifty50** closed **higher by 86 points at 25,635 (+0.3%)**.
- **Nifty Midcap100 and Smallcap100 were up by 0.3% and 0.9% respectively.**
- **FIIs: +₹1,397cr; DIIs -₹589cr**
- **GIFT Nifty** is trading **flat**

**Domestic Cues: Positive**

# News & Impact



**BHEL:** Bharat Heavy Electricals (BHEL) has received a letter of award worth Rs 6,500 crore from Adani Power. The order is for the supply of equipment—including steam turbine generators and auxiliaries—and for supervision of erection and commissioning of six 800 MW thermal units.

**Impact:** Positive

**Aurobindo Pharma:** Aurobindo Pharma announces restart of Penicillin-G production at Kakinada plant post receipt of 'consent to operate' from Andhra Pradesh Pollution Control Board.

**Impact:** Positive

**Prestige Estates:** Prestige Estates and Arihant Group have agreed to jointly acquire a 3.48-acre parcel in Velachery, Chennai, via their JV, Canopy Living LLP. The project spans approximately 7.5 lakh square feet, with a gross development value of over Rs 1,600 crore.

**Impact:** Positive

# Actionable Idea



## Torrent Pharma CMP ₹3341, MTF Stock

- Torrent Pharma (TRP) is set to acquire a controlling stake in JB Chemicals and Pharmaceuticals (JBCP). The deal is at an equity valuation of ₹256b (on a fully diluted basis).
- With this acquisition, TRP would have access to a fast-growing domestic formulation (DF) business with a healthy share of the chronic portfolio. In addition, TRP would garner the international CDMO business of JBCP.
- The valuation of JBCP would be 30.7x FY26E earnings and 27x FY27E earnings, assuming an 18% earnings CAGR over FY25-27. On an EV/EBITDA basis, it would be at 22x FY26E EBITDA and 19x FY27E EBITDA.
- Considering the strong brand franchise of JBCP with an established 2,800+ field force and lower valuation of JBCP compared to that of TRP (47x FY26 earnings/38x FY27 earnings), we believe the acquisition to be value accretive for TRP over the medium to long term.
- Ex-JBCP, we expect TRP to deliver 12%/14%/23% revenue/EBITDA/PAT CAGR over FY25-27.

**View: Positive**

# Actionable Idea



30-Jun-25

**HPCL**

**CMP ₹ 440, MTF Stock**

- Decline in crude prices once again to ~₹65/barrel is likely to drive improvement in margins of OMCs.
- We continue to prefer HPCL among OMCs due to the following factors: 1) HPCL's higher leverage toward the marketing segment, 2) higher dividend yield as HPCL's capex cycle is tapering off, and 3) start-up of HPCL's multiple mega-projects in the next 12 months providing a push to earnings.
- We view the following as key catalysts for the stock: 1) the de-merger and potential listing of the lubricant business, 2) the commissioning of its bottom upgrade unit in 2QCY26, 3) the start of its Rajasthan refinery in FY26, and 4) LPG under-recovery compensation.

**View: Buy**

# Focus Ideas for the Month



Fundamental  
Outlook

30-Jun-25

All Stocks Available in MTF

Duration : 1 Year Horizon

Stock Name	Rating	CMP (Rs)	Target (Rs)	Upside (%)
Prince Pipes	Buy	358	500	40%
Time Technoplast	Buy	445	578	30%
Niva Bupa	Buy	82	100	22%
Hindustan Aeronautics	Buy	4,895	5,650	15%
ICICI Bank	Buy	1,458	1,650	13%

Investment in securities market are subject to market risks, read all the related documents carefully before investing.

# Technical Outlook

# Nifty Technical Outlook



30-Jun-25

**NIFTY (CMP : 25637)** Nifty immediate support is at 25500 then 25350 zones while resistance at 25850 then 26000 zones. Now it has to hold above 25500, for an up move towards 25850 and 26000 zones while supports have shifted higher to 25500 then 25350 zones.

1-Nifty50 - 27/06/25



Investment in securities market are subject to market risks, read all the related documents carefully before investing.

# Bank Nifty Technical Outlook



30-Jun-25

**BANK NIFTY (CMP : 57443)** Bank Nifty support is at 57250 then 57000 zones while resistance at 58000 then 58500 zones. Now it has to hold above 57250 zones for an up move towards new life high territory towards 58000 then 58500 levels while on the downside support is seen at 57250 then 57000 zones.

1-Niftybank - 27/06/25



Investment in securities market are subject to market risks, read all the related documents carefully before investing.

# Sectoral Performance



Technical  
Outlook

**motilal  
oswal**

Wealth Management

30-Jun-25

	Closing	% Change			
Indices	27-Jun	1-day	2-days	3-days	5-days
NIFTY 50	25638	0.35%	1.56%	2.37%	2.09%
NIFTY BANK	57444	0.41%	1.45%	1.74%	2.12%
NIFTY MIDCAP 100	59385	0.27%	0.86%	1.30%	2.40%
NIFTY SMALLCAP 250	17642	0.81%	1.07%	2.69%	4.29%
➔ NIFTY FINANCIAL SERVICES	27344	0.35%	1.84%	2.22%	2.61%
NIFTY PRIVATE BANK	28506	0.31%	1.35%	1.32%	1.88%
NIFTY PSU BANK	7016	0.47%	0.90%	1.10%	2.49%
NIFTY IT	38823	-0.44%	-0.57%	1.05%	-0.43%
NIFTY FMCG	55109	-0.02%	0.66%	1.40%	0.88%
➔ NIFTY OIL & GAS	11835	1.19%	3.07%	3.32%	3.25%
➔ NIFTY PHARMA	21929	0.55%	0.57%	1.18%	1.46%
NIFTY AUTO	24008	0.19%	0.76%	1.74%	1.39%
NIFTY METAL	9578	0.35%	2.67%	3.09%	4.81%
NIFTY REALTY	994	-1.55%	-2.53%	-2.00%	-1.94%
NIFTY INDIA DEFENCE	8788	0.86%	1.23%	-0.79%	-1.13%
NIFTY CPSE	6621	0.41%	1.36%	0.85%	0.41%

Investment in securities market are subject to market risks, read all the related documents carefully before investing.

# Technical Trading Idea

30-Jun-25

## LAURUSLABS

(Mcap ₹ 37,845 Cr.)

F&O Stock, MTF Stock

- Consolidation breakout at “All Time High” Zones.
- Strong bullish candle.
- Respecting 50 DEMA support zones.
- Rising traded volumes.
- RSI momentum indicator positively placed.
- We recommend to buy the stock at CMP ₹701 with a SL of ₹680 and a TGT of ₹750.

RECOs	CMP	SL	TARGET	DURATION
Buy	701	680	750	Weekly



Investment in securities market are subject to market risks, read all the related documents carefully before investing.

# Stocks On Radar

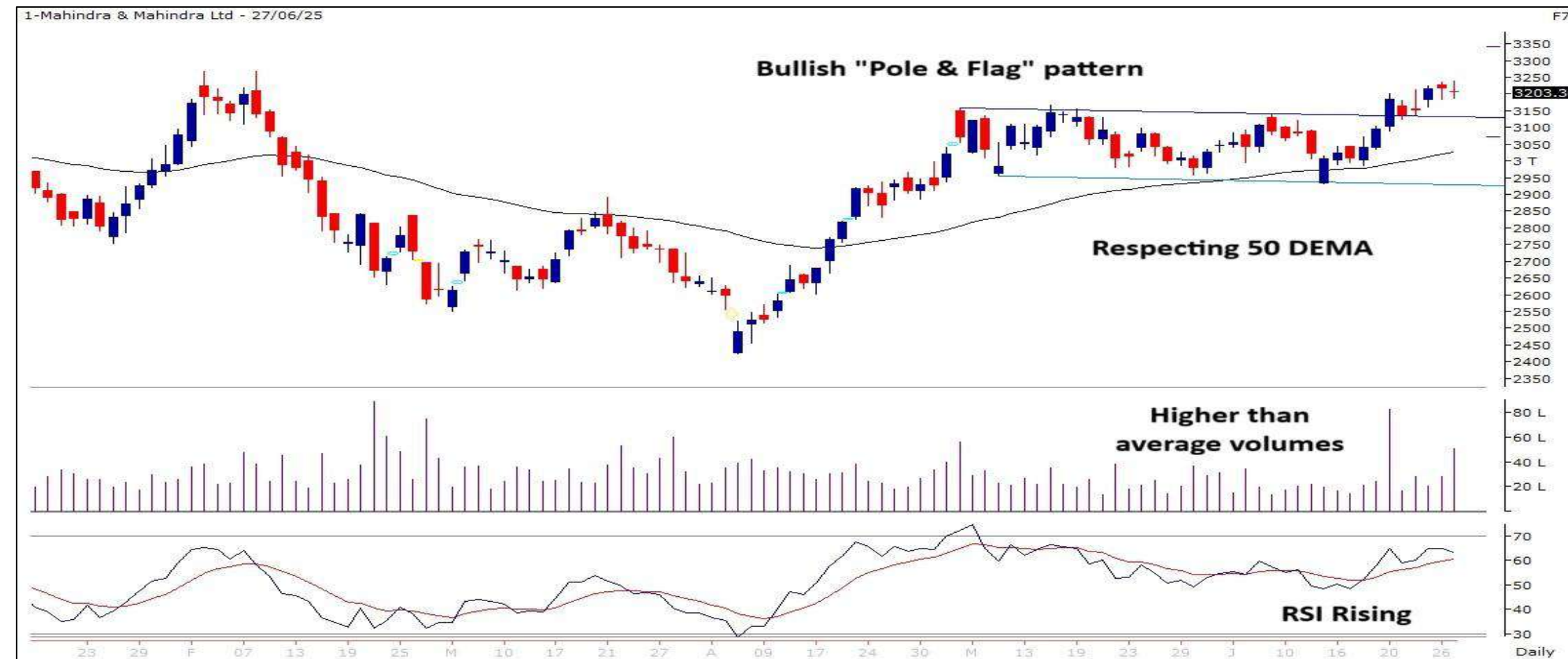
30-Jun-25

## M&M

(CMP: 3203 , Mcap ₹ 3,98,340 Cr.)

F&O Stock, MTF Stock

- Bullish “Pole & Flag” Pattern.
- Respecting 50 DEMA.
- Higher than average traded volumes.
- RSI momentum indicator rising.
- Immediate support at 3100.



## SHRIRAMFIN

(CMP: 700, Mcap ₹ 1,31,627 Cr.)

F&O Stock, MTF Stock

- Symmetrical Triangle Breakout.
- Respecting its 50 DEMA.
- Rising volumes visible.
- MACD indicator giving bullish crossover.
- Immediate support at 682.



Investment in securities market are subject to market risks, read all the related documents carefully before investing.

# Derivative Outlook

# Derivative Outlook



30-Jun-25

- Nifty July future closed at 25750.20 with a premium of 112.4 point v/s 66 point premium in the last session.
- Nifty Put/Call Ratio (OI) decreased from 1.28 to 1.25 level.
- India VIX decreased by 1.61% to 12.39 level.

# FII Cash & Derivative Activity



30-Jun-25

- FIIs on Derivatives front : Long built up in index futures, call and put selling in index options.
- In the cash market : FIIs were net buyers to the tune of 1504 Cr while DIIs were net sellers worth 765 Cr.
- FIIs long short ratio : Increased to 38.44%

## INSTITUTIONAL DERIVATIVES ACTIVITY

Change in OI in Future Index Long (in contracts)					Change in OI in Future Index Short (in contracts)					Change in OI in Future Stock Long (in contracts)					Change in OI in Future Stock Short (in contracts)				
Date	Client	DII	FII	Pro	Date	Client	DII	FII	Pro	Date	Client	DII	FII	Pro	Date	Client	DII	FII	Pro
23-Jun-25	169	-1145	-1070	-5468	23-Jun-25	-10076	-3016	5269	309	23-Jun-25	6680	3796	-54294	-19891	23-Jun-25	-3316	16984	-69422	-7955
24-Jun-25	2056	-3192	3477	6857	24-Jun-25	-1742	-5274	10241	5973	24-Jun-25	-24554	4818	14235	-16520	24-Jun-25	-17139	-13917	-4713	13748
25-Jun-25	-7514	-1574	310	16180	25-Jun-25	8355	2500	-2291	-1162	25-Jun-25	-59133	780	-13949	-59327	25-Jun-25	-14652	-54685	-54542	-7750
26-Jun-25	-34947	444	8452	-30762	26-Jun-25	1933	2652	-63451	2053	26-Jun-25	-195288	-150988	-164186	-197774	26-Jun-25	-82196	-214666	-211891	-199483
27-Jun-25	4079	2382	799	3054	27-Jun-25	6779	1700	-650	2485	27-Jun-25	29673	6260	14611	28373	27-Jun-25	18622	54520	-16727	22502

Change in OI in Option Index Call Long (in contracts)					Change in OI in Option Index Call Short (in contracts)					Change in OI in Option Index Put Long (in contracts)					Change in OI in Option Index Put Short (in contracts)				
Date	Client	DII	FII	Pro	Date	Client	DII	FII	Pro	Date	Client	DII	FII	Pro	Date	Client	DII	FII	Pro
23-Jun-25	424599	0	7958	28933	23-Jun-25	392485	0	-16060	85064	23-Jun-25	146269	7600	54824	-25714	23-Jun-25	232989	0	6130	-56138
24-Jun-25	423203	0	42551	257584	24-Jun-25	361770	0	142860	218708	24-Jun-25	39827	1700	-19477	41924	24-Jun-25	-6136	0	64500	5609
25-Jun-25	-242920	0	57633	29182	25-Jun-25	-147327	0	-21492	12715	25-Jun-25	519433	0	125912	257069	25-Jun-25	553231	0	77278	271905
26-Jun-25	-1440282	0	-400117	-822086	26-Jun-25	-1666670	0	-316000	-679816	26-Jun-25	-1445485	-10204	-443344	-697501	26-Jun-25	-1603152	0	-339224	-654159
27-Jun-25	396244	0	40335	242037	27-Jun-25	478416	0	70728	129473	27-Jun-25	567453	3400	26292	184394	27-Jun-25	535376	0	62787	183377

Today's OI Changes (in contracts)										Cummulative Positions (in contracts)									
Clients	Index Futures			Index Calls			Index Puts			Clients	Index Futures			Index Calls			Index Puts		
	Long	Short	Net	Long	Short	Net	Long	Short	Net		Long	Short	Net	Long	Short	Net	Long	Short	Net
Clients	4079	6779	-2700	396244	478416	-82172	567453	535376	32077	Clients	148580	132231	16349	1388749	1725562	-336813	1952303	2081252	-128949
DII	2382	1700	682	0	0	0	3400	0	3400	DII	78508	49599	28909	70	0	70	18383	0	18383
FII	799	-650	1449	40335	70728	-30393	26292	62787	-36495	FII	55702	89220	-33518	355675	312628	43047	393527	353081	40446
Pro	3054	2485	569	242037	129473	112564	184394	183377	1017	Pro	28155	39895	-11740	840691	546995	293696	825903	755783	70120

FII Derivatives Activity		Index Long Short Ratio	
Segment	Net Amount (in Cr)		
Index Futures	291	Clients	52.91%
Index Options	-12052	DII	61.28%
Stock Futures	919	FII	38.44%
Stock Options	-5429	Pro	41.37%

Institutions Activity in Cash Segment - Net Value (in Cr)							
	27-Jun-25	26-Jun-25	25-Jun-25	24-Jun-25	23-Jun-25	20-Jun-25	19-Jun-25
FIIs	1504.93	12692.56	-2306.1	-2973.24	-1977.06	7704.37	1008.43
DIIs	-765.82	-421.34	2018.14	4303.08	3228.5	-3657.7	365.68



Investments in securities markets are subject to market risks.  
Please read all related documents carefully.

Investment in securities market are subject to market risks, read all the related documents carefully before investing.

# Nifty : Option Data



30-Jun-25

- Maximum Call OI is at 25600 then 26000 strike while Maximum Put OI is at 25500 then 25000 strike.
- Call writing is seen at 25900 then 26000 strike while Put writing is seen at 25600 then 25500 strike.
- Option data suggests a broader trading range in between 25000 to 26000 zones while an immediate range between 25400 to 25800 levels.

Nifty 50 OI Chart(03 Jul 2025)



Investment in securities market are subject to market risks, read all the related documents carefully before investing.

# Option - Buying side strategy



30-Jun-25

Index	Single Leg Buying	Multi Leg Strategy
<b>Nifty</b> (Weekly)	25700 CE till it holds above 25500	Bull Call Spread (Buy 25700 CE and Sell 25900 CE) at net premium cost of 60-70 points
<b>Sensex</b> (Weekly)	84200 CE till it holds above 83700	Bull Call Spread (Buy 84200 CE and Sell 84400 CE) at net premium cost of 70-80 points
<b>Bank Nifty</b> (Monthly)	59000 CE till it holds above 57250	Bull Call Spread (Buy 58000 CE and Sell 58500 CE) at net premium cost of 210-220 points

# Option - Selling side strategy



30-Jun-25

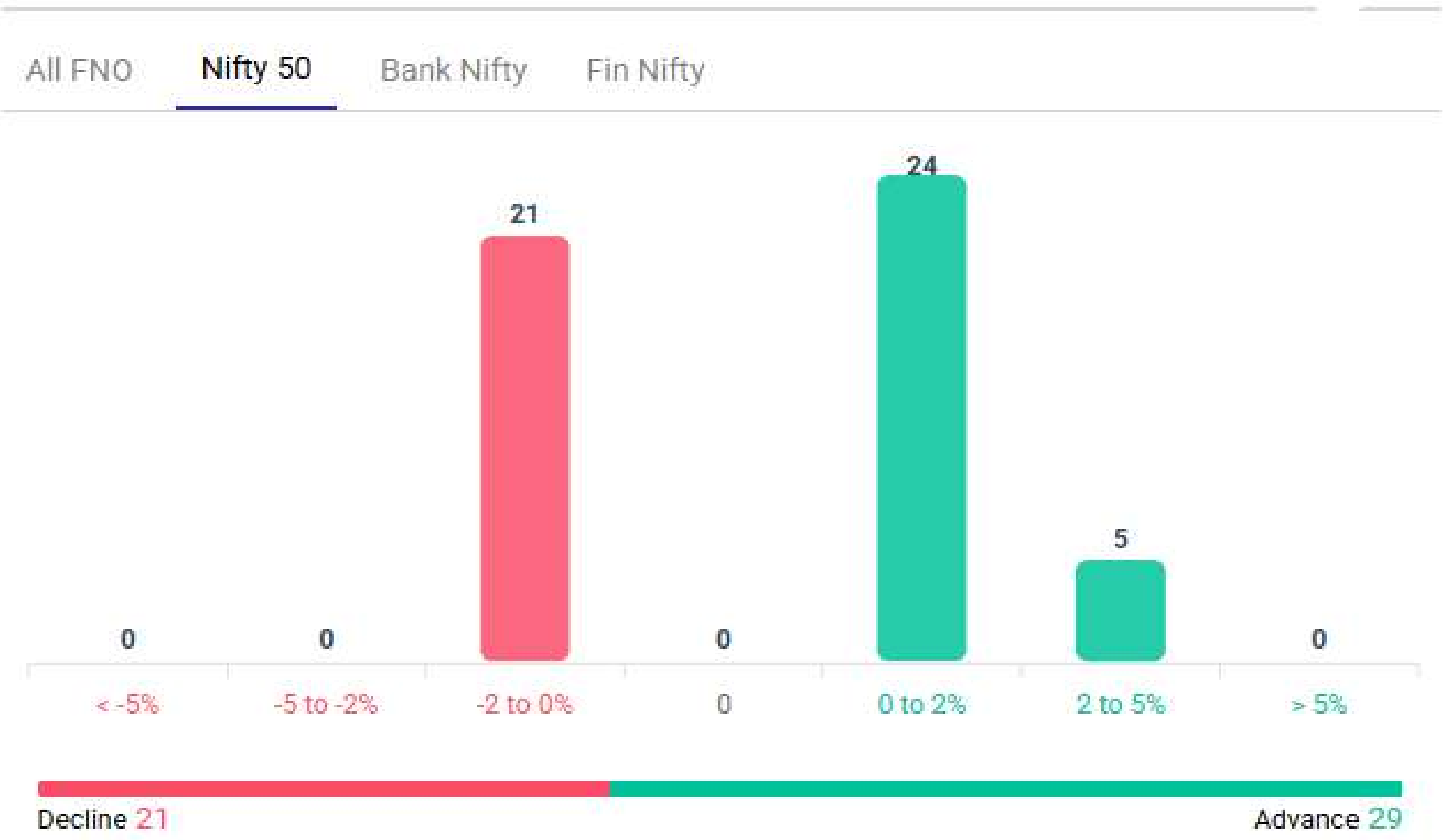
Index	Writing
<b>Nifty</b> (Weekly)	24900 PE & 26200 CE
<b>Sensex</b> (Weekly)	81000 PE & 85800 CE
<b>Bank Nifty</b> (Monthly)	54000 PE & 60500 CE

Weekly Option Range for Option Writers based on Different Confidence Band								
Date		30-Jun-25	Weekly Expiry		3-Jul-25	Days to weekly expiry		4
<b>Nifty</b>		<b>25638</b>	<b>India VIX</b>		<b>12.4</b>			
Confidence Band	Probability	% Away From Spot	Range				Total Premium (Put + Call)	Types of Trades
			Put	Premium	Call	Premium		
1.00	68%	± 0.9%	25400	52	25900	47	99	Aggressive
1.25	79%	± 1.3%	25300	37	26000	28	66	Less Aggressive
1.50	87%	± 1.5%	25250	31	26050	22	53	Neutral
1.75	92%	± 1.7%	25200	27	26100	17	44	Conservative
2.00	95%	± 2.1%	25100	20	26200	10	30	Most Conservative
Date		30-Jun-25	Monthly Expiry		31-Jul-25	Days to weekly expiry		24
<b>Bank Nifty</b>		<b>57444</b>						
Confidence Band	Probability	% Away From Spot	Range				Total Premium (Put + Call)	Types of Trades
			Put	Premium	Call	Premium		
1.00	68%	± 3.2%	55600	252	59200	308	560	Aggressive
1.50	87%	± 4.8%	54700	146	60100	150	296	Neutral
1.75	92%	± 5.5%	54300	116	60500	112	228	Conservative
Investments in securities markets are subject to market risks. Please read all related documents carefully.								

# Nifty Advance Decline & Ban update

Stocks in Ban: **NIL**

## Advance & Decline

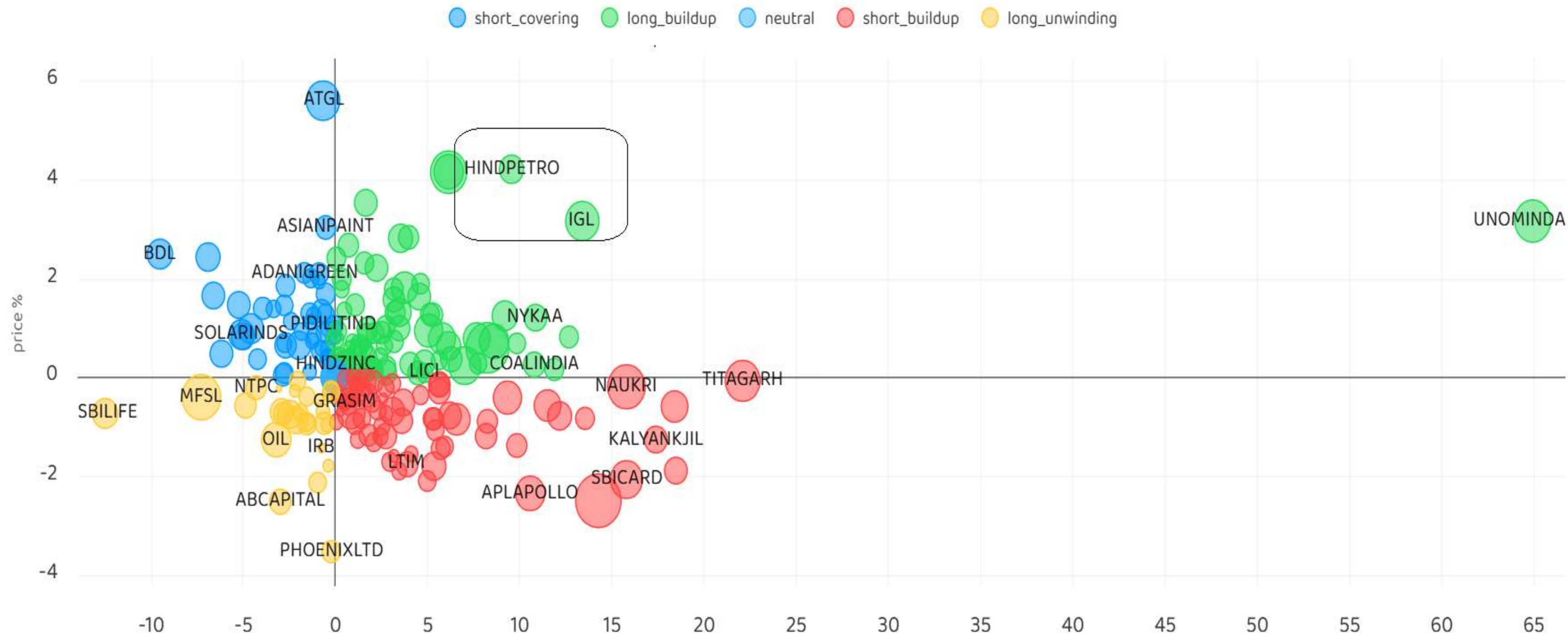


Investment in securities market are subject to market risks, read all the related documents carefully before investing.

# Stocks : Derivatives Outlook



30-Jun-25



Investment in securities market are subject to market risks, read all the related documents carefully before investing.

# Stocks : Options on radar



30-Jun-25

Stock	Call Strike	Trade	Buying Range	SL	TGT	Logic
ICICIBANK	1460 CE	Buy	31-32	27	40	Short Covering
DIVISLAB	6650 CE	Buy	208-210	183	260	Long Built up
EICHERMOT	5650 CE	Buy	139-140	125	168	Short Covering

Stock	Put Strike	Trade	Buying Range	SL	TGT	Logic
TECHM	1680 PE	Buy	48-49	44	57	Short Built up
VOLTAS	1300 PE	Buy	31-32	24	46	Short Built up

Investment in securities market are subject to market risks, read all the related documents carefully before investing.

# Quant Outlook

# Quant Intraday Sell Ideas



## What is this?

Based on technical indicators this strategy gives 2 stocks that have a high likelihood to fall during the day (from open to close). This is an intraday Sell strategy which can provide a good cushioning during a black swan event.

## Today's **Sell** Ideas:

Stock Names	Close Price	SL (1%)	TP (1%)
SUNPHARMA <b>(Sell)</b>	1687.6	1704.5	1670.7
HAVELLS <b>(Sell)</b>	1566.8	1582.5	1551.1

## What are the rules?

- Stock names will be given at market open (9:15 am)
- Recommended time to entry: between 9:15 to 9:30 am.
- Entry: We short 2 stocks daily (intraday)
- Exit: we will exit at 3:15 as this is an intraday call
- SL: is placed at 1% of the open.
- Book profit: At 1% fall since open.
- In special situations the book profit might be delayed if the stock is in free fall.

**Siddhartha Khemka**  
Head – Retail Research

**Chandan Taparua, CMT, CFTe**  
Head – Derivatives & Technical Analyst

**Neil Jha**  
Head – Quant

Disclosures:

The following Disclosures are being made in compliance with the SEBI Research Analyst Regulations 2014 (herein after referred to as the Regulations).

Motilal Oswal Financial Services Ltd. (MOFSL) is a SEBI Registered Research Analyst having registration no. INH000000412. MOFSL, the Research Entity (RE) as defined in the Regulations, is engaged in the business of providing Stock broking services, Depository participant services & distribution of various financial products. MOFSL is a listed public company, the details in respect of which are available on [www.motilaloswal.com](http://www.motilaloswal.com). MOFSL is registered with the Securities & Exchange Board of India (SEBI) and is a registered Trading Member with National Stock Exchange of India Ltd. (NSE) and Bombay Stock Exchange Limited (BSE), Multi Commodity Exchange of India Limited (MCX) and National Commodity & Derivatives Exchange Limited (NCDEX) for its stock broking activities & is Depository participant with Central Depository Services Limited (CDSL) National Securities Depository Limited (NSDL),NERL, COMRIS and CCRL and is member of Association of Mutual Funds of India (AMFI) for distribution of financial products and Insurance Regulatory & Development Authority of India (IRDA) as Corporate Agent for insurance products. Details of associate entities of Motilal Oswal Financial Services Ltd. are available on the website at <http://onlinereports.motilaloswal.com/Dormant/documents/Associate%20Details.pdf>

Details of pending Enquiry Proceedings of Motilal Oswal Financial Services Limited are available on the website at <https://galaxy.motilaloswal.com/ResearchAnalyst/PublishViewLitigation.aspx>

MOFSL, its associates, Research Analyst or their relatives may have any financial interest in the subject company. MOFSL and/or its associates and/or Research Analyst or their relatives may have actual beneficial ownership of 1% or more securities in the subject company at the end of the month immediately preceding the date of publication of the Research Report or date of the public appearance. MOFSL and its associate company(ies), their directors and Research Analyst and their relatives may have any other potential conflict of interests at the time of publication of the research report or at the time of public appearance, however the same shall have no bearing whatsoever on the specific recommendations made by the analyst(s), as the recommendations made by the analyst(s) are completely independent of the views of the associates of MOFSL even though there might exist an inherent conflict of interest in some of the stocks mentioned in the research report..

In the past 12 months, MOFSL or any of its associates may have:

- a. Received any compensation/other benefits from the subject company of this report
- b. Managed or co managed public offering of securities from subject company of this research report,
- c. Received compensation for investment banking or merchant banking or brokerage services from subject company of this research report,
- d. Received compensation for products or services other than investment banking or merchant banking or brokerage services from the subject company of this research report.
- MOFSL and its associates have not received any compensation or other benefits from the subject company or third party in connection with the research report.
- Subject Company may have been a client of MOFSL or its associates during twelve months preceding the date of distribution of the research report.
- Research Analyst may have served as director/officer/employee in the subject company.
- MOFSL and research analyst may engage in market making activity for the subject company.

MOFSL and its associate company(ies), and Research Analyst and their relatives from time to time may

a) a long or short position in, act as principal in, and buy or sell the securities or derivatives thereof of companies mentioned herein.

(b) be engaged in any other transaction involving such securities and earn brokerage or other compensation or act as a market

maker in the financial instruments of the company(ies) discussed herein or act as an advisor or lender/borrower to such ies) or may have any other potential conflict of interests with respect to any recommendation and other related information and opinions.; however the same shall have no bearing whatsoever on the specific recommendations made by the analyst(s), as the recommendations made by the analyst (are completely independent of the views of the associates of MOFSL even though there might exist an inherent conflict of interest in some of the stocks mentioned in the research report.

Above disclosures include beneficial holdings lying in demat account of MOFSL which are opened for proprietary investments only. While calculating beneficial holdings, It does not consider demat accounts which are opened in name of MOFSL for other purposes ( i.e holding client securities, collaterals, error trades etc.). MOFSL also earns DP income from clients which are not considered in above disclosures.

To enhance transparency, MOFSL has incorporated a Disclosure of Interest Statement in this document. This should, however, not be treated as endorsement of the views expressed in the report. MOFSL and / or its affiliates do and seek to do business including investment banking with companies covered in its research reports. As a result, the recipients of this report should be aware that MOFSL may have a potential conflict of interest that may affect the objectivity of this report.

Terms & Conditions:

This report has been prepared by MOFSL and is meant for sole use by the recipient and not for circulation. The report and information contained herein is strictly confidential and may not be altered in any way, transmitted to, copied or distributed, in part or in whole, to any other person or to the media or reproduced in any form, without prior written consent of MOFSL. The report is based on the facts, figures and information that are considered true, correct, reliable and accurate. The intent of this report is not recommendatory in nature. The information is obtained from publicly available media or other sources believed to be reliable. Such information has not been independently verified and no guaranty, representation of warranty, express or implied, is made as to its accuracy, completeness or correctness. All such information and opinions are subject to change without notice. The report is prepared solely for informational purpose and does not constitute an offer document or solicitation of offer to buy or sell or subscribe for securities or other financial instruments for the clients. Though disseminated to all the customers simultaneously, not all customers may receive this report at the same time. MOFSL will not treat recipients as customers by virtue of their receiving this report.

Analyst Certification

The views expressed in this research report accurately reflect the personal views of the analyst(s) about the subject securities or issues, and no part of the compensation of the research analyst(s) was, is, or will be directly or indirectly related to the specific recommendations and views

expressed by research analyst(s) in this report. Disclosure of Interest Statement

Analyst ownership of the stock No

A graph of daily closing prices of securities is available at [www.nseindia.com](http://www.nseindia.com), [www.bseindia.com](http://www.bseindia.com). Research Analyst views on Subject Company may vary based on Fundamental research and Technical Research. Proprietary trading desk of MOFSL or its associates maintains arm’s length distance with Research Team as all the activities are segregated from MOFSL research activity and therefore it can have an independent view with regards to subject company for which Research Team have expressed their views.

Regional Disclosures (outside India)

This report is not directed or intended for distribution to or use by any person or entity resident in a state, country or any jurisdiction, where such distribution, publication, availability or use would be contrary to law, regulation or which would subject MOFSL & its group companies to registration or licensing requirements within such jurisdictions. For Hong Kong:

This report is distributed in Hong Kong by Motilal Oswal capital Markets (Hong Kong) Private Limited, a licensed corporation (CE AYY 301) licensed and regulated by the Hong Kong Securities and Futures Commission (SFC) pursuant to the Securities and Futures Ordinance (Chapter 571 of the Laws of Hong Kong) “SFO”. As per SEBI (Research Analyst Regulations) 2014 Motilal Oswal Financial Services Limited (SEBI Reg No. INH000000412) has an agreement with Motilal Oswal capital Markets (Hong Kong) Private Limited for distribution of research report in Hong Kong. This report is intended for distribution only to “Professional Investors” as defined in Part I of Schedule 1 to SFO. Any investment or investment activity to which this document relates is only available to professional investor and will be engaged only with professional investors.” Nothing here is an offer or solicitation of these securities, products and services in any jurisdiction where the offer or sale is not qualified or exempt from registration. The Indian Analyst(s) who compile this report is/are not located in Hong Kong & are not conducting Research Analysis in Hong Kong.

Investment in securities market are subject to market risks, read all the related documents carefully before investing.

For U.S.

MOTILAL Oswal Financial Services Limited (MOFSL) is not a registered broker - dealer under the U.S. Securities Exchange Act of 1934, as amended (the"1934 act") and under applicable state laws in the United States. In addition MOFSL is not a registered investment adviser under the U.S. Investment Advisers Act of 1940, as amended (the "Advisers Act" and together with the 1934 Act, the "Acts), and under applicable state laws in the United States. Accordingly, in the absence of specific exemption under the Acts, any brokerage and investment services provided by MOFSL, including the products and services described herein are not available to or intended for U.S. persons. This report is intended for distribution only to "Major Institutional Investors" as defined by Rule 15a-6(b)(4) of the Exchange Act and interpretations thereof by SEC (henceforth referred to as "major institutional investors"). This document must not be acted on or relied on by persons who are not major institutional investors. Any investment or investment activity to which this document relates is only available to major institutional investors and will be engaged in only with major institutional investors. In reliance on the exemption from registration provided by Rule 15a-6 of the U.S. Securities Exchange Act of 1934, as amended (the "Exchange Act") and interpretations thereof by the U.S. Securities and Exchange Commission ("SEC") in order to conduct business with Institutional Investors based in the U.S., MOFSL has entered into a chaperoning agreement with a U.S. registered broker-dealer, Motilal Oswal Securities International Private Limited. ("MOSIPL"). Any business interaction pursuant to this report will have to be executed within the provisions of this chaperoning agreement.

The Research Analysts contributing to the report may not be registered /qualified as research analyst with FINRA. Such research analyst may not be associated persons of the U.S. registered broker-dealer, MOSIPL, and therefore, may not be subject to NASD rule 2711 and NYSE Rule 472 restrictions on communication with a subject company, public appearances and trading securities held by a research analyst account.

For Singapore

In Singapore, this report is being distributed by Motilal Oswal Capital Markets Singapore Pte Ltd (“MOCMSPL”) (Co.Reg. NO. 201129401Z) which is a holder of a capital markets services license and an exempt financial adviser in Singapore, as per the approved agreement under Paragraph 9 of Third Schedule of Securities and Futures Act (CAP 289) and Paragraph 11 of First Schedule of Financial Advisors Act (CAP 110) provided to MOCMSPL by Monetary Authority of Singapore. Persons in Singapore should contact MOCMSPL in respect of any matter arising from, or in connection with this report/publication/communication. This report is distributed solely to persons who qualify as “Institutional Investors”, of which some of whom may consist of "accredited" institutional investors as defined in section 4A(1) of the Securities and Futures Act, Chapter 289 of Singapore (“the SFA”).

Accordingly, if a Singapore person is not or ceases to be such an institutional investor, such Singapore Person must immediately discontinue any use of this Report and inform MOCMSPL.

Disclaimer:

This report is intended for distribution to Retail Investors.

The report and information contained herein is strictly confidential and meant solely for the selected recipient and may not be altered in any way, transmitted to, copied or distributed, in part or in whole, to any other person or to the media or reproduced in any form, without prior written consent. This report and information herein is solely for informational purpose and may not be used or considered as an offer document or solicitation of offer to buy or sell or subscribe for securities or other financial instruments. Nothing in this report constitutes investment, legal, accounting and tax advice or a representation that any investment or strategy is suitable or appropriate to your specific circumstances. The securities discussed and opinions expressed in this report may not be suitable for all investors, who must make their own investment decisions, based on their own investment objectives, financial positions and needs of specific recipient. This may not be taken in substitution for the exercise of independent judgment by any recipient. Each recipient of this document should make such investigations as it deems necessary to arrive at an independent evaluation of an investment in the securities of companies referred to in this document (including the merits and risks involved), and should consult its own advisors to determine the merits and risks of such an investment. The investment discussed or views expressed may not be suitable for all investors. Certain transactions -including those involving futures, options, another derivative products as well as non-investment grade securities - involve substantial risk and are not suitable for all investors. No representation or warranty, express or implied, is made as to the accuracy, completeness or fairness of the information and opinions contained in this document. The Disclosures of Interest Statement incorporated in this document is provided solely to enhance the transparency and should not be treated as endorsement of the views expressed in the report. This information is subject to change without any prior notice. The Company reserves the right to make modifications and alternations to this statement as may be required from time to time without any prior approval. MOFSL, its associates, their directors and the employees may from time to time, effect or have effected an own account transaction in, or deal as principal or agent in or for the securities mentioned in this document. They may perform or seek to perform investment banking or other services for, or solicit investment banking or other business from, any company referred to in this report. Each of these entities functions as a separate, distinct and independent of each other. The recipient should take this into account before interpreting the document. This report has been prepared on the basis of information that is already available in publicly accessible media or developed through analysis of MOFSL. The views expressed are those of the analyst, and the Company may or may not subscribe to all the views expressed therein. This document is being supplied to you solely for your information and may not be reproduced, redistributed or passed on, directly or indirectly, to any other person or published, copied, in whole or in part, for any purpose. This report is not directed or intended for distribution to, or use by, any person or entity who is a citizen or resident of or located in any locality, state, country or other jurisdiction, where such distribution, publication, availability or use would be contrary to law, regulation or which would subject MOFSL to any registration or licensing requirement within such jurisdiction. The securities described herein may or may not be eligible for sale in all jurisdictions or to certain category of investors. Persons in whose possession this document may come are required to inform themselves of and to observe such restriction. Neither the Firm, not its directors, employees, agents or representatives shall be liable for any damages whether direct or indirect, incidental, special or consequential including lost revenue or lost profits that may arise from or in connection with the use of the information. The person accessing this information specifically agrees to exempt MOFSL or any of its affiliates or employees from, any and all responsibility/liability arising from such misuse and agrees not to hold MOFSL or any of its affiliates or employees responsible for any such misuse and further agrees to hold MOFSL or any of its affiliates or employees free and harmless from all losses, costs, damages, expenses that may be suffered by the person accessing this information due to any errors and delays.

This report is meant for the clients of Motilal Oswal only.

Investment in securities market are subject to market risks. Read all the related documents carefully before investing.

Registration granted by SEBI and certification from NISM in no way guarantee performance of the intermediary or provide any assurance of returns to investors.

Registered Office Address: Motilal Oswal Tower, Rahimtullah Sayani Road, Opposite Parel ST Depot, Prabhadevi, Mumbai-400025; Tel No.: 022 - 71934200 / 71934263; www.motilaloswal.com. Correspondence Address: Palm Spring Centre, 2nd Floor, Palm Court Complex, New Link Road, Malad (West), Mumbai- 400 064. Tel No: 022 71881000. Details of Compliance Officer: Neeraj Agarwal, Email Id: na@motilaloswal.com, Contact No.:022-40548085.

Grievance Redressal Cell:

Contact Person	Contact No.	Email ID
Ms. Hemangi Date	022 40548000 / 022 67490600	query@motilaloswal.com
Ms. Kumud Upadhyay	022 40548082	servicehead@motilaloswal.com
Mr. Ajay Menon	022 40548083	am@motilaloswal.com

Registration details of group entities.: Motilal Oswal Financial Services Ltd. (MOFSL): INZ000158836 (BSE/NSE/MCX/NCDEX); CDSL and NSDL: IN-DP-16-2015; Research Analyst: INH000000412 . AMFI: ARN .: 146822. IRDA Corporate Agent – CA0579. Motilal Oswal Financial Services Ltd. is a distributor of Mutual Funds, PMS, Fixed Deposit, Insurance, Bond, NCDs and IPO products.

Customer having any query/feedback/ clarification may write to query@motilaloswal.com. In case of grievances for any of the services rendered by Motilal Oswal Financial Services Limited (MOFSL) write to grievances@motilaloswal.com, for DP to dpgrievances@motilaloswal.com.