



**Solid Research**  
**Solid Relationships**

# Fundamental Outlook

# Global Market Summary



26-Jun-25

- **US markets yesterday ended on a flat note**, pausing a two-day rally as the tenuous Israel-Iran cease fire continued to hold and investors pored over a second day of congressional testimony from Federal Reserve Chair Jerome Powell.
- **Dow Jones fell -0.3%**, **Nasdaq up +0.3%** while **S&P500 ended flat**
- **European markets ended ~-0.5% lower**
- **Dow futures is currently trading 0.1% higher (43 points up)**
- **Most Asian markets are trading in green in range**, as traders assessed simmering economic and geopolitical risks.

**Global Cues: Positive**

# Indian Market Summary



- **Indian equities** ended higher amid positive global cues as tensions in the Middle East eased following a tentative ceasefire between Israel and Iran. A decline in crude oil prices and the US Dollar Index further supported market sentiment.
- **Nifty50** ended with a **gain of 192 points at 25,236 (+0.8%)**.
- **Nifty Midcap100 and Smallcap100** **were up by 0.4% and 1.5% respectively**.
- **FII**s: **-₹2,427cr**; **DII**s **+₹2,372cr**
- **GIFT Nifty** is trading **0.1% higher (31 points up)**

**Domestic Cues: Positive**

# News & Impact



**Union Bank of India:** The company approved raising funds up to Rs 6,000 crore via debt and equity

Impact: **Positive**

**BSE:** SEBI imposed a penalty of Rs 25 lakh for violation of regulation

Impact: **Negative**

**Vodafone:** The telecom operator is said to seek \$2.9 billion in loans to bolster network.

Impact: **Positive**

# Actionable Idea



**BEL**

**CMP ₹406, MTF Stock**

- NATO agrees to 5% Defence spending target, moving from a 2% guideline to 5% of GDP by 2035
- NATO countries spent over \$1.3trillion on core defence in 2024. If target is implemented it will be big opportunity globally for defence players including India
- BEL could benefit from this as its product lines align with mid-tier NATO requirements.
- Company is also rightly positioned to benefit from the expected upcoming emergency procurement list domestically and to cater to wider defense electronics components across the army, navy and air force for the next few years.

**View: Buy**

# Actionable Idea



## Coforge

**CMP ₹ 1879; TP: ₹ 2200; Upside: 17%; Buy, MTF Stock**

- We recently interacted with COFORGE's CFO to understand the company's growth outlook.
- COFORGE has reiterated its target of reaching USD2b revenue by FY27, driven by strong organic momentum and cross-selling opportunities from Cigniti;
- With an executable order book of ~USD1.5b (+47% YoY), near-term revenue visibility remains high, and management expects organic growth in FY26 to outpace FY25 levels;
- The company's BFSI and transportation verticals remain core growth engines, each delivering +20% YoY growth in FY25 despite a challenging macro environment;
- Margin outlook is constructive, with one-offs behind and levers like delivery mix and lower ESOP costs offering ~100-120bp upside by FY27.
- We continue to view COFORGE as a structurally strong mid-tier player well-placed to benefit from vendor consolidation/cost-takeout deals and digital transformation. Cigniti could also prove to be an effective long-term asset.

**View: Buy**



# Focus Ideas for the Month



Fundamental  
Outlook

26-Jun-25

All Stocks Available in MTF

Duration : 1 Year Horizon

Stock Name	Rating	CMP (Rs)	Target (Rs)	Upside (%)
Time Technoplast	Buy	452	578	28%
Niva Bupa	Buy	82	100	22%
Hindustan Aeronautics	Buy	4,791	5,650	18%
ICICI Bank	Buy	1,425	1,650	16%
Nuvama Wealth	Buy	7,502	8,600	15%

Investment in securities market are subject to market risks, read all the related documents carefully before investing.



# Technical Outlook

# Nifty Technical Outlook



26-Jun-25

**NIFTY (CMP : 25245)** Nifty immediate support is at 25100 then 24900 zones while resistance at 25350 then 25500 zones. Now it has to hold above 25150, for an up move towards 25350 and 25500 zones while supports can be seen at 25100 then 24900 zones.

1-Nifty50 - 25/06/25



Investment in securities market are subject to market risks, read all the related documents carefully before investing.



# Bank Nifty Technical Outlook



26-Jun-25

**BANK NIFTY (CMP : 56621)** Bank Nifty support is at 56250 then 56000 zones while resistance at 56750 then 57000 zones. Now it has to hold above 56500 zones for an up move towards 56750 then 57000 levels while on the downside support is seen at 56250 then 56000 zones.

1-Niftybank - 25/06/25



Investment in securities market are subject to market risks, read all the related documents carefully before investing.

# Sectoral Performance



Technical  
Outlook

**motilal  
oswal**  
Wealth Management

26-Jun-25

	Closing	% Change			
Indices	25-Jun	1-day	2-days	3-days	5-days
NIFTY 50	25245	0.80%	1.09%	0.53%	1.74%
NIFTY BANK	56621	0.28%	1.00%	0.65%	1.42%
NIFTY MIDCAP 100	58882	0.44%	1.16%	1.53%	1.33%
➔ NIFTY SMALLCAP 250	17456	1.60%	2.39%	3.18%	1.82%
NIFTY FINANCIAL SERVICES	26851	0.38%	1.11%	0.76%	1.71%
NIFTY PRIVATE BANK	28126	-0.03%	0.70%	0.53%	1.26%
NIFTY PSU BANK	6953	0.20%	1.66%	1.58%	1.14%
➔ NIFTY IT	39046	1.64%	1.65%	0.14%	0.04%
NIFTY FMCG	54747	0.74%	0.96%	0.21%	0.54%
NIFTY OIL & GAS	11482	0.24%	0.07%	0.18%	0.44%
NIFTY PHARMA	21805	0.61%	0.83%	0.89%	1.00%
➔ NIFTY AUTO	23828	0.97%	1.56%	0.63%	2.21%
NIFTY METAL	9329	0.41%	1.42%	2.09%	1.87%
NIFTY REALTY	1020	0.54%	0.70%	0.60%	1.07%
NIFTY INDIA DEFENCE	8681	-2.00%	-4.37%	-2.33%	-1.99%
NIFTY CPSE	6532	-0.50%	-1.72%	-0.93%	0.00%

Investment in securities market are subject to market risks, read all the related documents carefully before investing.

# Technical Trading Idea

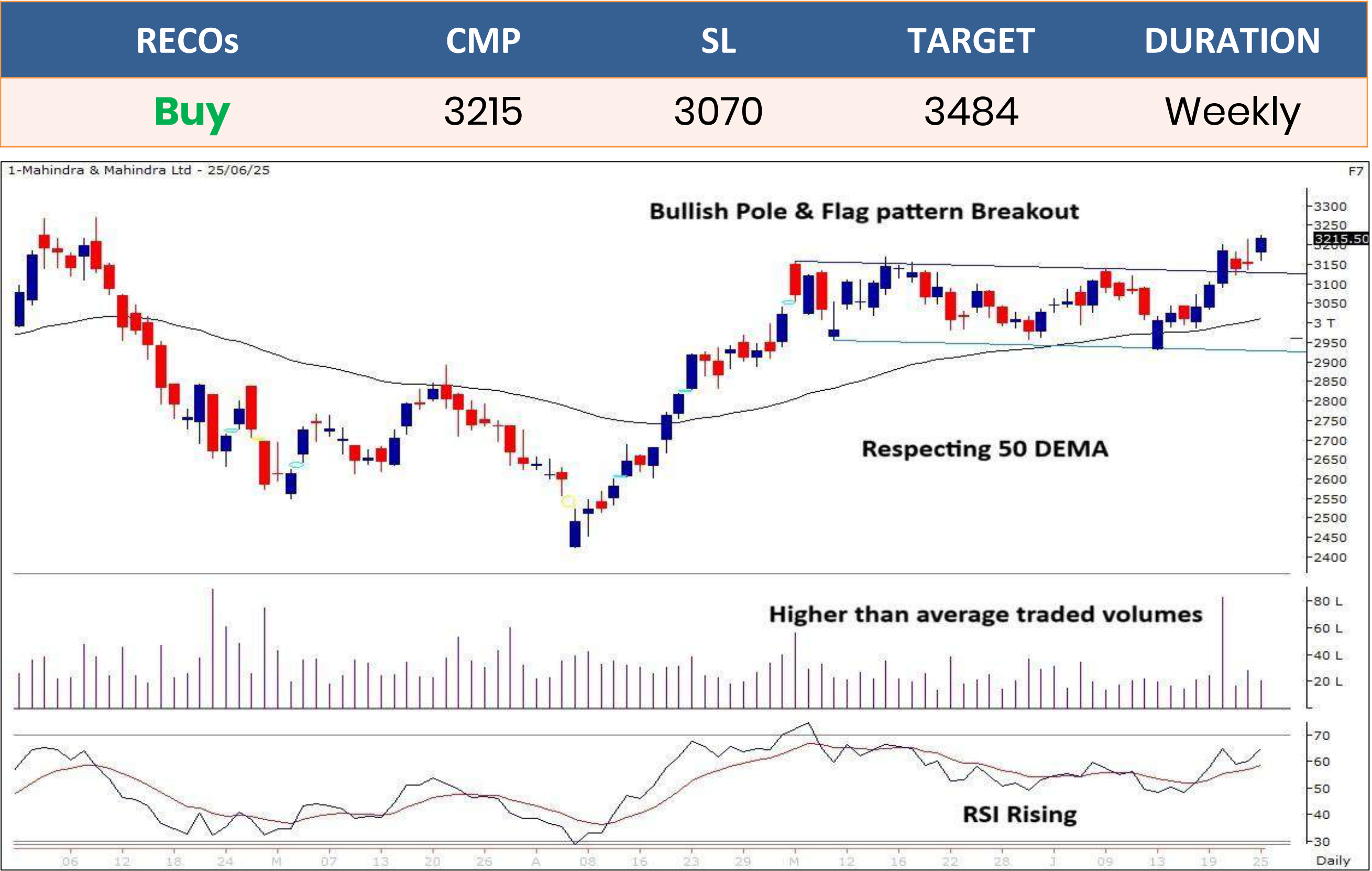
26-Jun-25

M&M

(Mcap ₹ 3,99,857 Cr.)

F&O Stock, MTF Stock

- Bullish “Pole & Flag” pattern on daily chart.
- Respecting 50 DEMA support zones.
- Higher than average traded volumes.
- RSI momentum indicator rising.
- We recommend to buy the stock at CMP ₹3215 with a SL of ₹3070 and a TGT of ₹3484.



Investment in securities market are subject to market risks, read all the related documents carefully before investing.



# Stocks On Radar

26-Jun-25

## TITAN

(CMP: 3652 , Mcap ₹ 3,24,237 Cr.)

**F&O Stock, MTF Stock**

- Falling supply trendline breakout.
- Respecting 50 DEMA support zones.
- Surge in traded volumes.
- RSI momentum indicator rising.
- Immediate support at 3550.



## BSOFT

(CMP: 443, Mcap ₹ 12,329 Cr.)

**F&O Stock, MTF Stock**

- Ascending triangle breakout.
- Strong bullish candle.
- Surge in volumes.
- RSI indicator positively placed.
- Immediate support at 420.



# Derivative Outlook



# Derivative Outlook



26-Jun-25

- Nifty June future closed at 25250.20 with a premium of 7.45 point v/s 27.35 point premium in the last session.
- Nifty Put/Call Ratio (OI) increased from 0.85 to 1.13 level.
- India VIX decreased by 4.93% to 12.97 level.

# FII Cash & Derivative Activity



26-Jun-25

- FII on Derivatives front : Short covering in index futures, call and put buying in index options
- In the cash market : FIIs were net sellers to the tune of 2306 Cr while DIIs were also net buyers worth 2018 Cr.
- FIIs long short ratio : Hovering near 23%

## INSTITUTIONAL DERIVATIVES ACTIVITY

Change in OI in Future Index Long (in contracts)					Change in OI in Future Index Short (in contracts)					Change in OI in Future Stock Long (in contracts)					Change in OI in Future Stock Short (in contracts)				
Date	Client	DII	FII	Pro	Date	Client	DII	FII	Pro	Date	Client	DII	FII	Pro	Date	Client	DII	FII	Pro
19-Jun-25	-3185	-123	4805	-599	19-Jun-25	1623	183	2634	-3542	19-Jun-25	-8917	5642	-3229	15362	19-Jun-25	4493	-18683	2381	20667
20-Jun-25	-5206	-4458	4561	14401	20-Jun-25	892	7226	3967	-2787	20-Jun-25	-36528	4551	57224	-12257	20-Jun-25	8773	-12493	-20659	37369
23-Jun-25	169	-1145	-1070	-5468	23-Jun-25	-10076	-3016	5269	309	23-Jun-25	6680	3796	-54294	-19891	23-Jun-25	-3316	16984	-69422	-7955
24-Jun-25	2056	-3192	3477	6857	24-Jun-25	-1742	-5274	10241	5973	24-Jun-25	-24554	4818	14235	-16520	24-Jun-25	-17139	-13917	-4713	13748
25-Jun-25	-7514	-1574	310	16180	25-Jun-25	8355	2500	-2291	-1162	25-Jun-25	-59133	780	-13949	-59327	25-Jun-25	-14652	-54685	-54542	-7750

Change in OI in Option Index Call Long (in contracts)					Change in OI in Option Index Call Short (in contracts)					Change in OI in Option Index Put Long (in contracts)					Change in OI in Option Index Put Short (in contracts)				
Date	Client	DII	FII	Pro	Date	Client	DII	FII	Pro	Date	Client	DII	FII	Pro	Date	Client	DII	FII	Pro
19-Jun-25	-1266402	0	-94016	-481368	19-Jun-25	-1253851	0	-165325	-422609	19-Jun-25	-729074	0	-81514	-300366	19-Jun-25	-715762	0	-129834	-265359
20-Jun-25	117342	0	108547	267621	20-Jun-25	296716	0	155972	40821	20-Jun-25	606116	0	112618	347440	20-Jun-25	582854	0	173316	310003
23-Jun-25	424599	0	7958	28933	23-Jun-25	392485	0	-16060	85064	23-Jun-25	146269	7600	54824	-25714	23-Jun-25	232989	0	6130	-56138
24-Jun-25	423203	0	42551	257584	24-Jun-25	361770	0	142860	218708	24-Jun-25	39827	1700	-19477	41924	24-Jun-25	-6136	0	64500	5609
25-Jun-25	-242920	0	57633	29182	25-Jun-25	-147327	0	-21492	12715	25-Jun-25	519433	0	125912	257069	25-Jun-25	553231	0	77278	271905

Today's OI Changes (in contracts)										Cummulative Positions (in contracts)									
Clients	Index Futures			Index Calls			Index Puts			Clients	Index Futures			Index Calls			Index Puts		
	Long	Short	Net	Long	Short	Net	Long	Short	Net		Long	Short	Net	Long	Short	Net	Long	Short	Net
	-7514	8355	-15869	-242920	-147327	-95593	519433	553231	-33798		179448	123519	55929	2432787	2913816	-481029	2830335	3149028	-318693
DII	-1574	2500	-4074	0	0	0	0	0	0	DII	75682	45247	30435	70	0	70	25187	0	25187
FII	310	-2291	2601	57633	-21492	79125	125912	77278	48634	FII	46451	153321	-106870	715457	557900	157557	810579	629518	181061
Pro	16180	-1162	17342	29182	12715	16467	257069	271905	-14836	Pro	55863	35357	20506	1420740	1097338	323402	1339010	1226565	112445

FII Derivatives Activity		Index Long Short Ratio	
Segment	Net Amount (in Cr)	Clients	
Index Futures	528	DII	59.23%
Index Options	21093	FII	23.25%
Stock Futures	4123	Pro	61.24%
Stock Options	-1635		

Institutions Activity in Cash Segment - Net Value (in Cr)							
	25-Jun-25	24-Jun-25	23-Jun-25	20-Jun-25	19-Jun-25	18-Jun-25	17-Jun-25
FIIs	-2306.1	-2973.24	-1977.06	7704.37	1008.43	945.35	1616.19
DIIs	2018.14	4303.08	3228.5	-3657.7	365.68	952.81	7796.57



Investments in securities markets are subject to market risks.  
Please read all related documents carefully.

Investment in securities market are subject to market risks, read all the related documents carefully before investing.

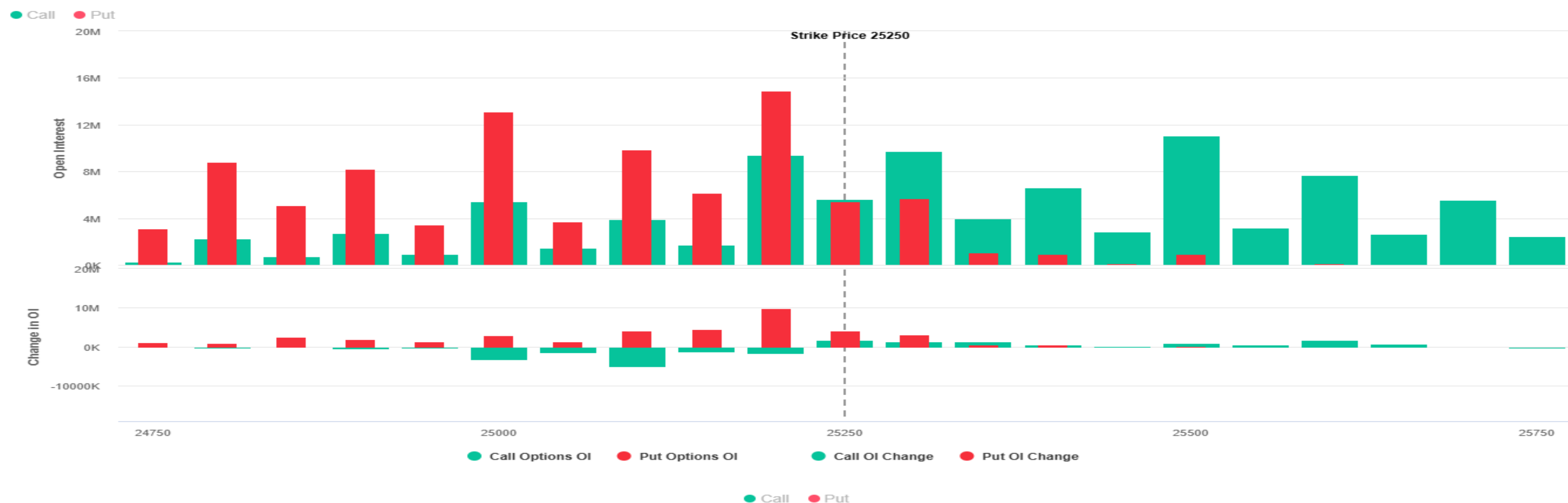
# Nifty : Option Data



26-Jun-25

- Maximum Call OI is at 25300 then 25500 strike while Maximum Put OI is at 25200 then 25000 strike.
- Call writing is seen at 25250 then 25300 strike while Put writing is seen at 25200 then 25150 strike.
- Option data suggests a broader trading range in between 24700 to 25700 zones while an immediate range between 25000 to 25400 levels.

Nifty 50 OI Chart(26 Jun 2025)



Investment in securities market are subject to market risks, read all the related documents carefully before investing.

# Option - Buying side strategy



26-Jun-25


Index	Single Leg Buying	Multi Leg Strategy
<b>Nifty</b> (Monthly)	25250 CE till it holds above 25150	Bull Call Spread (Buy 25250 CE and Sell 25400 CE) at net premium cost of 40-45 points
<b>Sensex</b> (Weekly)	83400 CE till it holds above 82500	Bull Call Spread (Buy 83000 CE and Sell 83200 CE) at net premium cost of 70-80 points
<b>Bank Nifty</b> (Monthly)	56600 CE till it holds above 56500	Bull Call Spread (Buy 56700 CE and Sell 57000 CE) at net premium cost of 80-100 points

# Option - Selling side strategy



26-Jun-25

Index	Writing
<b>Nifty</b> (Monthly)	24900 PE & 25500 CE
<b>Sensex</b> (Weekly)	78000 PE & 85500 CE
<b>Bank Nifty</b> (Monthly)	56000 PE & 57100 CE

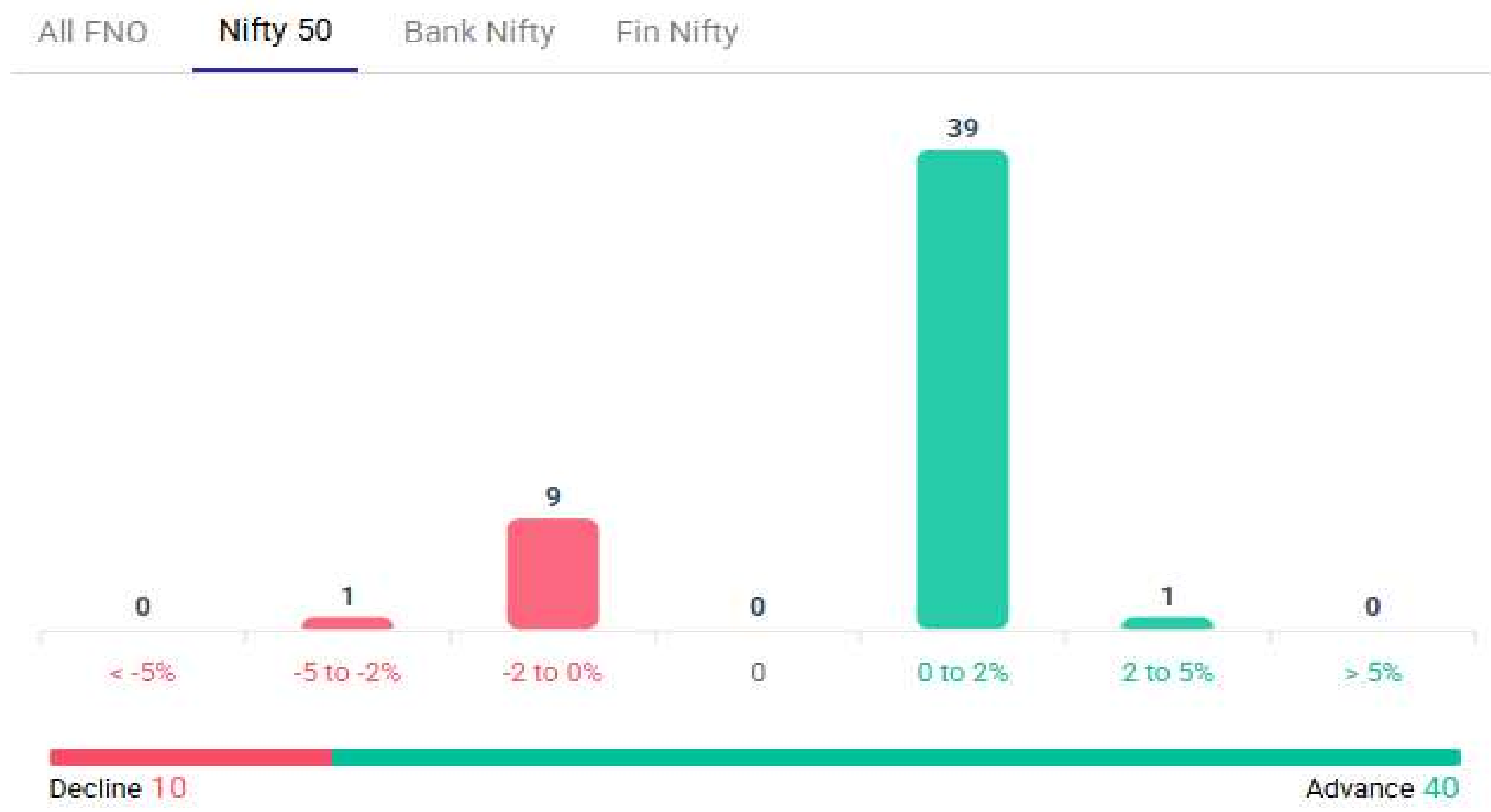
Weekly Option Range for Option Writers based on Different Confidence Band								
Date		26-Jun-25	Weekly Expiry		26-Jun-25	Days to weekly expiry		1
								
Nifty		25245	India VIX		13.0			
Confidence Band	Probability	% Away From Spot	Range				Total Premium (Put + Call)	Types of Trades
			Put	Premium	Call	Premium		
1.00	68%	± 0.6%	25100	23	25400	19	43	Aggressive
1.75	92%	± 0.8%	25050	18	25450	14	32	Conservative
2.00	95%	± 1.0%	25000	15	25500	10	24	Most Conservative
Date		26-Jun-25	Monthly Expiry		26-Jun-25	Days to weekly expiry		1
Bank Nifty		56621						
Confidence Band	Probability	% Away From Spot	Range				Total Premium (Put + Call)	Types of Trades
			Put	Premium	Call	Premium		
1.00	68%	± 0.6%	56300	58	56900	59	117	Aggressive
1.25	79%	± 0.7%	56200	46	57000	42	88	Less Aggressive
1.75	92%	± 0.9%	56100	37	57100	30	67	Conservative
2.00	95%	± 1.1%	56000	32	57200	22	54	Most Conservative
Investments in securities markets are subject to market risks. Please read all related documents carefully.								



# Nifty Advance Decline & Ban update

Stocks in Ban: TITAGARH, BSOFT, MCX

## Advance & Decline

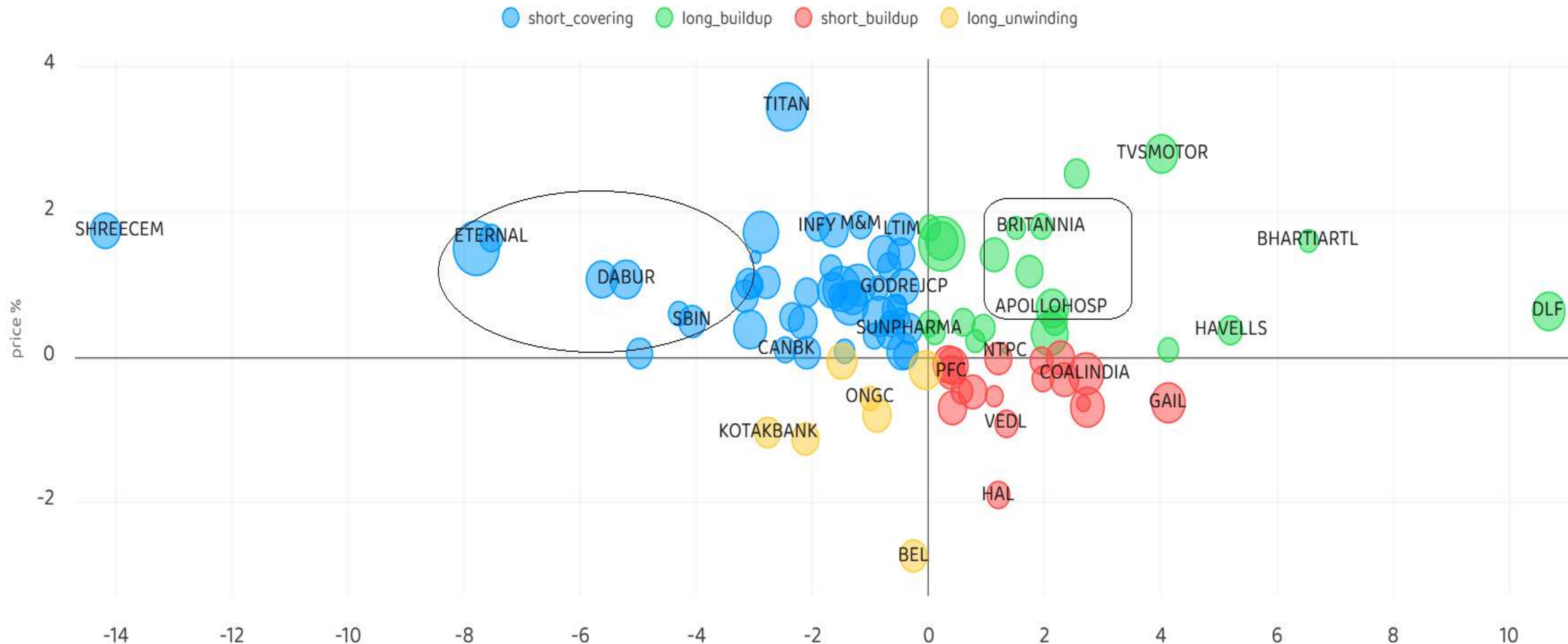


Investment in securities market are subject to market risks, read all the related documents carefully before investing.

# Stocks : Derivatives Outlook



26-Jun-25



Investment in securities market are subject to market risks, read all the related documents carefully before investing.



# Stocks : Options on radar



Stock	Call Strike	Trade	Buying Range	SL	TGT	Logic
M&M	3250 CE (31st JUL)	Buy	87-88	75	112	Short Covering
MPHASIS	2760 CE (31st JUL)	Buy	117-120	108	138	Short Covering
RELIANCE	1470 CE (31st JUL)	Buy	35-36	30	46	Short Covering

Stock	Put Strike	Trade	Buying Range	SL	TGT	Logic
HAL	4800 PE (31st JUL)	Buy	187-188	171	220	Short Built up
COLPAL	2420 PE (31st JUL)	Buy	54-55	44	75	Long Unwinding

# Quant Outlook

# Quant Intraday Sell Ideas



## What is this?

Based on technical indicators this strategy gives 2 stocks that have a high likelihood to fall during the day (from open to close). This is an intraday Sell strategy which can provide a good cushioning during a black swan event.

## Today's **Sell** Ideas:

Stock Names	Close Price	SL (1%)	TP (1%)
HAVELLS <b>(Sell)</b>	1569.3	1585.0	1553.6
BPCL <b>(Sell)</b>	319.6	322.8	316.4

## What are the rules?

- Stock names will be given at market open (9:15 am)
- Recommended time to entry: between 9:15 to 9:30 am.
- Entry: We short 2 stocks daily (intraday)
- Exit: we will exit at 3:15 as this is an intraday call
- SL: is placed at 1% of the open.
- Book profit: At 1% fall since open.
- In special situations the book profit might be delayed if the stock is in free fall.

**Siddhartha Khemka**  
Head – Retail Research

**Chandan Tapar**ia, CMT, CFTe  
Head – Derivatives & Technical Analyst

**Neil Jha**  
Head – Quant

Disclosures:

The following Disclosures are being made in compliance with the SEBI Research Analyst Regulations 2014 (herein after referred to as the Regulations).

Motilal Oswal Financial Services Ltd. (MOFSL) is a SEBI Registered Research Analyst having registration no. INH000000412. MOFSL, the Research Entity (RE) as defined in the Regulations, is engaged in the business of providing Stock broking services, Depository parti cip ant services & distribution of various financial products. MOFSL is a listed public company, the details in respect of which are available on [www.motilaloswal.com](http://www.motilaloswal.com). MOFSL is registered with the Securities & Exchange Board of India (SEBI) and is a registered Trading Me mbe r with National Stock Exchange of India Ltd. (NSE) and Bombay Stock Exchange Limited (BSE), Multi Commodity Exchange of India Li mited (MCX) and National Commodity & Derivatives Exchange Limited (NCDEX) for its stock broking activities & is Depository pa rti cipant with Central Depository Services Limited (CDSL) National Securities Depository Limited (NSDL),NERL, COMRIS and CCRL and is member of Assoc iat ion of Mutual Funds of India (AMFI) for distribution of financial products and Insurance Regulatory & Development Authority o f I ndia (IRDA) as Corporate Agent for insurance products. Details of associate entities of Motilal Oswal Financial Services Ltd. are available on the website at <http://onlinereports.motilaloswal.com/Dormant/documents/Associate%20Details.pdf>

Details of pending Enquiry Proceedings of Motilal Oswal Financial Services Limited are available on the website at <https://galaxy.motilaloswal.com/ResearchAnalyst/PublishViewLitigatio.aspx>

MOFSL, it’s associates, Research Analyst or their relatives may have any financial interest in the subject company. MOFSL and/or its associates and/or Research Analyst or their relatives may have actual beneficial ownership of 1% or more securities in th e subject company at the end of the month immediately preceding the date of publication of the Research Report or date of the p ubl ic appearance. MOFSL and its associate company(ies), their directors and Research Analyst and their relatives may have any other potential conflict of interests at the time of pu blication of the research report or at the time of public appearance, however the same shall have no bearing whatsoever on th e s pecific recommendations made by the analyst(s), as the recommendations made by the analyst(s) are completely independent of t he views of the associates of MOFSL even though there might exist an inherent conflict of interest in some of the stocks mentioned in the re search report..

In the past 12 months, MOFSL or any of its associates may have:

- a. Received any compensation/other benefits from the subject company of this report
- b. Managed or co managed public offering of securities from subject company of this research report,
- c. Received compensation for investment banking or merchant banking or brokerage services from subject company of this research report,
- d. Received compensation for products or services other than investment banking or merchant banking or brokerage services from t he subject company of this research report.
- MOFSL and it’s associates have not received any compensation or other benefits from the subject company or third party in con n ection with the research report.
- Subject Company may have been a client of MOFSL or its associates during twelve months preceding the date of distribution of t he research report.
- Research Analyst may have served as director/officer/employee in the subject company.
- MOFSL and research analyst may engage in market making activity for the subject company.

MOFSL and its associate company(ies), and Research Analyst and their relatives from time to time may

a) a long or short position in, act as principal in, and buy or sell the securities or derivatives thereof of companies mentioned herein.

(b) be engaged in any other transaction involving such securities and earn brokerage or other compensation or act as a market

maker in the financial instruments of the company(ies) discussed herein or act as an advisor or lender/borrower to such ies) or may have any other potential conflict of interests with respect to any recommendation and other related information and opi nions.; however the same shall have no bearing whatsoever on the specific recommendations made by the analyst(s), as the recommendations made by the analyst (are completely independent of the views of the associates of MOFSL even though there might exist an inherent conflict of interest in some of the stocks mentioned in the research report.

Above disclosures include beneficial holdings lying in demat account of MOFSL which are opened for proprietary investments only. While calculating beneficial holdings, It does not consid er demat accounts which are opened in name of MOFSL for other purposes ( i.e holding client securities, collaterals, error trades etc.). MOFSL also earns DP income from clients which are not considered in above disclosures.

To enhance transparency, MOFSL has incorporated a Disclosure of Interest Statement in this document. This should, however, not be treated as endorsement of the views expressed in the report. MOFSL and / or its affiliates do and seek to do business inclu din g investment banking with companies covered in its research reports. As a result, the recipients of this report should be awa re that MOFSL may have a potential conflict of interest that may affect the objectivity of this report.

Terms & Conditions:

This report has been prepared by MOFSL and is meant for sole use by the recipient and not for circulation. The report and inform ation contained herein is strictly confidential and may not be altered in any way, transmitted to, copied or distributed, in par t or in whole, to any other person or to the media or reproduced in any form, without prior written consent of MOFSL. The rep ort is based on the facts, figures and information that are considered true, correct, reliable and accurate. The intent of this report is not recommendatory in nature. The information is obtained from publicly available media or other sources believed to be reliable. Such information has not be en independently verified and no guaranty, representation of warranty, express or implied, is made as to its accuracy, completeness or correctness. All such information and opinions are subject to change without notice. The report is prepared solely for informational purpose and do es not constitute an offer document or solicitation of offer to buy or sell or subscribe for securities or other financial instr ume nts for the clients. Though disseminated to all the customers simultaneously, not all customers may receive this report at the same time. MOFSL will not treat recipients as customers by virtue of their receiving this report.

Analyst Certification

The views expressed in this research report accurately reflect the personal views of the analyst(s) about the subject securities or issues, and no part of the compensation of the research analyst(s) was, is, or will be directly or indirectly related to t he specific recommendations and views

expressed by research analyst(s) in this report. Disclosure of Interest Statement

Analyst ownership of the stock No

A graph of daily closing prices of securities is available at [www.nseindia.com](http://www.nseindia.com), [www.bseindia.com](http://www.bseindia.com). Research Analyst views on Subject Company may vary based on Fundamental research and Technical Research. Proprietary trading desk of MOFSL or its associate s m aintains arm’s length distance with Research Team as all the activities are segregated from MOFSL research activity and there for e it can have an independent view with regards to subject company for which Research Team have expressed their views.

Regional Disclosures (outside India)

This report is not directed or intended for distribution to or use by any person or entity resident in a state, country or any jurisdiction, where such distribution, publication, availability or use would be contrary to law, regulation or which would su bje ct MOFSL & its group companies to registration or

licensing requirements within such jurisdictions. For Hong Kong:

This report is distributed in Hong Kong by Motilal Oswal capital Markets (Hong Kong) Private Limited, a licensed corporation (CE AYY 301) licensed and regulated by the Hong Kong Securi ties and Futures Commission (SFC) pursuant to the Securities and Futures Ordinance (Chapter 571 of the Laws of Hong Kong) “SF O”. As per SEBI (Research Analyst Regulations) 2014 Motilal Oswal Financial Services Limited (SEBI Reg No. INH000000412) has an agreement with Motilal Oswal capital Markets (Hong Kong) Private Limited for distribution of research report in Hong Kong. This report is intended for dis tr ibution only to “Professional Investors” as defined in Part I of Schedule 1 to SFO. Any investment or investment activity to whi ch this document relates is only available to professional investor and will be engaged only with professional investors.” Nothing here is an offer or solicitation of these securities, products and services in any jurisdiction where the ir offer or sale is not qualified or exempt from registration. The Indian Analyst(s) who compile this report is/are not located in Hong Kong & are not conducting Research Analysis in Hong Kong.

Investment in securities market are subject to market risks, read all the related documents carefully before investing.

For U.S.

MOTILAL Oswal Financial Services Limited (MOFSL) is not a registered broker - dealer under the U.S. Securities Exchange Act of 1934, as amended (the"1934 act") and under applicable state laws in the United States. In addition MOFSL is not a registered investment adviser under the U.S. Investment Advisers Act of 1940, as amended (the "Advisers Act" and together with the 1934 Act, the "Acts), and under applicable state laws in the United States. Accordingly, in the absence of specific exemption under the Acts, any brokerage and investment services provided by MOFSL, including the products and services described herein are not available to or intended for U.S. persons. This report is intended for distribution only to "Major Institutional Investors" as defined by Rule 15a-6(b)(4) of the Exchange Act and interpretations thereof by SEC (henceforth referred to as "major institutional investors"). This document must not be acted on or relied on by persons who are not major institutional investors. Any investment or investment activity to which this document relates is only available to major institutional investors and will be engaged in only with major institutional investors. In reliance on the exemption from registration provided by Rule 15a-6 of the U.S. Securities Exchange Act of 1934, as amended (the "Exchange Act") and interpretations thereof by the U.S. Securities and Exchange Commission ("SEC") in order to conduct business with Institutional Investors based in the U.S., MOFSL has entered into a chaperoning agreement with a U.S. registered broker-dealer, Motilal Oswal Securities International Private Limited. ("MOSIPL"). Any business interaction pursuant to this report will have to be executed within the provisions of this chaperoning agreement.

The Research Analysts contributing to the report may not be registered /qualified as research analyst with FINRA. Such research analyst may not be associated persons of the U.S. registered broker-dealer, MOSIPL, and therefore, may not be subject to NASD rule 2711 and NYSE Rule 472 restrictions on communication with a subject company, public appearances and trading securities held by a research analyst account.

For Singapore

In Singapore, this report is being distributed by Motilal Oswal Capital Markets Singapore Pte Ltd (“MOCMSPL”) (Co.Reg. NO. 201129401Z) which is a holder of a capital markets services license and an exempt financial adviser in Singapore, as per the approved agreement under Paragraph 9 of Third Schedule of Securities and Futures Act (CAP 289) and Paragraph 11 of First Schedule of Financial Advisors Act (CAP 110) provided to MOCMSPL by Monetary Authority of Singapore. Persons in Singapore should contact MOCMSPL in respect of any matter arising from, or in connection with this report/publication/communication. This report is distributed solely to persons who qualify as “Institutional Investors”, of which some of whom may consist of "accredited" institutional investors as defined in section 4A(1) of the Securities and Futures Act, Chapter 289 of Singapore (“the SFA”).

Accordingly, if a Singapore person is not or ceases to be such an institutional investor, such Singapore Person must immediately discontinue any use of this Report and inform MOCMSPL.

Disclaimer:

This report is intended for distribution to Retail Investors.

The report and information contained herein is strictly confidential and meant solely for the selected recipient and may not be altered in any way, transmitted to, copied or distributed, in part or in whole, to any other person or to the media or reproduced in any form, without prior written consent. This report and information herein is solely for informational purpose and may not be used or considered as an offer document or solicitation of offer to buy or sell or subscribe for securities or other financial instruments. Nothing in this report constitutes investment, legal, accounting and tax advice or a representation that any investment or strategy is suitable or appropriate to your specific circumstances. The securities discussed and opinions expressed in this report may not be suitable for all investors, who must make their own investment decisions, based on their own investment objectives, financial positions and needs of specific recipient. This may not be taken in substitution for the exercise of independent judgment by any recipient. Each recipient of this document should make such investigations as it deems necessary to arrive at an independent evaluation of an investment in the securities of companies referred to in this document (including the merits and risks involved), and should consult its own advisors to determine the merits and risks of such an investment. The investment discussed or views expressed may not be suitable for all investors. Certain transactions -including those involving futures, options, another derivative products as well as non-investment grade securities - involve substantial risk and are not suitable for all investors. No representation or warranty, express or implied, is made as to the accuracy, completeness or fairness of the information and opinions contained in this document. The Disclosures of Interest Statement incorporated in this document is provided solely to enhance the transparency and should not be treated as endorsement of the views expressed in the report. This information is subject to change without any prior notice. The Company reserves the right to make modifications and alternations to this statement as may be required from time to time without any prior approval. MOFSL, its associates, their directors and the employees may from time to time, effect or have effected an own account transaction in, or deal as principal or agent in or for the securities mentioned in this document. They may perform or seek to perform investment banking or other services for, or solicit investment banking or other business from, any company referred to in this report. Each of these entities functions as a separate, distinct and independent of each other. The recipient should take this into account before interpreting the document. This report has been prepared on the basis of information that is already available in publicly accessible media or developed through analysis of MOFSL. The views expressed are those of the analyst, and the Company may or may not subscribe to all the views expressed therein. This document is being supplied to you solely for your information and may not be reproduced, redistributed or passed on, directly or indirectly, to any other person or published, copied, in whole or in part, for any purpose. This report is not directed or intended for distribution to, or use by, any person or entity who is a citizen or resident of or located in any locality, state, country or other jurisdiction, where such distribution, publication, availability or use would be contrary to law, regulation or which would subject MOFSL to any registration or licensing requirement within such jurisdiction. The securities described herein may or may not be eligible for sale in all jurisdictions or to certain category of investors. Persons in whose possession this document may come are required to inform themselves of and to observe such restriction. Neither the Firm, not its directors, employees, agents or representatives shall be liable for any damages whether direct or indirect, incidental, special or consequential including lost revenue or lost profits that may arise from or in connection with the use of the information. The person accessing this information specifically agrees to exempt MOFSL or any of its affiliates or employees from, any and all responsibility/liability arising from such misuse and agrees not to hold MOFSL or any of its affiliates or employees responsible for any such misuse and further agrees to hold MOFSL or any of its affiliates or employees free and harmless from all losses, costs, damages, expenses that may be suffered by the person accessing this information due to any errors and delays.

This report is meant for the clients of Motilal Oswal only.

Investment in securities market are subject to market risks. Read all the related documents carefully before investing.

Registration granted by SEBI and certification from NISM in no way guarantee performance of the intermediary or provide any assurance of returns to investors.

Registered Office Address: Motilal Oswal Tower, Rahimtullah Sayani Road, Opposite Parel ST Depot, Prabhadevi, Mumbai-400025; Tel No.: 022 - 71934200 / 71934263; www.motilaloswal.com. Correspondence Address: Palm Spring Centre, 2nd Floor, Palm Court Complex, New Link Road, Malad (West), Mumbai- 400 064. Tel No: 022 71881000. Details of Compliance Officer: Neeraj Agarwal, Email Id: na@motilaloswal.com, Contact No.:022-40548085.

Grievance Redressal Cell:

Contact Person	Contact No.	Email ID
Ms. Hemangi Date	022 40548000 / 022 67490600	query@motilaloswal.com
Ms. Kumud Upadhyay	022 40548082	servicehead@motilaloswal.com
Mr. Ajay Menon	022 40548083	am@motilaloswal.com

Registration details of group entities.: Motilal Oswal Financial Services Ltd. (MOFSL): INZ000158836 (BSE/NSE/MCX/NCDEX); CDSL and NSDL: IN-DP-16-2015; Research Analyst: INH000000412 . AMFI: ARN .: 146822. IRDA Corporate Agent – CA0579. Motilal Oswal Financial Services Ltd. is a distributor of Mutual Funds, PMS, Fixed Deposit, Insurance, Bond, NCDs and IPO products.

Customer having any query/feedback/ clarification may write to query@motilaloswal.com. In case of grievances for any of the services rendered by Motilal Oswal Financial Services Limited (MOFSL) write to grievances@motilaloswal.com, for DP to dpgrievances@motilaloswal.com.