

# Suzlon Energy

Estimate change	↔
TP change	↑
Rating change	↔

**CMP: INR65      TP: INR83 (+27%)      Buy**

## Strong 4QFY25; outlook upbeat

Bloomberg	SUEL IN
Equity Shares (m)	13649
M.Cap.(INRb)/(USDb)	892.9 / 10.4
52-Week Range (INR)	86 / 44
1, 6, 12 Rel. Per (%)	11/1/33
12M Avg Val (INR M)	4911

### Financials Snapshot (INR b)

Y/E March	FY25	FY26E	FY27E
Sales	108.9	168.7	229.6
EBITDA	18.6	27.9	40.2
Adj. PAT	14.7	23.2	32.4
EPS (INR)	1.1	1.7	2.4
EPS Gr. (%)	105.5	57.6	39.6
BV/Sh.(INR)	4.5	6.2	8.5

### Ratios

ND/Equity	-0.1	-0.3	-0.3
ND/EBITDA	-0.5	-0.9	-1.0
RoE (%)	29.4	31.9	32.2
RoIC (%)	9.2	11.3	13.9

### Valuations

P/E (x)	60.7	38.5	27.6
EV/EBITDA (x)	47.6	31.1	21.2

### Shareholding Pattern (%)

As On	Mar-25	Dec-24	Mar-24
Promoter	13.3	13.3	13.3
DII	8.7	9.3	6.3
FII	23.0	22.9	19.6
Others	55.0	54.6	60.9

- Suzlon Energy (Suzlon) delivered a strong set of results, with deliveries and EBITDA coming in ~15%/38% ahead of our expectations. Management maintained its positive outlook and guided at least 60% YoY improvement in deliveries, revenue, EBITDA, and adjusted PAT for FY26. This guidance is broadly in line with our/street estimates and highlights management's confidence in the sector.
- While FY27 guidance was not provided, management expects India-level wind installations to improve to 6/7-8/9GW in FY26/FY27/FY28 (FY25: 4.2GW). Following the earnings call, we largely maintain our FY26/27 earnings estimates but raise our TP to INR83. The early implementation of local content-related draft notification can be a strong catalyst for the stock.
- **Reiterate BUY**; our TP implies a 27% upside potential.

## Strong beat driven by robust WTG deliveries and margin expansion

### Financial performance:

- Suzlon's consolidated revenue came in at INR38b (+73% YoY, +27% QoQ), exceeding our estimates by 6% on account of higher-than-expected WTG deliveries (~15% higher than our estimate).
- EBITDA was 38% above our estimates at INR6.9b (+94% YoY, +39% QoQ), driven by a higher-than-expected gross margin.
- APAT exceeded our estimates by 44% and stood at INR5.8b (+108% YoY, +49% QoQ).
- Suzlon's reported PAT was INR11.8b, which includes a deferred tax asset creation of ~INR6b during the quarter.
- Its 4QFY25 WTG revenue grew 105% YoY to INR31.4b, EBIT surged 537% YoY to INR4.2b, and EBIT margin improved 500bp to 13%.
- FY25 revenue stood at INR109b (+67% YoY). EBITDA/APAT rose 81%/106% YoY to INR18.5b/INR14.7b as WTG deliveries more than doubled YoY.

### Operational performance:

- WTG order book stood at 5,555MW as of May'25.
- The segment mix comprised 55% C&I/Captive, 19% Auctions, and 26% PSU.
- Scope Mix stood at 76% non-EPC and 24% EPC.
- WTG deliveries stood at 573MW for 4QFY25, taking total FY25 deliveries to 1,550MW (up 118% YoY).
- WTG's contribution margin exceeded 23%, reflecting 360bp YoY expansion.
- A total of 95MW of WTGs were installed during the quarter, bringing FY25 installations to 336MW. An additional 371MW has been erected and is ready for commissioning.

### Highlights of the 4QFY25 performance

- **Order book & deliveries:** WTG order book exceeded 5.5GW as of May 2025, including 1.5GW from NTPC. FY25 deliveries stood at 1,550MW (+118% YoY), with 573MW delivered in 4QFY25.
- **4QFY25 financials:** Revenue came in at INR37.8b; EBITDA was INR6.9b (+95% YoY, +39% QoQ); and EBITDA margin expanded to 18.4% (+200 bps QoQ).
- **FY25 performance:** Revenue rose 67% YoY to INR109b; EBITDA and adjusted PAT grew 81% and 106% YoY to INR18.5b and INR14.7b, respectively. WTG EBITDA surged 392% YoY, and the contribution margin stood at 23.6%.
- **Balance sheet strength:** Net worth came in at INR61b; net cash position improved to INR19.4b.
- **FY26 outlook:** Management guided for at least 60% YoY growth across all key metrics. EPC pipeline expected to expand; export readiness in place, though current focus remains on domestic execution.

### Valuation and view

- We arrive at our TP of INR83 by applying a target P/E of 35x to FY27E EPS. This is at a slight premium to its historical average two-year fwd P/E of 27x, given execution and earnings are just picking up for Suzlon.

### Consolidated performance

Y/E March	(INR m)											
	FY24				FY25				FY24	FY25	FY25	Var. YoY
	1Q	2Q	3Q	4Q	1Q	2Q	3Q	4Q		4QE	(%)	(%)
<b>Net Sales</b>	<b>13,510</b>	<b>14,214</b>	<b>15,605</b>	<b>21,962</b>	<b>20,216</b>	<b>21,034</b>	<b>29,748</b>	<b>37,899</b>	<b>65,291</b>	<b>1,08,897</b>	<b>35,773</b>	<b>6</b>
YoY Change (%)	-2%	-1%	7%	30%	50%	48%	91%	73%	9%	83%		<b>73</b>
<b>EBITDA</b>	<b>1,988</b>	<b>2,250</b>	<b>2,476</b>	<b>3,574</b>	<b>3,701</b>	<b>2,942</b>	<b>4,995</b>	<b>6,935</b>	<b>10,289</b>	<b>18,572</b>	<b>5,026</b>	<b>38</b>
Margin (%)	15%	16%	16%	16%	18%	14%	17%	18%	16%	17%		<b>94</b>
Depreciation	546	512	395	444	458	544	662	928	1,896	2,592	662	40
Interest	620	437	143	443	445	560	695	847	1,643	2,548	519	63
Other Income	107	73	92	112	228	179	275	353	384	1,034	212	66
<b>PBT before EO expense</b>	<b>929</b>	<b>1,374</b>	<b>2,031</b>	<b>2,799</b>	<b>3,025</b>	<b>2,016</b>	<b>3,913</b>	<b>5,512</b>	<b>7,134</b>	<b>14,466</b>	<b>4,058</b>	
Extra-Ord income/(exp.)	82	-350	0	-271	0	0	0	5,999	-539	5,999	0	
<b>PBT</b>	<b>1,011</b>	<b>1,024</b>	<b>2,031</b>	<b>2,529</b>	<b>3,025</b>	<b>2,016</b>	<b>3,913</b>	<b>11,512</b>	<b>6,595</b>	<b>20,465</b>	<b>4,058</b>	<b>184</b>
Tax	2	2	1	-13	2	10	36	-298	-9	-251	4	
Rate (%)	0%	0%	0%	0%	0%	0%	1%	-3%	0%	-1%	0.0	
Share of JV & associates	0	0	0	0	0	0	0	0	0	0	0	
Minority Interest	0	0	0	0	0	4	8	-12	0	0	19	
<b>Reported PAT</b>	<b>1,009</b>	<b>1,023</b>	<b>2,030</b>	<b>2,541</b>	<b>3,023</b>	<b>2,002</b>	<b>3,869</b>	<b>11,822</b>	<b>6,603</b>	<b>20,716</b>	<b>4,035</b>	<b>193</b>
<b>Adj PAT</b>	<b>929</b>	<b>1,374</b>	<b>2,031</b>	<b>2,800</b>	<b>3,025</b>	<b>2,012</b>	<b>3,905</b>	<b>5,823</b>	<b>7,134</b>	<b>14,717</b>	<b>4,038</b>	<b>44</b>
YoY Change (%)	1063%	753%	162%	790%	226%	46%	92%	108%	437%	106%	0.4	<b>108</b>
Margin (%)	6.9	9.7	13.0	12.7	15.0	9.6	13.1	15.4	10.9	13.5	11.3	<b>206</b>

### Exhibit 1: Valuation table

Valuation		
EPS- FY27	INR	2.4
Valuation multiple	(x)	35
<b>Target Price</b>	<b>INR</b>	<b>83</b>
CMP	INR	65
<b>Upside / (Downside)</b>	<b>%</b>	<b>27%</b>

Source: MOFSL



## Highlights from the management commentary

### ■ Regulatory & industry outlook

- The draft RLMM policy is expected to provide a significant boost to the domestic wind energy supply chain, with an emphasis on the localization of R&D and data centers.
- Management highlighted that India already possesses adequate domestic manufacturing capacity to meet the requirements of the RLMM notification mandating local sourcing of key components. The country has 20GW nacelle, 29GW gearbox, 28GW blade, and 14.5GW generator manufacturing capacity. Hence, the argument of insufficient capacity is not valid.
- The industry outlook remains robust, with India projected to add 6GW of wind capacity in FY26, 7–8GW in FY27, and 9GW annually thereafter.
- Repowering of old wind sites is expected to gain momentum from end-FY26 onwards.

### ■ Operational performance

- Suzlon's WTG order book stood at over 5.5GW as of May 2025, including a 1.5GW PSU tender from NTPC.
- The S144 platform has received a strong market response, with the order book exceeding 5GW; it is entirely manufactured in India.
- The manufacturing capacity is 4.5GW, distributed across Daman, Pondicherry, Madhya Pradesh, and Rajasthan. The same setup can deliver up to 5.5GW annually with consistent demand.
- Suzlon delivered 1,550MW in FY25, including 573MW in Q4FY25, marking a 2x YoY increase.
- Installations in FY25 stood at 707MW (including 371MW erected/ready for commissioning).
- Suzlon's O&M portfolio exceeds 15GW, including over 3GW under Renom, its O&M subsidiary.

### ■ Financial performance

- Record financial performance in FY25, with the highest-ever revenue, EBITDA, and PAT since FY17.
- Q4FY25 Highlights:
  - Revenue: INR37.8b, EBITDA: INR6.93b (+95% YoY, +39% QoQ)
  - EBITDA margin: 18.4% (up 200bp QoQ)
- FY25 Highlights:
  - FY25 revenue stood at INR109b (+67% YoY). EBITDA/APAT surged 81%/ 106% YoY to INR18.5b/INR14.7b as WTG deliveries more than doubled YoY.
  - WTG business EBITDA jumped 392% YoY; WTG contribution margin stood at 23.6%
- Balance Sheet:
  - Consolidated net worth: INR61b
  - Net cash: INR 19.4b

### ■ Segmental margins & outlook

- WTG contribution margin stood at 23.6% in FY25 and is expected to be maintained at ~23% in FY26.
- Consolidated EBITDA margin was 17% in FY25 and is expected to remain stable in FY26.

#### ■ **FY26 guidance & strategic outlook**

- Management expects at least 60% YoY growth in FY26 across all key metrics: Deliveries, Revenue, EBITDA, and PAT.
- COD (Commercial Operation Date) growth is also expected to exceed 60%.
- Order inflow momentum remains strong and may accelerate further due to traction in the PSU segment. Management does not foresee any order visibility concerns over the next 18–24 months.
- The EPC pipeline is expected to grow steadily.
- Exports: While Suzlon is prepared for exports, the current focus remains on fulfilling India's demand.

#### ■ **Technology & product outlook**

- S144 turbine is well-suited to current market needs. A new variant of S144 may be introduced, but a completely new model will be launched only when needed.
- For low wind sites, rotor diameter and hub height are more critical than nameplate MW capacity.
- R&D investment is expected to increase from INR1.5b annually to INR2.25b in FY26.

#### ■ **Financial estimates & cost projections**

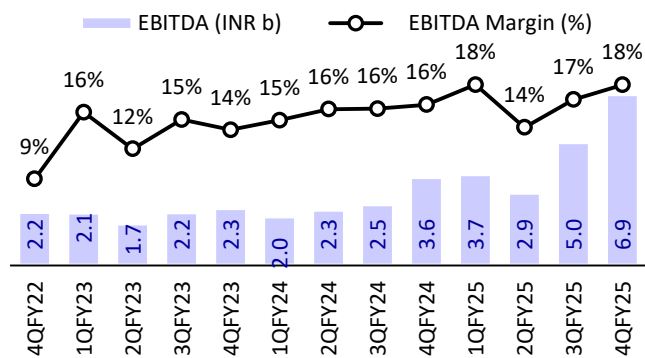
- Depreciation: INR0.9b in FY25 (vs. INR0.6b in FY24), due to Renom acquisition-related intangibles and IT assets. FY26 depreciation is likely to be INR3.5-4.0b.
- Interest Cost: INR1.5b in FY25; expected to rise to INR2.5b in FY26.
- Capex: INR3.5b in FY25. FY26 capex estimated at INR4–4.5b.

#### ■ **Sector & market commentary**

- Wind vs. Solar+BESS: Wind remains cost-competitive; solar + BESS is not yet a viable replacement unless storage cost drops dramatically.
- SE Forge is expected to diversify beyond wind, targeting domestic non-wind sectors and export markets.

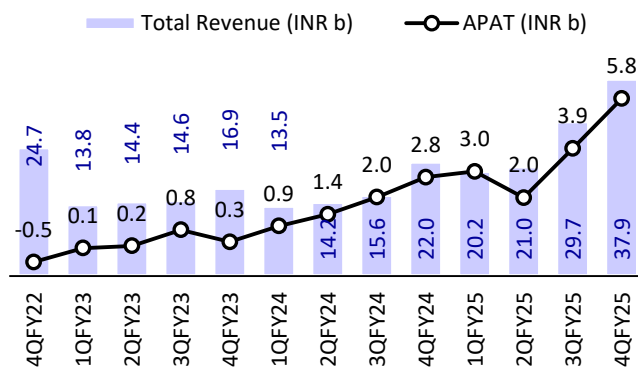
## Story in charts – 4QFY25

**Exhibit 1: EBITDA & EBITDA margin trends**



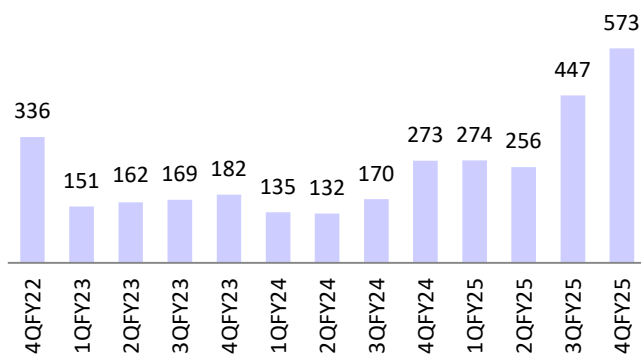
Source: Company, MOFSL

**Exhibit 2: Revenue & PAT trends (INRb)**



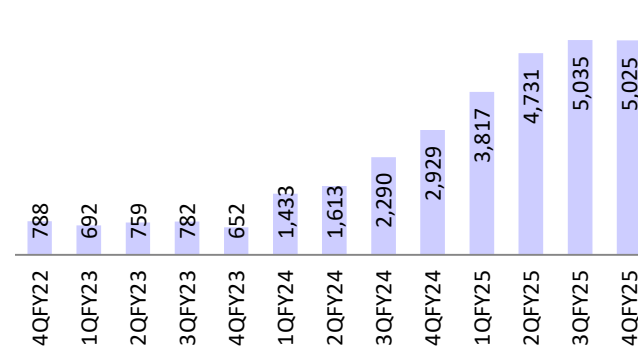
Source: Company, MOFSL

**Exhibit 3: Quarterly WTG deliveries (MW)**



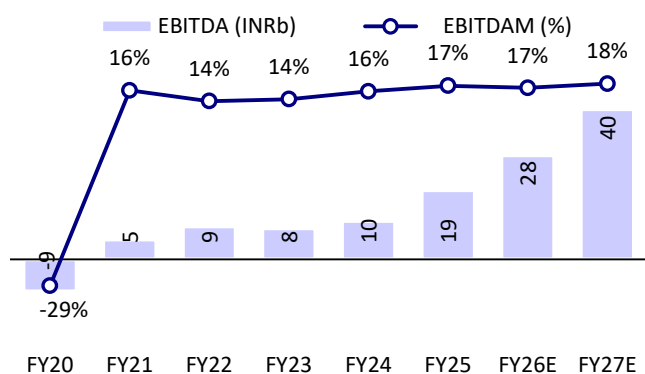
Source: Company, MOFSL

**Exhibit 4: Order book trend (MW)**



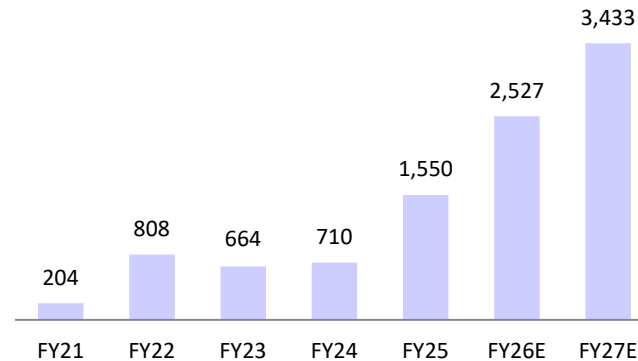
Source: Company, MOFSL

**Exhibit 5: EBITDA & EBITDA margin trends (annual)**



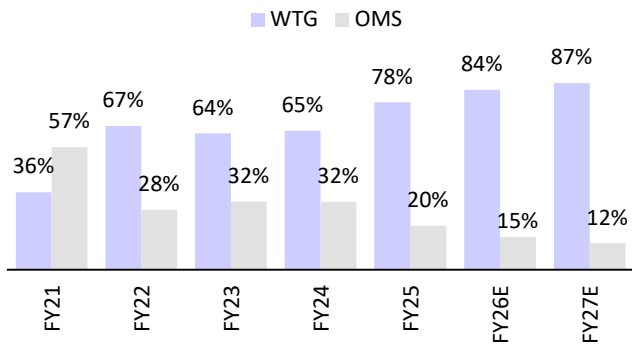
Source: Company, MOFSL

**Exhibit 6: Annual deliveries (MW)**



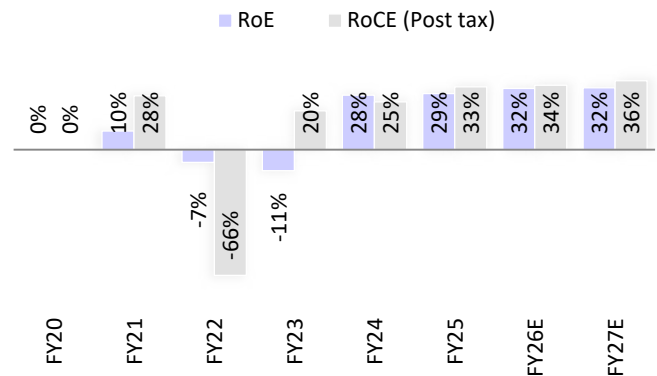
Source: Company, MOFSL

**Exhibit 7: Share of WTG and OMS in revenue**



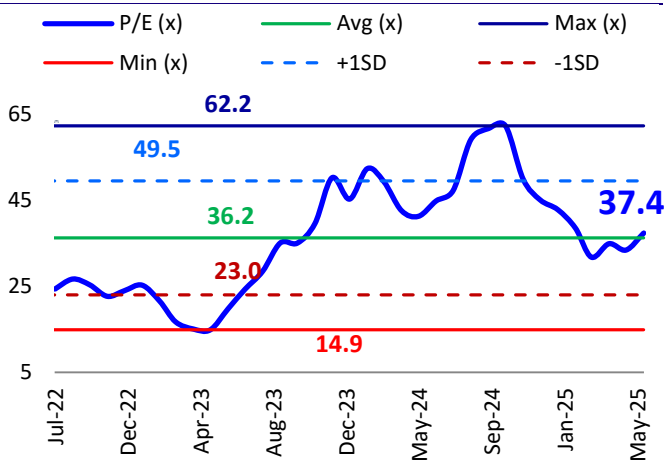
Source: Company, MOFSL

**Exhibit 8: RoE & RoCE over the years**



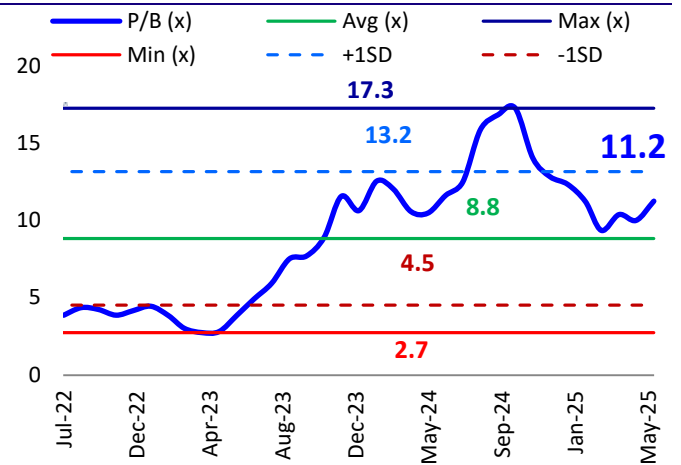
Source: Company, MOFSL

**Exhibit 9: One-year forward P/E**



Source: Company, MOFSL

**Exhibit 10: One-year forward P/B**



Source: Company, MOFSL

## Financials and valuations

Consolidated Income Statement					(INR m)
Y/E March	FY23	FY24	FY25	FY26E	FY27E
<b>Net Sales</b>	<b>59,705</b>	<b>65,291</b>	<b>1,08,897</b>	<b>1,68,654</b>	<b>2,29,636</b>
Change (%)	-9%	9%	67%	55%	36%
Total Expenses	51,386	55,002	90,325	1,40,728	1,89,414
<b>EBITDA</b>	<b>8,319</b>	<b>10,289</b>	<b>18,572</b>	<b>27,925</b>	<b>40,222</b>
EBITDAM (%)	13.9%	15.8%	17.1%	16.6%	17.5%
Depn. & Amortization	2,597	1,896	2,592	3,361	3,721
<b>EBIT</b>	<b>5,722</b>	<b>8,393</b>	<b>15,980</b>	<b>24,564</b>	<b>36,501</b>
Net Interest and finance cost	4,208	1,643	2,548	2,495	2,495
Other income	196	384	1,034	1,176	1,603
<b>PBT before extraordinary items</b>	<b>1,711</b>	<b>7,134</b>	<b>14,466</b>	<b>23,245</b>	<b>35,609</b>
EO income/ (expense)	27,206	-539	5,999	-	-
<b>PBT</b>	<b>28,917</b>	<b>6,595</b>	<b>20,465</b>	<b>23,245</b>	<b>35,609</b>
Tax	44	-9	-251	-	3,205
Rate (%)	0%	0%	-1%	0%	9%
JV/Associates	-	-	-	-	-
<b>Profit from continued operations</b>	<b>28,873</b>	<b>6,603</b>	<b>20,716</b>	<b>23,245</b>	<b>32,404</b>
Profit from Discontinued Operations before tax	-	-	-	-	-
Tax (Discontinued operations)	-	-	-	-	-
Minority	383	-	-	54	26
<b>Reported PAT</b>	<b>28,490</b>	<b>6,603</b>	<b>20,716</b>	<b>23,191</b>	<b>32,378</b>
<b>Adjusted PAT</b>	<b>1,328</b>	<b>7,134</b>	<b>14,717</b>	<b>23,191</b>	<b>32,378</b>
YoY change (%)	-42%	437%	106%	58%	40%

Consolidated Balance Sheet					(INRm)
Y/E March	FY23	FY24	FY25	FY26E	FY27E
Share Capital	24,544	27,217	27,318	27,318	27,318
Share Warrants & Outstanding	-	291	-	-	-
Reserves	-13,553	11,695	33,739	56,985	89,389
<b>Net Worth</b>	<b>10,991</b>	<b>39,203</b>	<b>61,057</b>	<b>84,302</b>	<b>1,16,707</b>
Minority Interest	-	-	-	-	-
Total Loans	19,049	1,100	2,641	5,241	5,241
<b>Capital Employed</b>	<b>30,040</b>	<b>40,303</b>	<b>63,698</b>	<b>89,543</b>	<b>1,21,948</b>
<b>Net Fixed Assets</b>	<b>8,369</b>	<b>8,595</b>	<b>12,740</b>	<b>12,879</b>	<b>13,157</b>
Capital WIP	26	162	887	1,387	1,887
Intangible assets under development	34	35	164	164	164
Investments	292	270	258	258	258
<b>Curr. Assets</b>	<b>46,512</b>	<b>62,728</b>	<b>1,15,547</b>	<b>1,49,609</b>	<b>1,96,859</b>
Account Receivables	11,704	18,296	38,664	44,087	60,088
Current Investments	-	84	429	829	1,229
Inventories	18,271	22,923	32,336	41,154	56,911
Cash and Cash Equivalents	3,673	4,268	11,128	30,548	45,639
Cash balance	3,673	2,496	9,011	28,430	43,522
Bank balance	-	1,773	2,118	2,118	2,118
Others	12,863	17,158	32,991	32,991	32,991
<b>Curr. Liability &amp; Prov.</b>	<b>25,194</b>	<b>31,488</b>	<b>65,898</b>	<b>74,753</b>	<b>90,377</b>
Account Payables	8,946	17,958	29,351	40,807	56,431
Provisions & Others	16,247	13,530	36,546	33,946	33,946
<b>Net Curr. Assets</b>	<b>21,319</b>	<b>31,241</b>	<b>49,650</b>	<b>74,856</b>	<b>1,06,481</b>
<b>Appl. of Funds</b>	<b>30,040</b>	<b>40,303</b>	<b>63,698</b>	<b>89,543</b>	<b>1,21,948</b>

## Financials and valuations

### Ratios

Y/E March (INR)	FY23	FY24	FY25	FY26E	FY27E
<b>Basic (INR)</b>					
EPS	0.1	0.5	1.1	1.7	2.4
Cash EPS	0.3	0.7	1.3	1.9	2.6
BV/Share	0.9	2.9	4.5	6.2	8.5
<b>Valuation (x)</b>					
P/E	604.2	124.8	60.7	38.5	27.6
Cash P/E	204.5	98.6	51.6	33.6	24.7
P/BV	73.0	22.7	14.6	10.6	7.7
EV/Sales	13.7	13.6	8.1	5.1	3.7
EV/EBITDA	98.3	86.2	47.6	31.1	21.2
<b>Return Ratios (%)</b>					
RoE	-11%	28%	29%	32%	32%
RoCE (Post tax)	20%	25%	33%	34%	36%
RoIC (Post tax)	6%	7%	9%	11%	14%
<b>Working Capital Ratios</b>					
Asset Turnover (x)	0.5	0.6	0.6	0.5	0.5
Inventory (Days)	111.7	128.1	108.4	89.1	90.5
Debtor (Days)	71.6	102.3	129.6	95.4	95.5
<b>Leverage Ratio (x)</b>					
Net Debt / EBITDA	1.8	-0.3	-0.5	-0.9	-1.0
Net Debt / Equity ratio	1.4	-0.1	-0.1	-0.3	-0.3

### Cash Flow Statement

Y/E March (INR)	FY23	FY24	FY25	FY26E	FY27E
<b>PBT</b>					
Depreciation	2,597	1,896	2,592	3,361	3,721
Interest	-196	-383	-1,030	2,495	2,495
Others	-21,070	3,501	3,809	-	-
(Inc)/Dec in WC	-5,188	-10,610	-8,902	-14,642	-32,158
Direct Taxes Paid	-149	-203	-15	-	-3,205
<b>CF from Operations</b>	<b>4,911</b>	<b>795</b>	<b>10,920</b>	<b>14,459</b>	<b>6,462</b>
(Inc)/Dec in FA	-142	-2,264	-3,684	-4,000	-4,500
Investments and others	991	748	-3,833	8,855	15,624
<b>CF from Investments</b>	<b>849</b>	<b>-1,516</b>	<b>-7,517</b>	<b>4,855</b>	<b>11,124</b>
Equity raised	10,797	20,652	1	-	-
Grants etc	-	-	-	-	-
Inc/(Dec) in Debt	-13,633	-18,265	4,432	2,600	-
Interest Paid	-4,253	-1,071	-1,002	-2,495	-2,495
Dividend Paid	-	-	-	-	-
<b>CF from Fin. Activity</b>	<b>-7,089</b>	<b>1,316</b>	<b>3,430</b>	<b>105</b>	<b>-2,495</b>
<b>Inc/Dec of Cash</b>	<b>-1,329</b>	<b>596</b>	<b>6,832</b>	<b>19,420</b>	<b>15,091</b>
Add: Beginning Balance	5,004	3,673	4,268	11,128	30,548
Effect of exchange difference	-	-	-	-	-
Cash and bank balances adjusted on sale and liquidation of subsidiary	2	1	-28	-	-
<b>Closing Balance</b>	<b>3,673</b>	<b>4,268</b>	<b>11,128</b>	<b>30,548</b>	<b>45,639</b>

Investment in securities market are subject to market risks. Read all the related documents carefully before investing.



Explanation of Investment Rating	
Investment Rating	Expected return (over 12-month)
BUY	>=15%
SELL	< - 10%
NEUTRAL	< - 10 % to 15%
UNDER REVIEW	Rating may undergo a change
NOT RATED	We have forward looking estimates for the stock but we refrain from assigning recommendation

\*In case the recommendation given by the Research Analyst is inconsistent with the investment rating legend for a continuous period of 30 days, the Research Analyst shall be within following 30 days take appropriate measures to make the recommendation consistent with the investment rating legend.

#### Disclosures

The following Disclosures are being made in compliance with the SEBI Research Analyst Regulations 2014 (herein after referred to as the Regulations).

Motilal Oswal Financial Services Ltd. (MOFSL) is a SEBI Registered Research Analyst having registration no. INH000000412. MOFSL, the Research Entity (RE) as defined in the Regulations, is engaged in the business of providing Stock broking services, Depository participant services & distribution of various financial products. MOFSL is a listed public company, the details in respect of which are available on [www.motilaloswal.com](http://www.motilaloswal.com). MOFSL (erstwhile Motilal Oswal Securities Limited - MOSL) is registered with the Securities & Exchange Board of India (SEBI) and is a registered Trading Member with National Stock Exchange of India Ltd. (NSE) and Bombay Stock Exchange Limited (BSE), Multi Commodity Exchange of India Limited (MCX) and National Commodity & Derivatives Exchange Limited (NCDEX) for its stock broking activities & is Depository participant with Central Depository Services Limited (CDSL) National Securities Depository Limited (NSDL), NERL, COMRIS and CCRL and is member of Association of Mutual Funds of India (AMFI) for distribution of financial products and Insurance Regulatory & Development Authority of India (IRDA) as Corporate Agent for insurance products. Details of associate entities of Motilal Oswal Financial Services Limited are available on the website at <http://onlinereports.motilaloswal.com/Dormant/documents/List%20of%20Associate%20companies.pdf>

MOFSL and its associate company(ies), their directors and Research Analyst and their relatives may; (a) from time to time, have a long or short position in, act as principal in, and buy or sell the securities or derivatives thereof of companies mentioned herein. (b) be engaged in any other transaction involving such securities and earn brokerage or other compensation or act as a market maker in the financial instruments of the company(ies) discussed herein or act as an advisor or lender/borrower to such company(ies) or may have any other potential conflict of interests with respect to any recommendation and other related information and opinions; however the same shall have no bearing whatsoever on the specific recommendations made by the analyst(s), as the recommendations made by the analyst(s) are completely independent of the views of the associates of MOFSL even though there might exist an inherent conflict of interest in some of the stocks mentioned in the research report.

MOFSL and / or its affiliates do and seek to do business including investment banking with companies covered in its research reports. As a result, the recipients of this report should be aware that MOFSL may have a potential conflict of interest that may affect the objectivity of this report. Compensation of Research Analysts is not based on any specific merchant banking, investment banking or brokerage service transactions. Details of pending Enquiry Proceedings of Motilal Oswal Financial Services Limited are available on the website at <https://galaxy.motilaloswal.com/ResearchAnalyst/PublishViewLitigation.aspx>

A graph of daily closing prices of securities is available at [www.nseindia.com](http://www.nseindia.com), [www.bseindia.com](http://www.bseindia.com). Research Analyst views on Subject Company may vary based on Fundamental research and Technical Research. Proprietary trading desk of MOFSL or its associates maintains arm's length distance with Research Team as all the activities are segregated from MOFSL research activity and therefore it can have an independent view with regards to Subject Company for which Research Team have expressed their views.

#### Regional Disclosures (outside India)

This report is not directed or intended for distribution to or use by any person or entity resident in a state, country or any jurisdiction, where such distribution, publication, availability or use would be contrary to law, regulation or which would subject MOFSL & its group companies to registration or licensing requirements within such jurisdictions.

#### For Hong Kong:

This report is distributed in Hong Kong by Motilal Oswal capital Markets (Hong Kong) Private Limited, a licensed corporation (CE AYY-301) licensed and regulated by the Hong Kong Securities and Futures Commission (SFC) pursuant to the Securities and Futures Ordinance (Chapter 571 of the Laws of Hong Kong) "SFO". As per SEBI (Research Analyst Regulations) 2014 Motilal Oswal Securities (SEBI Reg. No. INH000000412) has an agreement with Motilal Oswal capital Markets (Hong Kong) Private Limited for distribution of research report in Hong Kong. This report is intended for distribution only to "Professional Investors" as defined in Part I of Schedule 1 to SFO. Any investment or investment activity to which this document relates is only available to professional investor and will be engaged only with professional investors." Nothing here is an offer or solicitation of these securities, products and services in any jurisdiction where their offer or sale is not qualified or exempt from registration. The Indian Analyst(s) who compile this report is/are not located in Hong Kong & are not conducting Research Analysis in Hong Kong.

#### For U.S.

Motilal Oswal Financial Services Limited (MOFSL) is not a registered broker - dealer under the U.S. Securities Exchange Act of 1934, as amended (the "1934 act") and under applicable state laws in the United States. In addition MOFSL is not a registered investment adviser under the U.S. Investment Advisers Act of 1940, as amended (the "Advisers Act" and together with the 1934 Act, the "Acts"), and under applicable state laws in the United States. Accordingly, in the absence of specific exemption under the Acts, any brokerage and investment services provided by MOFSL, including the products and services described herein are not available to or intended for U.S. persons. This report is intended for distribution only to "Major Institutional Investors" as defined by Rule 15a-6(b)(4) of the Exchange Act and interpretations thereof by SEC (henceforth referred to as "major institutional investors"). This document must not be acted on or relied on by persons who are not major institutional investors. Any investment or investment activity to which this document relates is only available to major institutional investors and will be engaged in only with major institutional investors. In reliance on the exemption from registration provided by Rule 15a-6 of the U.S. Securities Exchange Act of 1934, as amended (the "Exchange Act") and interpretations thereof by the U.S. Securities and Exchange Commission ("SEC") in order to conduct business with Institutional Investors based in the U.S., MOFSL has entered into a chaperoning agreement with a U.S. registered broker-dealer, Motilal Oswal Securities International Private Limited. ("MOSIPL"). Any business interaction pursuant to this report will have to be executed within the provisions of this chaperoning agreement.

The Research Analysts contributing to the report may not be registered /qualified as research analyst with FINRA. Such research analyst may not be associated persons of the U.S. registered broker-dealer, MOSIPL, and therefore, may not be subject to NASD rule 2711 and NYSE Rule 472 restrictions on communication with a subject company, public appearances and trading securities held by a research analyst account.

#### For Singapore

In Singapore, this report is being distributed by Motilal Oswal Capital Markets (Singapore) Pte. Ltd. ("MOCMSPL") (UEN 201129401Z), which is a holder of a capital markets services license and an exempt financial adviser in Singapore. This report is distributed solely to persons who (a) qualify as "institutional investors" as defined in section 4A(1)(c) of the Securities and Futures Act of Singapore ("SFA") or (b) are considered "accredited investors" as defined in section 2(1) of the Financial Advisers Regulations of Singapore read with section 4A(1)(a) of the SFA. Accordingly, if a recipient is neither an "institutional investor" nor an "accredited investor", they must immediately discontinue any use of this Report and inform MOCMSPL.

In respect of any matter arising from or in connection with the research you could contact the following representatives of MOCMSPL. In case of grievances for any of the services rendered by MOCMSPL write to [grievances@motilaloswal.com](mailto:grievances@motilaloswal.com).

Nainesh Rajani

Email: [nainesh.rajani@motilaloswal.com](mailto:nainesh.rajani@motilaloswal.com)

Contact: (+65) 8328 0276

#### Specific Disclosures

- Research Analyst and/or his/her relatives do not have a financial interest in the subject company(ies), as they do not have equity holdings in the subject company(ies). MOFSL has financial interest in the subject company(ies) at the end of the week immediately preceding the date of publication of the Research Report: Yes.  
Nature of Financial interest is holding equity shares or derivatives of the subject company
- Research Analyst and/or his/her relatives do not have actual/beneficial ownership of 1% or more securities in the subject company(ies) at the end of the month immediately preceding the date of publication of Research Report.  
MOFSL has actual/beneficial ownership of 1% or more securities of the subject company(ies) at the end of the month immediately preceding the date of publication of Research Report: No
- Research Analyst and/or his/her relatives have not received compensation/other benefits from the subject company(ies) in the past 12 months.  
MOFSL may have received compensation from the subject company(ies) in the past 12 months.
- Research Analyst and/or his/her relatives do not have material conflict of interest in the subject company at the time of publication of research report.  
MOFSL does not have material conflict of interest in the subject company at the time of publication of research report.
- Research Analyst has not served as an officer, director or employee of subject company(ies).

6. MOFSL has not acted as a manager or co-manager of public offering of securities of the subject company in past 12 months.
7. MOFSL has not received compensation for investment banking /merchant banking/brokerage services from the subject company(ies) in the past 12 months.
8. MOFSL may have received any compensation for products or services other than investment banking or merchant banking or brokerage services from the subject company(ies) in the past 12 months.
9. MOFSL may have received compensation or other benefits from the subject company(ies) or third party in connection with the research report.
10. MOFSL has not engaged in market making activity for the subject company.

The associates of MOFSL may have:

financial interest in the subject company

actual/beneficial ownership of 1% or more securities in the subject company at the end of the month immediately preceding the date of publication of the Research Report or date of the public appearance.

received compensation/other benefits from the subject company in the past 12 months

any other potential conflict of interests with respect to any recommendation and other related information and opinions.; however the same shall have no bearing whatsoever on the specific recommendations made by the analyst(s), as the recommendations made by the analyst(s) are completely independent of the views of the associates of MOFSL even though there might exist an inherent conflict of interest in some of the stocks mentioned in the research report.

acted as a manager or co-manager of public offering of securities of the subject company in past 12 months

be engaged in any other transaction involving such securities and earn brokerage or other compensation or act as a market maker in the financial instruments of the company(ies) discussed herein or act as an advisor or lender/borrower to such company(ies)

received compensation from the subject company in the past 12 months for investment banking / merchant banking / brokerage services or from other than said services.

Served subject company as its clients during twelve months preceding the date of distribution of the research report.

The associates of MOFSL has not received any compensation or other benefits from third party in connection with the research report

Above disclosures include beneficial holdings lying in demat account of MOFSL which are opened for proprietary investments only. While calculating beneficial holdings, It does not consider demat accounts which are opened in name of MOFSL for other purposes (i.e holding client securities, collaterals, error trades etc.). MOFSL also earns DP income from clients which are not considered in above disclosures.

Analyst Certification

The views expressed in this research report accurately reflect the personal views of the analyst(s) about the subject securities or issues, and no part of the compensation of the research analyst(s) was, is, or will be directly or indirectly related to the specific recommendations and views expressed by research analyst(s) in this report.

Terms & Conditions:

This report has been prepared by MOFSL and is meant for sole use by the recipient and not for circulation. The report and information contained herein is strictly confidential and may not be altered in any way, transmitted to, copied or distributed, in part or in whole, to any other person or to the media or reproduced in any form, without prior written consent of MOFSL. The report is based on the facts, figures and information that are considered true, correct, reliable and accurate. The intent of this report is not recommendatory in nature. The information is obtained from publicly available media or other sources believed to be reliable. Such information has not been independently verified and no guaranty, representation of warranty, express or implied, is made as to its accuracy, completeness or correctness. All such information and opinions are subject to change without notice. The report is prepared solely for informational purpose and does not constitute an offer document or solicitation of offer to buy or sell or subscribe for securities or other financial instruments for the clients. Though disseminated to all the customers simultaneously, not all customers may receive this report at the same time. MOFSL will not treat recipients as customers by virtue of their receiving this report.

Disclaimer:

The report and information contained herein is strictly confidential and meant solely for the selected recipient and may not be altered in any way, transmitted to, copied or distributed, in part or in whole, to any other person or to the media or reproduced in any form, without prior written consent. This report and information herein is solely for informational purpose and may not be used or considered as an offer document or solicitation of offer to buy or sell or subscribe for securities or other financial instruments. Nothing in this report constitutes investment, legal, accounting and tax advice or a representation that any investment or strategy is suitable or appropriate to your specific circumstances. The securities discussed and opinions expressed in this report may not be suitable for all investors, who must make their own investment decisions, based on their own investment objectives, financial positions and needs of specific recipient. This may not be taken in substitution for the exercise of independent judgment by any recipient. Each recipient of this document should make such investigations as it deems necessary to arrive at an independent evaluation of an investment in the securities of companies referred to in this document (including the merits and risks involved), and should consult its own advisors to determine the merits and risks of such an investment. The investment discussed or views expressed may not be suitable for all investors. Certain transactions -including those involving futures, options, another derivative products as well as non-investment grade securities - involve substantial risk and are not suitable for all investors. No representation or warranty, express or implied, is made as to the accuracy, completeness or fairness of the information and opinions contained in this document. The Disclosures of Interest Statement incorporated in this document is provided solely to enhance the transparency and should not be treated as endorsement of the views expressed in the report. This information is subject to change without any prior notice. The Company reserves the right to make modifications and alternations to this statement as may be required from time to time without any prior approval. MOFSL, its associates, their directors and the employees may from time to time, effect or have effected an own account transaction in, or deal as principal or agent in or for the securities mentioned in this document. They may perform or seek to perform investment banking or other services for, or solicit investment banking or other business from, any company referred to in this report. Each of these entities functions as a separate, distinct and independent of each other. The recipient should take this into account before interpreting the document. This report has been prepared on the basis of information that is already available in publicly accessible media or developed through analysis of MOFSL. The views expressed are those of the analyst, and the Company may or may not subscribe to all the views expressed therein. This document is being supplied to you solely for your information and may not be reproduced, redistributed or passed on, directly or indirectly, to any other person or published, copied, in whole or in part, for any purpose. This report is not directed or intended for distribution to, or use by, any person or entity who is a citizen or resident of or located in any locality, state, country or other jurisdiction, where such distribution, publication, availability or use would be contrary to law, regulation or which would subject MOFSL to any registration or licensing requirement within such jurisdiction. The securities described herein may or may not be eligible for sale in all jurisdictions or to certain category of investors. Persons in whose possession this document may come are required to inform themselves of and to observe such restriction. Neither the Firm, not its directors, employees, agents or representatives shall be liable for any damages whether direct or indirect, incidental, special or consequential including lost revenue or lost profits that may arise from or in connection with the use of the information. The person accessing this information specifically agrees to exempt MOFSL or any of its affiliates or employees from, any and all responsibility/liability arising from such misuse and agrees not to hold MOFSL or any of its affiliates or employees responsible for any such misuse and further agrees to hold MOFSL or any of its affiliates or employees free and harmless from all losses, costs, damages, expenses that may be suffered by the person accessing this information due to any errors and delays.

This report is meant for the clients of Motilal Oswal only.

Investment in securities market are subject to market risks. Read all the related documents carefully before investing.

Registration granted by SEBI and certification from NISM in no way guarantee performance of the intermediary or provide any assurance of returns to investors.

Registered Office Address: Motilal Oswal Tower, Rahimtullah Sayani Road, Opposite Parel ST Depot, Prabhadevi, Mumbai-400025; Tel No.: 022 - 71934200 / 71934263;

www.motilaloswal.com. Correspondence Address: Palm Spring Centre, 2nd Floor, Palm Court Complex, New Link Road, Malad (West), Mumbai- 400 064. Tel No: 022 71881000. Details of Compliance Officer: Neeraj Agarwal, Email Id: na@motilaloswal.com, Contact No.:022-40548085.

Grievance Redressal Cell:

Contact Person	Contact No.	Email ID
Ms. Hemangi Date	022 40548000 / 022 67490600	query@motilaloswal.com
Ms. Kumud Upadhyay	022 40548082	servicehead@motilaloswal.com
Mr. Ajay Menon	022 40548083	am@motilaloswal.com

Registration details of group entities.: Motilal Oswal Financial Services Ltd. (MOFSL): INZ000158836 (BSE/NSE/MCX/NCDEX); CDSL and NSDL: IN-DP-16-2015; Research Analyst: INH000000412. AMFI: ARN : 146822. IRDA Corporate Agent – CA0579. Motilal Oswal Financial Services Ltd. is a distributor of Mutual Funds, PMS, Fixed Deposit, Insurance, Bond, NCDs and IPO products.

Customer having any query/feedback/ clarification may write to query@motilaloswal.com. In case of grievances for any of the services rendered by Motilal Oswal Financial Services Limited (MOFSL) write to grievances@motilaloswal.com, for DP to dpgrievances@motilaloswal.com.