

Most
Market
 **OUTLOOK**

Technical Pick: (2-3 Days)

Stock Names	Close Price	SL	TP
Samvardhana Motherson (Buy)	204	197	218

Fundamental Pick: (1 Year)

NTPC : Positive

(CMP : 414)

Top 5 Investment Idea

Stock Name	TP	Upside
L&T Finance	230	30%
HDFC Life	900	29%
Coal India	600	23%
Godrej Consumer	1700	19%
HPCL	460	13%

Quant Picks:

Quant Weekly Buy Picks:

Reco Date	Stock Names	Close Price	SL (3%)	TP (4%)
16-09-2024	JINDAL STEEL (Hold)	1,025	994	1,066
17-09-2024	ABFRL (Hold)	335	325	348
18-09-2024	KOTAKBANK (Hold)	1,840	1,785	1,913
18-09-2024	AXISBANK (Hold)	1,240	1,203	1,290
19-09-2024	JUBLIPHARMA (Buy)	1,199	1,163	1,247
19-09-2024	IIFL (Buy)	529	513	550

Quant Intraday Sell Idea:

Stock Names	Close Price	SL (1%)	TP (2%)
ITC (Sell)	507	512	497
SCHNEIDER (Sell)	767	774	751

- Market is expected to open on a positive note following the US Federal Reserve's unexpected 50 basis point interest rate cut while expectation of 25bps cut interest rate.
- This aggressive move, coupled with indications of further rate cuts in the coming years, suggests the Fed is confident in sustainable inflation trends and aims to prevent economic strain from prolonged high rates.
- As a result, the Japanese market reacted positively, surging 800 points (2%), while US futures rose by 0.5%.
- Gift Nifty is flat to positive. Focus on Banks, NBFC, Auto, Sugar and Metal related stocks.

Index Levels :

Nifty Cash	R1	R2	S1	S2
25,377	25550	25750	25250	25150
BankNifty Cash	R1	R2	S1	S2
52750	53000	53357	52350	52000

Global Market Summary:

- US market closed in red after US Fed aggressively cut interest rate by 50bps.
- Dow Futures is trading 157 points higher.
- European indices ended in red yesterday.
- Asian markets today, are trading in green.
- **Global Cues: Mixed**

Indian Market Summary:

- Nifty consolidated after making a fresh high and closed with a loss of 41 points at 25378 levels.
- FIIs: +Rs1154 crore DIIs: +Rs152 crore.
- Currently GIFT Nifty is trading 71 points higher.
- **Domestic Cues: Positive**

News and Impact :

IREDA: The Government of India has approved the dilution of up to 7% of IREDA's shareholding in one or more tranches through the Qualified Institutions Placement (QIP) route. **Impact: Positive**

Garden Reach : The company has received a \$54-million order for the construction and delivery of four additional multi-purpose vessels from Germany-based Carsten Rehder Schiffsmakler and Reederei GmbH & Co. **Impact: Positive**

NTPC: CMP INR414

- NTPC Green Energy files draft papers for Rs 10,000-crore IPO.
- The IPO comes at a time when NTPC is looking for other energy avenues to diversify into and bolster revenues.
- NTPC Green Energy said it will use the proceeds from the fresh issue to repay loans worth 75 billion rupees taken by its unit NTPC Renewable Energy.

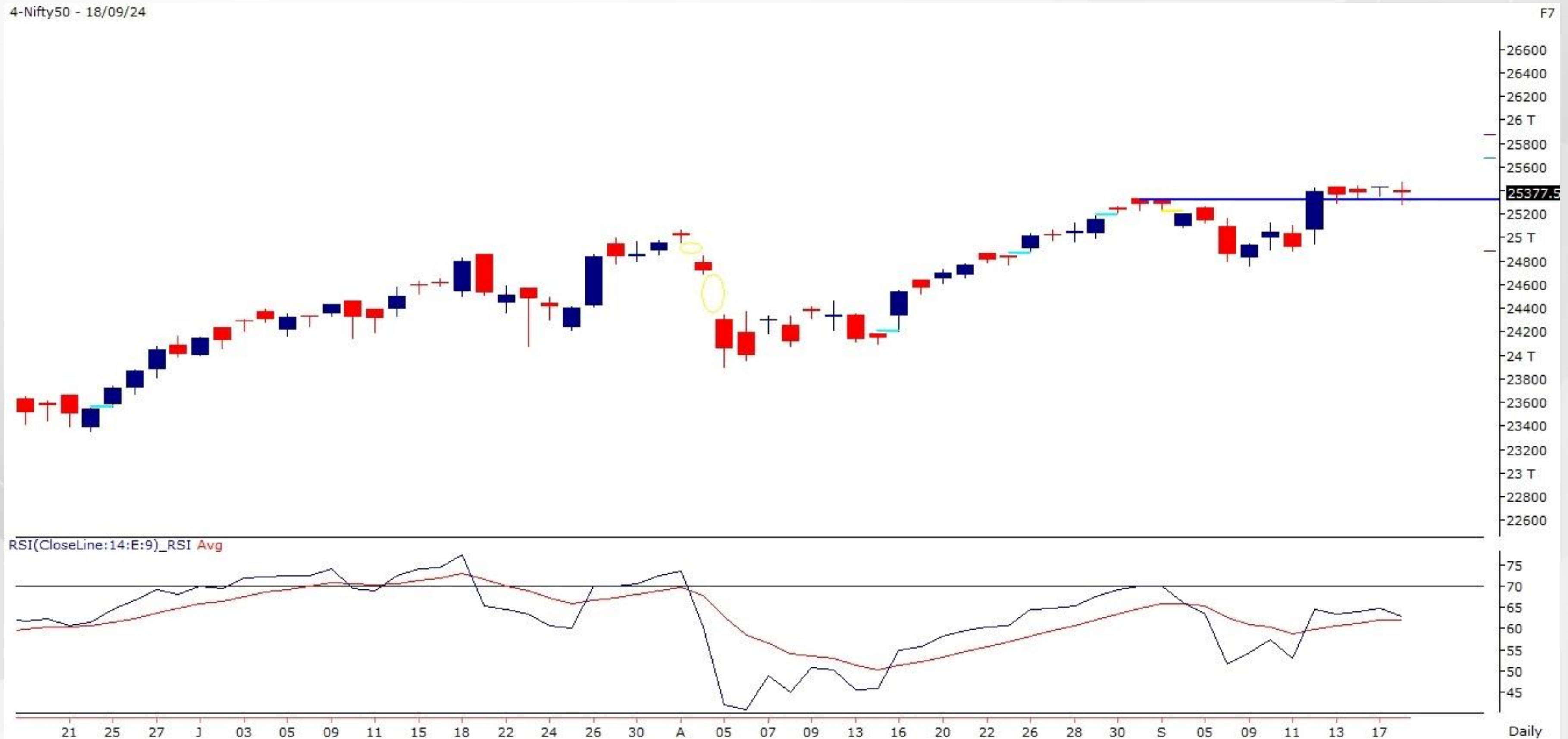
View: Positive

Cholamandalam Invt. & Fin.: CMP INR1586

- The 50bps rate cut by US Fed will be positive for NBFCs.
- We are positive on Chola as it is equipped to deliver strong AUM growth with benign credit costs (vs. peers), leading to a strong RoE of ~21-22% across economic cycles.
- The management expects vehicle finance (VF) yields to improve, with marginal yields around ~40bp higher than book yields. This will reflect in book yields over the next 3-4 quarters.
- We expect NIMs to expand to ~7.0%/7.1% in FY25/FY26 (vs. ~6.7% in FY24). . We estimate an AUM CAGR of ~27% over FY24-26.

View: Positive

NIFTY (CMP : 25377) Nifty immediate support at 25250 then 25150 zones while resistance at 25550 then 25750 zones. Now it has to hold above 25350 zones for an up move towards 25550 then 25750 zones whereas supports are placed at 25250 then 25150 zones.



BANK NIFTY (CMP : 52750) Bank Nifty support at 52350 then 52000 zones while resistance at 53000 then 53357 zones. Now it has to continue to hold above 52500 zones for an up move towards 53000 then 53357 marks while on the downside support shift higher at 52350 then 52000 levels.



Technical Trading Idea

Samvardhana Motherson: Buy CMP : 204 Target : 218 SL : 187 Duration : 2-3 Days

- Stock has broken out on the upside from a double bottom pattern with large buying volumes. It is on the verge of giving box breakout on weekly scale. The RSI momentum indicator has turned up which confirms the bullish move.



- Nifty September future closed at 25,396.10 with a premium of 18.55 point v/s 31.25 point premium in the last session.
- Nifty futures OI decreased by 2.23% to 1.54 Cr and Bank Nifty futures OI decreased by 1.31% to 24.20 Lakhs.
- Nifty Put/Call Ratio (OI) decreased from 1.30 to 1.13 level.
- On option front, Maximum Call OI is at 26000 then 25400 strike while Maximum Put OI is at 25000 then 24500 strike. Call writing is seen at 25500 then 25400 strike while Put writing is seen at 24500 then 24800 strike. Option data suggests a broader trading range in between 24800 to 25800 zones while an immediate range between 25200 to 25600 levels.

- **Option Buying:** Buy Weekly Nifty 25400 Call till it holds above 25350 zones. Buy Bank Nifty 53500 Call till it holds above 52500 zones.
- **Option Strategy:** Nifty Weekly Bull Call Spread (Buy 25400 CE and Sell 25550 CE) at net premium cost of 40-50 points. Bank Nifty Bull Call Spread (Buy 52800 CE and Sell 53200 CE) at net premium cost of 170-190 points.
- **Option Writing:** Sell Weekly Nifty 24700 PE and 25800 CE with strict double SL. Sell Bank Nifty 50000 PE and 55000 CE with strict double SL.

What are the rules?.

1. Weekly Buy Ideas:

- Stock names will be given at market open (9:15 am)
- Recommended time to entry: between 9:15 to 9:30 am.
- Entry: We go long for a week (5 trading days)
- Exit: We Sell after a week of it's recommendation
- SL: is placed at 2% of the entry price
- Book Profit: is placed at 4% of the entry price

Today's Techno Quant Weekly Buy Ideas:

Reco Date	Stock Names	Close Price	SL (3%)	TP (4%)	Expected Close Date
16-09-2024	JINDAL STEEL (Hold)	1,025	994	1,066	20-09-2024
17-09-2024	ABFRL (Hold)	335	325	348	23-09-2024
18-09-2024	KOTAKBANK (Hold)	1,840	1,785	1,913	24-09-2024
18-09-2024	AXISBANK (Hold)	1,240	1,203	1,290	24-09-2024
19-09-2024	JUBLIPHARMA (Buy)	1,199	1,163	1,247	25-09-2024
19-09-2024	IIFL (Buy)	529	513	550	25-09-2024

What is this?

Based on technical indicators this strategy gives 2 stocks that have a high likelihood to fall during the day (from open to close). This is an intraday Sell strategy which can provide a good cushioning during a black swan event.

Today's **Sell** Ideas:

Stock Names	Close Price	SL (1%)	TP (2%)
ITC (Sell)	507	512	497
SCHNEIDER (Sell)	767	774	751

What are the rules?

- Stock names will be given at market open (9:15 am)
- Recommended time to entry: between 9:15 to 9:30 am.
- Entry: We short 2 stocks daily (intraday)
- Exit: we will exit at 3:15 as this is an intraday call
- SL: is placed at 1% of the open.
- Book profit: At 2% fall since open.
- In special situations the book profit might be delayed if the stock is in free fall.

Siddhartha Khemka Head - Retail Research

Chandan Taparia, CMT, CFTe Derivatives & Technical Analyst

Neil Jha , Head – Quant Products

Disclosures:

The following Disclosures are being made in compliance with the SEBI Research Analyst Regulations 2014 (herein after referred to as the Regulations).

Motilal Oswal Financial Services Ltd. (MOFSL) is a SEBI Registered Research Analyst having registration no. INH000000412. MOFSL, the Research Entity (RE) as defined in the Regulations, is engaged in the business of providing Stock broking services, Depository participant services & distribution of various financial products. MOFSL is a listed public company, the details in respect of which are available on www.motilaloswal.com. MOFSL is registered with the Securities & Exchange Board of India (SEBI) and is a registered Trading Member with National Stock Exchange of India Ltd. (NSE) and Bombay Stock Exchange Limited (BSE), Multi Commodity Exchange of India Limited (MCX) and National Commodity & Derivatives Exchange Limited (NCDEX) for its stock broking activities & is Depository participant with Central Depository Services Limited (CDSL) National Securities Depository Limited (NSDL), NERL, COMRIS and CCRL and is member of Association of Mutual Funds of India (AMFI) for distribution of financial products and Insurance Regulatory & Development Authority of India (IRDA) as Corporate Agent for insurance products. Details of associate entities of Motilal Oswal Financial Services Ltd. are available on the website at <http://onlinereports.motilaloswal.com/Dormant/documents/Associate%20Details.pdf>

Details of pending Enquiry Proceedings of Motilal Oswal Financial Services Limited are available on the website at <https://galaxy.motilaloswal.com/ResearchAnalyst/PublishViewLitigation.aspx>

MOFSL, it's associates, Research Analyst or their relatives may have any financial interest in the subject company. MOFSL and/or its associates and/or Research Analyst or their relatives may have actual beneficial ownership of 1% or more securities in the subject company at the end of the month immediately preceding the date of publication of the Research Report or date of the public appearance. MOFSL and its associate company(ies), their directors and Research Analyst and their relatives may have any other potential conflict of interests at the time of publication of the research report or at the time of public appearance, however the same shall have no bearing whatsoever on the specific recommendations made by the analyst(s), as the recommendations made by the analyst(s) are completely independent of the views of the associates of MOFSL even though there might exist an inherent conflict of interest in some of the stocks mentioned in the research report..

In the past 12 months, MOFSL or any of its associates may have:

- received any compensation/other benefits from the subject company of this report
- managed or co-managed public offering of securities from subject company of this research report,
- received compensation for investment banking or merchant banking or brokerage services from subject company of this research report,
- received compensation for products or services other than investment banking or merchant banking or brokerage services from the subject company of this research report.

- MOFSL and it's associates have not received any compensation or other benefits from the subject company or third party in connection with the research report.
- Subject Company may have been a client of MOFSL or its associates during twelve months preceding the date of distribution of the research report.
- Research Analyst may have served as director/officer/employee in the subject company.
- MOFSL and research analyst may engage in market making activity for the subject company.

MOFSL and its associate company(ies), and Research Analyst and their relatives from time to time may have:

a) a long or short position in, act as principal in, and buy or sell the securities or derivatives thereof of companies mentioned herein.

(b) be engaged in any other transaction involving such securities and earn brokerage or other compensation or act as a market maker in the financial instruments of the company(ies) discussed herein or act as an advisor or lender/borrower to such company(ies) or may have any other potential conflict of interests with respect to any recommendation and other related information and opinions.; however the same shall have no bearing whatsoever on the specific recommendations made by the analyst(s), as the recommendations made by the analyst(s) are completely independent of the views of the associates of MOFSL even though there might exist an inherent conflict of interest in some of the stocks mentioned in the research report.

Above disclosures include beneficial holdings lying in demat account of MOFSL which are opened for proprietary investments only. While calculating beneficial holdings, It does not consider demat accounts which are opened in name of MOFSL for other purposes (i.e holding client securities, collaterals, error trades etc.). MOFSL also earns DP income from clients which are not considered in above disclosures.

To enhance transparency, MOFSL has incorporated a Disclosure of Interest Statement in this document. This should, however, not be treated as endorsement of the views expressed in the report. MOFSL and / or its affiliates do and seek to do business including investment banking with companies covered in its research reports. As a result, the recipients of this report should be aware that MOFSL may have a potential conflict of interest that may affect the objectivity of this report.

Terms & Conditions:

This report has been prepared by MOFSL and is meant for sole use by the recipient and not for circulation. The report and information contained herein is strictly confidential and may not be altered in any way, transmitted to, copied or distributed, in part or in whole, to any other person or to the media or reproduced in any form, without prior written consent of MOFSL. The report is based on the facts, figures and information that are considered true, correct, reliable and accurate. The intent of this report is not recommendatory in nature. The information is obtained from publicly available media or other sources believed to be reliable. Such information has not been independently verified and no guaranty, representation of warranty, express or implied, is made as to its accuracy, completeness or correctness. All such information and opinions are subject to change without notice. The report is prepared solely for informational purpose and does not constitute an offer document or solicitation of offer to buy or sell or subscribe for securities or other financial instruments for the clients. Though disseminated to all the customers simultaneously, not all customers may receive this report at the same time. MOFSL will not treat recipients as customers by virtue of their receiving this report.

Analyst Certification

The views expressed in this research report accurately reflect the personal views of the analyst(s) about the subject securities or issues, and no part of the compensation of the research analyst(s) was, is, or will be directly or indirectly related to the specific recommendations and views expressed by research analyst(s) in this report.

Disclosure of Interest Statement

Analyst ownership of the stock No

A graph of daily closing prices of securities is available at www.nseindia.com, www.bseindia.com. Research Analyst views on Subject Company may vary based on Fundamental research and Technical Research. Proprietary trading desk of MOFSL or its associates maintains arm's length distance with Research Team as all the activities are segregated from MOFSL research activity and therefore it can have an independent view with regards to subject company for which Research Team have expressed their views.

Regional Disclosures (outside India)

This report is not directed or intended for distribution to or use by any person or entity resident in a state, country or any jurisdiction, where such distribution, publication, availability or use would be contrary to law, regulation or which would subject MOFSL & its group companies to registration or licensing requirements within such jurisdictions.

For Hong Kong:

This report is distributed in Hong Kong by Motilal Oswal capital Markets (Hong Kong) Private Limited, a licensed corporation (CE AYY-301) licensed and regulated by the Hong Kong Securities and Futures Commission (SFC) pursuant to the Securities and Futures Ordinance (Chapter 571 of the Laws of Hong Kong) "SFO". As per SEBI (Research Analyst Regulations) 2014 Motilal Oswal Financial Services Limited (SEBI Reg No. INH000000412) has an agreement with Motilal Oswal capital Markets (Hong Kong) Private Limited for distribution of research report in Hong Kong. This report is intended for distribution only to "Professional Investors" as defined in Part I of Schedule 1 to SFO. Any investment or investment activity to which this document relates is only available to professional investor and will be engaged only with professional investors." Nothing here is an offer or solicitation of these securities, products and services in any jurisdiction where their offer or sale is not qualified or exempt from registration. The Indian Analyst(s) who compile this report is/are not located in Hong Kong & are not conducting Research Analysis in Hong Kong.

For U.S.

MOTILAL Oswal Financial Services Limited (MOFSL) is not a registered broker - dealer under the U.S. Securities Exchange Act of 1934, as amended (the "1934 act") and under applicable state laws in the United States. In addition MOFSL is not a registered investment adviser under the U.S. Investment Advisers Act of 1940, as amended (the "Advisers Act" and together with the 1934 Act, the "Acts"), and under applicable state laws in the United States. Accordingly, in the absence of specific exemption under the Acts, any brokerage and investment services provided by MOFSL, including the products and services described herein are not available to or intended for U.S. persons. This report is intended for distribution only to "Major Institutional Investors" as defined by Rule 15a-6(b)(4) of the Exchange Act and interpretations thereof by SEC (henceforth referred to as "major institutional investors"). This document must not be acted on or relied on by persons who are not major institutional investors. Any investment or investment activity to which this document relates is only available to major institutional investors and will be engaged in only with major institutional investors. In reliance on the exemption from registration provided by Rule 15a-6 of the U.S. Securities Exchange Act of 1934, as amended (the "Exchange Act") and interpretations thereof by the U.S. Securities and Exchange Commission ("SEC") in order to conduct business with Institutional Investors based in the U.S., MOFSL has entered into a chaperoning agreement with a U.S. registered broker-dealer, Motilal Oswal Securities International Private Limited. ("MOSIPL"). Any business interaction pursuant to this report will have to be executed within the provisions of this chaperoning agreement.

The Research Analysts contributing to the report may not be registered /qualified as research analyst with FINRA. Such research analyst may not be associated persons of the U.S. registered broker-dealer, MOSIPL, and therefore, may not be subject to NASD rule 2711 and NYSE Rule 472 restrictions on communication with a subject company, public appearances and trading securities held by a research analyst account.

For Singapore

In Singapore, this report is being distributed by Motilal Oswal Capital Markets Singapore Pte Ltd ("MOCMSPL") (Co.Reg. NO. 201129401Z) which is a holder of a capital markets services license and an exempt financial adviser in Singapore, as per the approved agreement under Paragraph 9 of Third Schedule of Securities and Futures Act (CAP 289) and Paragraph 11 of First Schedule of Financial Advisors Act (CAP 110) provided to MOCMSPL by Monetary Authority of Singapore. Persons in Singapore should contact MOCMSPL in respect of any matter arising from, or in connection with this report/publication/communication. This report is distributed solely to persons who qualify as "Institutional Investors", of which some of whom may consist of "accredited" institutional investors as defined in section 4A(1) of the Securities and Futures Act, Chapter 289 of Singapore ("the SFA"). Accordingly, if a Singapore person is not or ceases to be such an institutional investor, such Singapore Person must immediately discontinue any use of this Report and inform MOCMSPL.

Disclaimer:

This report is intended for distribution to Retail Investors.

The report and information contained herein is strictly confidential and meant solely for the selected recipient and may not be altered in any way, transmitted to, copied or distributed, in part or in whole, to any other person or to the media or reproduced in any form, without prior written consent. This report and information herein is solely for informational purpose and may not be used or considered as an offer document or solicitation of offer to buy or sell or subscribe for securities or other financial instruments. Nothing in this report constitutes investment, legal, accounting and tax advice or a representation that any investment or strategy is suitable or appropriate to your specific circumstances. The securities discussed and opinions expressed in this report may not be suitable for all investors, who must make their own investment decisions, based on their own investment objectives, financial positions and needs of specific recipient. This may not be taken in substitution for the exercise of independent judgment by any recipient. Each recipient of this document should make such investigations as it deems necessary to arrive at an independent evaluation of an investment in the securities of companies referred to in this document (including the merits and risks involved), and should consult its own advisors to determine the merits and risks of such an investment. The investment discussed or views expressed may not be suitable for all investors. Certain transactions -including those involving futures, options, another derivative products as well as non-investment grade securities - involve substantial risk and are not suitable for all investors. No representation or warranty, express or implied, is made as to the accuracy, completeness or fairness of the information and opinions contained in this document. The Disclosures of Interest Statement incorporated in this document is provided solely to enhance the transparency and should not be treated as endorsement of the views expressed in the report. This information is subject to change without any prior notice. The Company reserves the right to make modifications and alternations to this statement as may be required from time to time without any prior approval. MOFSL, its associates, their directors and the employees may from time to time, effect or have effected an own account transaction in, or deal as principal or agent in or for the securities mentioned in this document. They may perform or seek to perform investment banking or other services for, or solicit investment banking or other business from, any company referred to in this report. Each of these entities functions as a separate, distinct and independent of each other. The recipient should take this into account before interpreting the document. This report has been prepared on the basis of information that is already available in publicly accessible media or developed through analysis of MOFSL. The views expressed are those of the analyst, and the Company may or may not subscribe to all the views expressed therein. This document is being supplied to you solely for your information and may not be reproduced, redistributed or passed on, directly or indirectly, to any other person or published, copied, in whole or in part, for any purpose. This report is not directed or intended for distribution to, or use by, any person or entity who is a citizen or resident of or located in any locality, state, country or other jurisdiction, where such distribution, publication, availability or use would be contrary to law, regulation or which would subject MOFSL to any registration or licensing requirement within such jurisdiction. The securities described herein may or may not be eligible for sale in all jurisdictions or to certain category of investors. Persons in whose possession this document may come are required to inform themselves of and to observe such restriction. Neither the Firm, nor its directors, employees, agents or representatives shall be liable for any damages whether direct or indirect, incidental, special or consequential including lost revenue or lost profits that may arise from or in connection with the use of the information. The person accessing this information specifically agrees to exempt MOFSL or any of its affiliates or employees from, any and all responsibility/liability arising from such misuse and agrees not to hold MOFSL or any of its affiliates or employees responsible for any such misuse and further agrees to hold MOFSL or any of its affiliates or employees free and harmless from all losses, costs, damages, expenses that may be suffered by the person accessing this information due to any errors and delays.

This report is meant for the clients of Motilal Oswal only.

Investment in securities market are subject to market risks. Read all the related documents carefully before investing.

Registration granted by SEBI and certification from NISM in no way guarantee performance of the intermediary or provide any assurance of returns to investors.

Registered Office Address: Motilal Oswal Tower, Rahimtullah Sayani Road, Opposite Parel ST Depot, Prabhadevi, Mumbai-400025; Tel No.: 022 - 71934200 / 71934263; www.motilaloswal.com. Correspondence Address: Palm Spring Centre, 2nd Floor, Palm Court Complex, New Link Road, Malad (West), Mumbai- 400 064. Tel No: 022 71881000. Details of Compliance Officer: Neeraj Agarwal, Email Id: na@motilaloswal.com, Contact No.:022-40548085.

Grievance Redressal Cell:

Contact Person	Contact No.	Email ID
Ms. Hemangi Date	022 40548000 / 022 67490600	query@motilaloswal.com
Ms. Kumud Upadhyay	022 40548082	servicehead@motilaloswal.com
Mr. Ajay Menon	022 40548083	am@motilaloswal.com

Registration details of group entities.: Motilal Oswal Financial Services Ltd. (MOFSL): INZ000158836 (BSE/NSE/MCX/NCDEX); CDSL and NSDL: IN-DP-16-2015; Research Analyst: INH000000412 . AMFI: ARN .: 146822. IRDA Corporate Agent – CA0579. Motilal Oswal Financial Services Ltd. is a distributor of Mutual Funds, PMS, Fixed Deposit, Insurance, Bond, NCDs and IPO products.

Customer having any query/feedback/ clarification may write to query@motilaloswal.com. In case of grievances for any of the services rendered by Motilal Oswal Financial Services Limited (MOFSL) write to grievances@motilaloswal.com, for DP to dp grievances@motilaloswal.com.