



---

# Abakkus Investment Profile



# Introducing Abakkus Asset Manager LLP

- Abakkus is an alpha-focused boutique asset manager managing roughly INR 27,700 crores\* in long-only strategies for Indian equities
- Our offerings include
  - Close-ended Category III Alternative Investment Funds
  - Portfolio Management Services
  - Advisory Services for Domestic and Global Investors
  - UCITS Funds
- In just 5 years of incorporation Abakkus has established itself in the Indian equity horizon both in terms of performance and growth in assets
- Ambition and vision is to make Abakkus India's revered asset managers over time

\*Data as on 31st January 2024



# We are net carbon negative

- As a part of the 'Cauvery Calling' project, we planted more than 2400 trees in the Cauvery region of Tamil Nadu – the carbon equivalent of 50.4 metric tons of CO<sub>2</sub>e much higher than our carbon footprint of 33 metric tons resulting in our company to be net carbon negative. (CY\*-2019)
- The project aims to restore the biodiversity of Cauvery basin and the thriving food chain that depends on it. 84 million inhabitants could be positively benefitted by the effort



**CLIMATE  
NEUTRAL  
NOW**

ACHIEVEMENT 2021	
MEASURE	● BRONZE
REDUCE	● BRONZE
CONTRIBUTE	● SILVER
JOINED 2022	

- Our belief in the idea of an environmentally and socially sustainable future has led us to take up the responsibility and resources to achieve actionable change.
- The cook stove project was an initiative to distribute **3500 cooking stoves** to rural households that still use conventional kerosene burners. (CY\*- 2021)
- This will result in a **reduction of CO<sub>2</sub> emissions by 12250 tons per year** (Estimated) from the environment .
- All this while having net negative carbon footprint.
- Also, achieved climate neutral badge for our contribution in Climate neutral mission(CY-2022)



# Bridging the gap of gender diversity



- ✓ We are committed to gender diversity, currently one of the weakest in India (industry average of only 20% women at work)
- ✓ We support the 'Young Women In Investment initiative' by CFA Institute.
- ✓ The G8 accredited program 2020 creates awareness about financial careers and facilitates participation of women in the financial sector.
- ✓ A four-week boot-camp for women which is followed by paid internships at reputable financial institutions, including Abakkus. (CY\*- 2019)
- ✓ We are committed to reach 30% gender diversity ratio by the year 2025 as we expand our research and administrative team over the coming years.

## Empowering Children

- ✓ India harbors one of the largest population of adolescents on the planet, would stand to benefit massively if adolescents are well fed and educated.
- ✓ We worked with the Cosmic Divine Society to feed around 1200 children for a period of 1 week every year for the last 4 years. We strongly believe that our children are the governors of our future, and their nurturing is necessary for our country to prosper. (Since CY-2018)
- ✓ We also worked with Vallabhdas Dagara Indian Society to foster and care for the mentally challenged kids in India. We took the responsibility of co-parenting 20 children for a period for the last 2 years which includes training and teaching them to be skilled, employable and independent. (Since CY- 2020)

# Industry Participation

- ✓ Abakkus is an active member of the following industry associations / bodies for promotion of the industry at large and the broader investment community.



APMI is an entity entrusted with promoting uniformity and best practices in PMS industry.

To fulfill this role, APMI will primarily draw upon the expertise already available with its members and Abakkus representatives are part of the APMI Board and several operational committees.



IVCA is a non-profit organization that serves as a prominent apex industry body dedicated to promoting the alternate capital industry in India.

IVCA is resolutely committed to bolstering the ecosystem by advocating regulatory interventions, facilitating constructive dialogues with the SEBI and other governmental bodies.



ARIA was born out of the need to support the development of the investment adviser community in India.

ARIA is a representative of communities interest to the regulatory and other stakeholders.



## Sunil Singhania

Founder  
Abakkus Asset Manager LLP

## About the founder

- Former CIO Equities of Reliance Nippon Life Asset Management (now Nippon Life India Asset Management) overseeing ~USD 11 billion of equity assets
- First Indian to be appointed to the Global Board of CFA Institute, USA (2013-2019)
- Ex-Honorary Chairman of Investment Committee of CFA Institute (2018-19)
- Rated as among the best fund managers (Rated best Fund Manager by Outlook Business in 2016 & 2017 over 10-year time frame)
- CA & CFA Charter Holder

# Investment philosophy

## Risk reward equation

- Expected returns must justify the risk / uncertainty taken
- A good company might not necessarily be a good stock
- Focus on the price we pay, and value derived
- What is in the price?

## Patient investors

- Buy and hold
- Invest in a stock as if investing in a business
- Think like a partner

## Agile and flexible

- Each investment opportunity is looked upon individual merit
- Not constrained to a particular theme or style



## Alpha generators

- Believe in investing with an endeavor to generate alpha over the markets rather than just allocating within benchmark index
- Growth companies where profitability is expected to grow higher than market average
- Fundamentally underpriced stocks with reasonable growth expectations
- Mid Cap companies with a scalable business model and growth potential to become large cap

## Fundamental driven

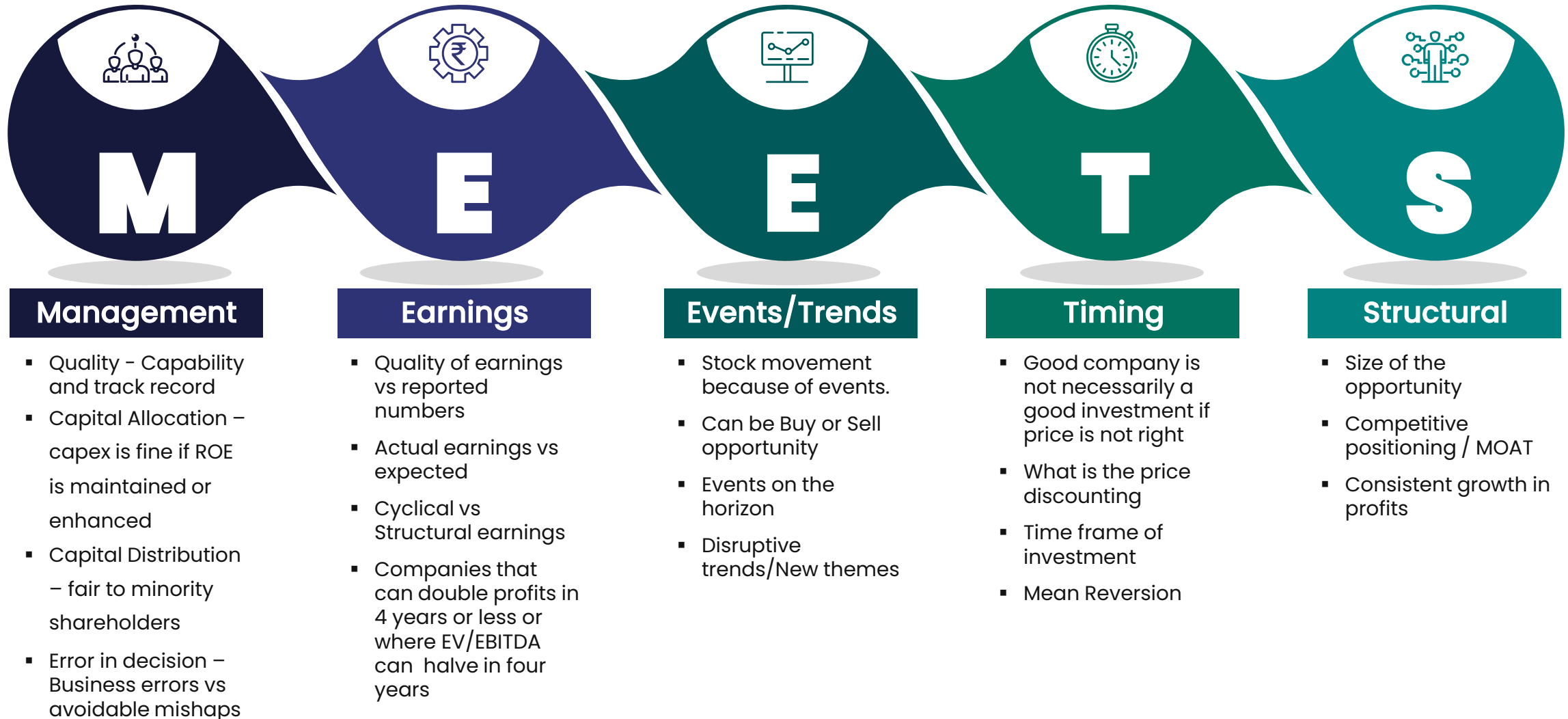
- Bottom-up research with focus on balance sheet
- Numbers speak more than presentations and hype
- Returns ultimately are all about earnings

## Happy to be contrarian

- Prefer to be first, early and/or only investors
- Do not chase the momentum
- Open to look at companies across sectors, market caps and business cycles



# Our unique MEETS framework





# 5D Investment process

## DISCOVER

From universe of **6000** companies, **~1500** companies are investable

## DELVE

Deeper into **~350** companies with the help of experienced investment team using MEETS framework

## DEVELOP

Macro and micro analysis on **>100** companies

## DETAIL

Idea generation on **~75** stocks

## DELIVER

Portfolio construction and risk monitoring of **~30\*** stocks

### LEADS

### MEETS FRAMEWORK

### ANALYSIS

### PORTFOLIO CONSTRUCTION

### PORTFOLIO MANAGEMENT

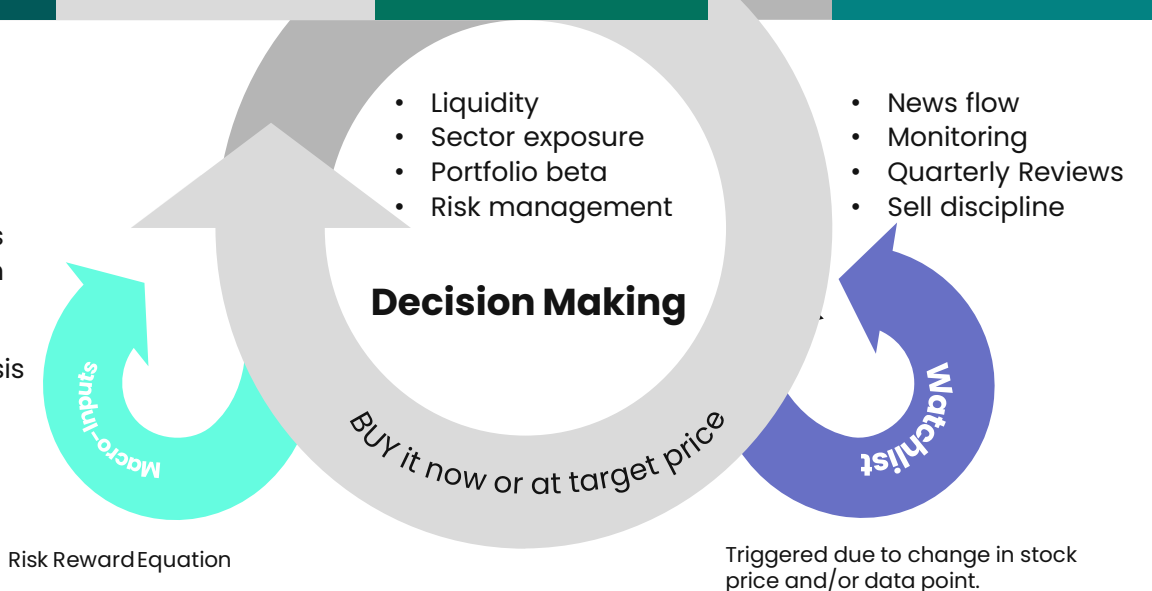
- Annual report
- Analysts & reports
- In-house screeners
- Team experience
- Ecosystem
- News flow

- Management quality
- Earnings
- Events
- Timing
- Structural

- Management meetings
- Competitive advantage
- Potential triggers
- Peer comparison
- Financial modelling and sensitivity analysis

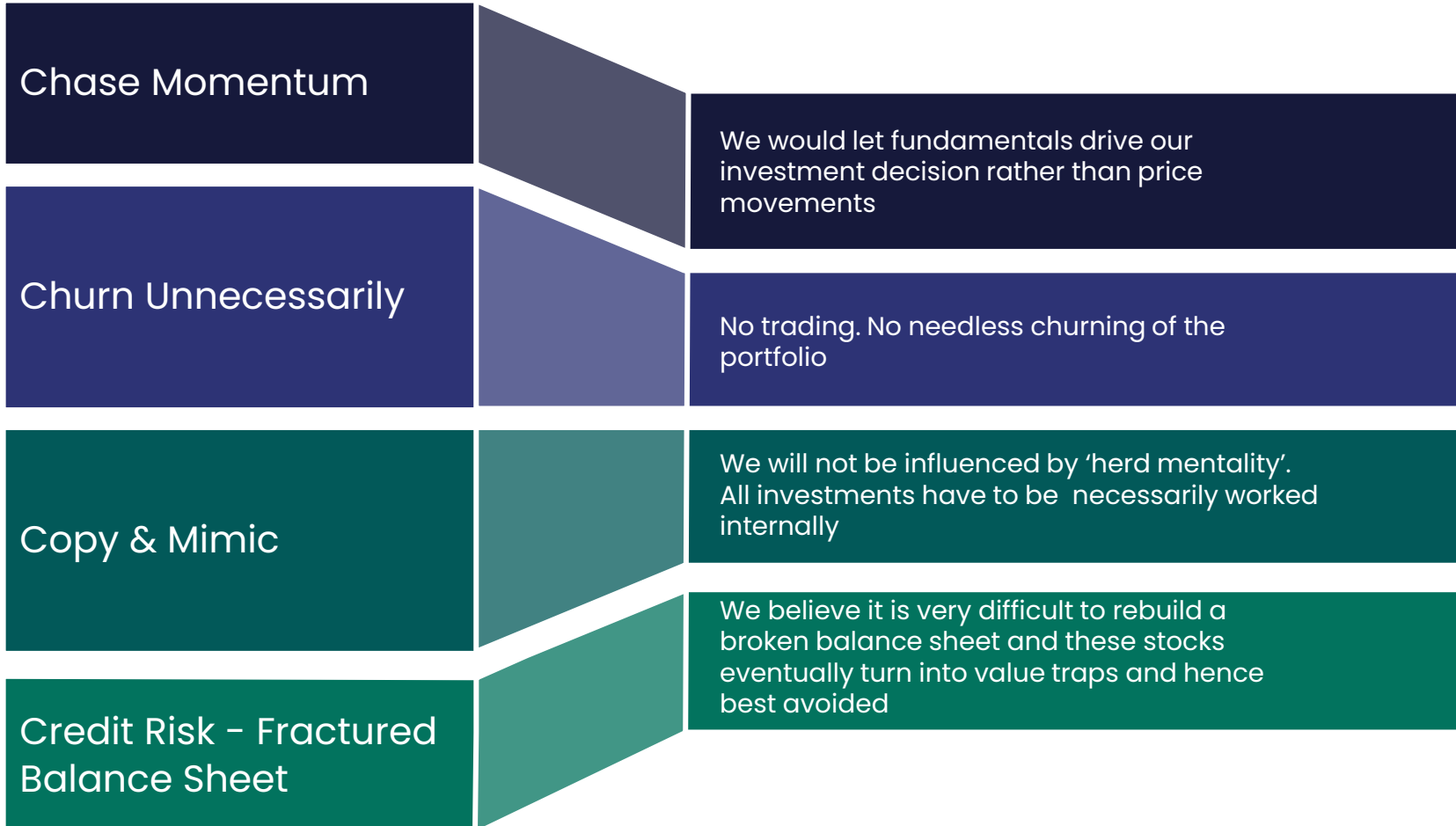
- Liquidity
- Sector exposure
- Portfolio beta
- Risk management

- News flow
- Monitoring
- Quarterly Reviews
- Sell discipline



# What we won't do

Avoid the four "C"s



## Exit Discipline

- Fundamentals don't pan out as expected due to sector deterioration, company specific issues, governance issues.
- Not shy to accept when thesis goes wrong.
- Stocks may do much better than expected.
- Position becomes insignificant and can't / don't want to add.
- New investment idea better than existing holding in terms of risk reward.

# Risk management



# Why us

## Experience

Backed by a well-qualified dedicated team of professionals that have cumulative experience of ~200 years

## Performance

A well-established performance track record over 2 decades in public equity funds and across all market cycles

## Commitment

Follow a start-up culture with high degree of commitment, urgency and passion



## Positioning

Focused investment in Alpha plays beyond the large number of listed companies supported by non-consensus, in-house research and independent thoughts

## Opportunistic

Greater flexibility in investing into new sectors, new themes which are backed by entrepreneur driven economy

## Consistent

Investment team has delivered consistently across market cycles



# Abakkus Emerging Opportunities Approach (PMS)

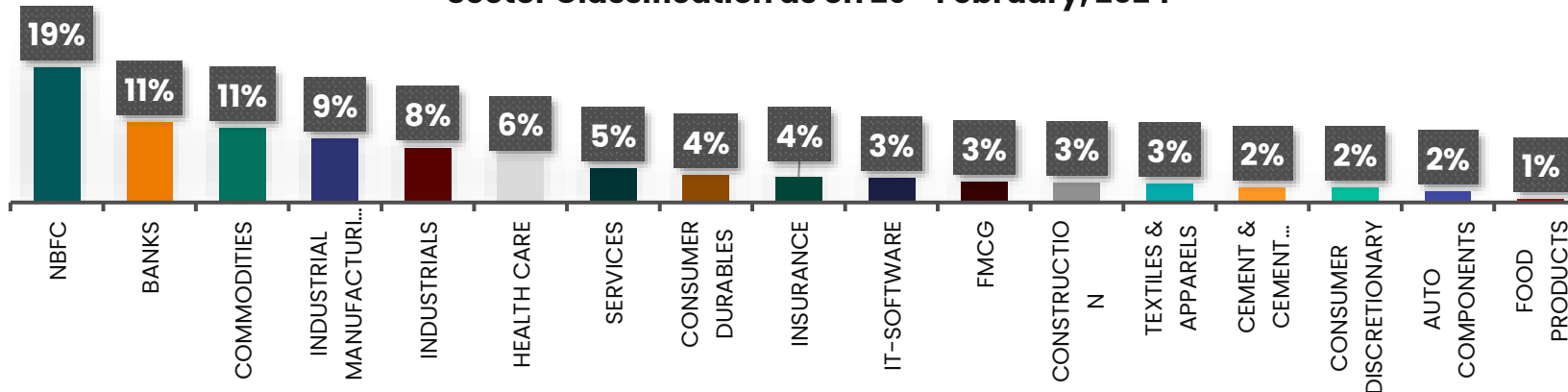
- Benchmark agnostic diversified portfolio with bias towards mid and small cap
- 15: 15: 15 discipline: Invest predominantly in companies qualifying in at least 2 out of these 3 criteria:
  - >15% ROE
  - >15% earnings growth
  - < 15 P/E Ratio
- Being value conscious investor prefer investing in 2nd or 3rd player vs paying abnormal premium to the leader
- Fundamental research-based investing
- Endeavor to generate alpha and wealth creation by investing with 3-5 years holding period
- Differentiated Portfolio picked on a bottom-up basis and adhering to our "MEETS" Framework



## Top 10 Holdings\*

- 1 JINDAL STAINLESS LIMITED
- 2 ANUP ENGINEERING LIMITED
- 3 ION EXCHANGE INDIA LIMITED
- 4 FEDERAL BANK LIMITED
- 5 IIFL FINANCE LIMITED
- 6 PNB HOUSING FINANCE LIMITED
- 7 UJJIVAN FINANCIAL SERVICES LIMITED
- 8 SARDA ENERGY AND MINERALS LIMITED
- 9 CANARA BANK
- 10 IDFC LIMITED

### Sector Classification as on 29<sup>th</sup> February, 2024



Note: Data as on February 29<sup>th</sup>, 2024

\*The stocks are for representational purpose only and are not recommendations to invest and the portfolio manager may or may not have exposure to the same. Sector classification as per Abakkus internal classification. PMS (Portfolio Management Services): Separately Managed Account. Investments in the securities market are subject to market risks. Read all the related documents carefully before investing. The securities quoted are for illustration only and are not recommendatory purposes

# Abakkus Emerging Opportunities Approach (PMS)



Returns as on February 29, 2024

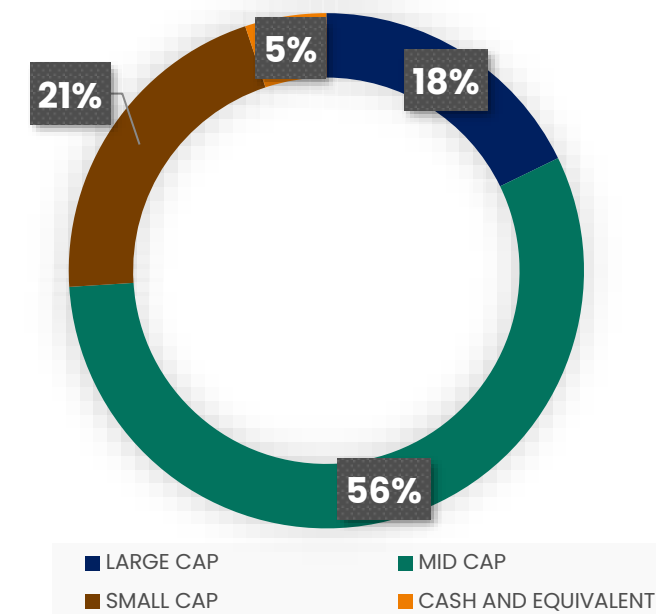
Period	1 Month (%)	3 Month (%)	6 Month (%)	1 Year (%)	2 Year (%)	3 Year (%)	Since Inception (%) - CAGR	Since Inception (%) - Absolute
<b>Abakkus Emerging Opportunities Approach</b>	-1.1	2.9	9.7	55.3	25.4	31.8	38.1	210.4
<b>S&amp;P BSE 500 TRI</b>	1.7	11.9	18.9	39.5	19.8	19.5	25.1	118.4

Inception Date is August 26, 2020.

Unaudited Performance data for Portfolio Manager and Investment Approach provided hereunder is not verified by any regulatory authority and Past performance may or may not sustain in the future. The performance is based on TWRR as on February 29<sup>th</sup>, 2024. As per SEBI guidelines, returns are net of all expenses and investor returns may differ, based on their period of investment, fee structure and point of capital flows. Please note that performance of your portfolio may vary from that of other investors and that generated by the Investment Approach across all investors because of;

- 1) the timing of inflows and outflows of funds; and
- 2) differences in the portfolio composition because of restrictions and other constraints.

As per SEBI circular SEBI/HO/IMD/IMD-PoD-2/P/CIR/2022/172 dated December 16, 2022, the comparison of the relative performance of the investment approach with other portfolio managers is available at <https://www.apmiindia.org/apmi/IACompare.htm?action=iacomaprepage>



Source: Abakkus Internal Market cap classification. Investor portfolio may differ based on their period of investment, investment amount & point of capital flows

# Abakkus Emerging Opportunities Approach (PMS)



## Investment Approach Features

Investment Approach	Abakkus Emerging Opportunities Approach PMS
Minimum Investment	INR 50 lacs
Benchmark	S&P BSE 500 TRI
Fund Manager	Sunil Singhanian / Aman Chowhan
Custody	HDFC Bank, Kotak Mahindra Bank & ICICI Bank

## Fee Structure

Fee Type*	Fixed Management Fees	Performance Fees
Fixed Option	2.50% p.a.	Nil
Fixed + Variable Option	1.75% p.a.	15% sharing over 9% hurdle rate (Annual with high watermark)

**Exit Load** Between 0 and 12 months from investment date: 1.5%  
Post 12 months from investment date: 0%

\*Plus operating expenses, brokerage costs, GST and all statutory levies as applicable. For more details on fees, please refer to PMS agreement, disclosure document and other related documents. PMS (Portfolio Management Services): Separately Managed Account. Data as on February 29<sup>th</sup>, 2024

# Focus on fundamentals



Strategy has superior return ratios and trade at discount to Nifty valuations

Abakkus Emerging Opportunities Approach	FY24E*	FY25E*
PE (ex-financials)	21.9	17.8
PB	2.07	1.78
PAT Growth % (ex-financials)	12%	23%
ROE %	13.3	13.9
D/E (ex-financials)	0.2	0.1
PE (including financials)	17.1	13.8
PAT Growth (including financials)	21%	24%

Data for both the funds as of 29th February 2024, E\*= Estimated, A\*\*= Actuals. Source: Abakkus Estimates



# Team profile

Abakkus has a 70-member strong team with cumulative work experience of more than 200 years. Our team has substantial experience in tracking global equities across all market cycles. Sunil Singhania, the founder of Abakkus and who leads our team, has a successful, recognized and well-established performance track record in public equity funds. Our committed and strong team has extensive qualifications including 42 Master's Degree Holders, 3 CFA Charter Holder and, 7 Chartered Accountants.



**Aman Chowhan**

Senior Fund Manager

**Qualification:** BCOM, MBA

**Total Work Experience:** 24 years

**Past Organization:**

Nippon Life AMC, TAIB Securities, Tata TD Waterhouse



**Hitesh Arora**

Fund Manager

**Qualification:** B.Tech, MS, MBA, CFA

**Total Work Experience:** 19 years

**Past Organization:**

Unifi Capital, Deutsche Bank, J.P. Morgan



**Biharilal Deora**

Director

**Qualification:** BCOM, MCOM, FCA, CFA, CIPM, CFP

**Total Work Experience:** 21 years

**Past Organization:**

Credit Suisse, Fidelity Investments



**Manish Kanojia**

National Sales Head

**Qualification:** BCOM, MBA

**Total Work Experience:** 18 years

**Past Organization:**

Nippon Life AMC, Principal PNB AMC, Kotak AMC



**Rajesh Thongepatil**

Senior VP - Operations

**Qualification:** BCOM, DBM

**Total Work Experience:** 20 years

**Past Organization:**

ASK Investment Managers, Motilal Oswal AMC



**Chetan Vora**

Sr. Research Analyst

**Qualification:** BCOM, CA, CFA Level 2 Cleared

**Total Work Experience:** 18 years

**Past Organization:**

Valuequest Inv. Advisors, Edelweiss



**Nikhil Gada**

Sr. Research Analyst

**Qualification:** B.E. (EXTC), MBA

**Total Work Experience:** 11 years

**Past Organization:**

Asian Markets Securities (AMSEC), CLSA, Morgan Stanley, ZyFin Research



**Nirav Savai**

Sr. Research Analyst

**Qualification:** BCOM, PGDM

**Total Work Experience:** 18 Years

**Past Organization:**

HDFC Securities, JM Financial



**Dewang Sanghavi**

Sr. Research Analyst

**Qualification:** MBA, Finance

**Total Work Experience:** 17 years

**Past Organization:**

ICICI Securities

# Team profile



**Foram Bauva**

Research Analyst

**Qualification:** BCOM, CA

**Total Work Experience:** 10 years

**Past Organization:**

K.N.G & Co.



**Varun Ghia**

Research Analyst

**Qualification:** BFM, CFA

**Total Work Experience:** 9 years

**Past Organization:**

Dimensional Securities



**Mudita Nahar**

Research Analyst

**Qualification:** BCOM, CA, CS, CFA

Level 1 cleared

**Total Work Experience:** 6 years

**Past Organization:**

Grant Thornton, Tata Capital,  
RBL Bank



**Neha Raichura**

Research Analyst

**Qualification:** MCOM, CFA Level 3

Cleared

**Total Work Experience:** 5 years

**Past Organization:**

Taurus Asset Management & KR  
Choksey



**Pathik Doshi**

Research Analyst

**Qualification:** BAF, PGDM

**Total Work Experience:** 5 years

**Past Organization:**

Yes Securities



**Akshay Shah**

Senior Manager – Dealing

**Qualification:** BCOM, MBA, CFA

Level 1 cleared

**Total Work Experience:** 18 years

**Past Organization:**

Elara Capital, First Global  
Securities, Indiabulls Securities



**Sharmila Thakker**

Manager – Dealing

**Qualification:** MCOM

**Total Work Experience:** 17 years

**Past Organization:**

Nirmal Bang Equities Pvt Ltd

# Other disclosures and disclaimers



The person accessing this information specifically agrees to exempt/absolve the Abakkus or any of its affiliates or employees from, any and all responsibility/liability arising from such misuse/improper/ illegal use and agrees not to hold the Abakkus or any of its affiliates or employees responsible for any such misuse/improper/illegal use and further agrees to hold the Abakkus or any of its affiliates or employees free and harmless from all losses, costs, damages, expenses that may be suffered by the person accessing this information due to any errors and delays. Abakkus (including its affiliates) and any of its Partners, officers, employees, and other personnel will not accept any liability, loss, damage of any nature, including but not limited to direct, indirect, punitive, special, exemplary, consequential, as also any loss of profit in any way arising from the use of this website/email/document or any information in any manner whatsoever. This website/email/document may include certain forward-looking words, statements and scenario which contain words or phrases such as "believe", "expect", "anticipate", "estimate", "intend", "plan", "objective", "goal", "project", "endeavor" and similar expressions or variations of such expressions that are forward-looking statements, words, and scenario. Actual results may differ materially from those suggested by the forward-looking statements due to risks, uncertainties, or assumptions. Abakkus takes no responsibility of updating any data/information. The contents of this website/email/document cannot be copied, reproduced, in whole or in part or otherwise distributed without prior written approval of the Abakkus. Prospective investors/clients are advised to review this website/email/document, the Private Placement Memorandum/Disclosure Document, the Contribution Agreement/Client Agreement, representations and presentation(s) and other related documents carefully and in its entirety and seek clarification wherever required from the SEBI Registered Intermediary/Abakkus. Prospective investors should make an independent assessment, and consult their own counsel, business advisor and tax advisor as to legal, business and tax related matters concerning this document and the other related documents before becoming investing with /through the Abakkus/in the Fund. The information contained in this website/email/document has been prepared for general guidance and does not constitute a professional advice/assurance and no person should act upon any information contained herein without obtaining specific professional advice/Assurance. Neither the Abakkus nor its Affiliates or advisors would be held responsible for any reliance placed on the content of this document or for any decision based on it. Each existing/prospective client, by accepting delivery of this document agrees to the foregoing. The investment portfolio are subject to several risk factors including but not limited to political, legal, social, economic, and overall market risks. The recipient alone shall be fully responsible/are liable for any decision taken on the basis of this document. Abakkus, its partners, employees, PMS clients, AIF scheme(s), Advisory clients may have existing exposure to the stocks that form part of the PMS portfolio/Advisory portfolio/AIF scheme(s). Further, in view of the investment objective/strategy of the PMS /Advisory and AIF scheme(s) there may be situations where Abakkus may be selling a stock which is part of the PMS portfolio/Advisory portfolio/AIF scheme as the case may be. Abakkus (including its affiliates) may offer services in nature of advisory, consultancy, portfolio management, sponsorship of funds, investment management of funds which may conflict with each other. Abakkus operates from within India and is subject to Indian laws and any dispute shall be resolved in the courts of Mumbai, Maharashtra only.

## **Alternative Investment Fund (AIF)**

As per SEBI Circular No. SEBI/HO/IMD/DF6/CIR/P/2020/24 dated February 05, 2020, details of industry benchmark and AIF level performance versus Benchmark Reports are available at <https://www.crisil.com/en/home/what-we-do/financial-products/alternate-investment-funds-benchmarks.html> and <https://www.nseindia.com/products-services/aif-benchmark-report> Compliance Officer: Mr. Biharilal Deora, Tel: 022-68846600 | For Queries/Grievances - Email - [complianceteam@abakkusinvest.com](mailto:complianceteam@abakkusinvest.com)

## **Portfolio Management Services (PMS)**

You may refer the Disclosure Document available at <https://abakkusinvest.com/regulatory-disclosure/> for detailed disclosures.

Principal Officer: Mr. Aman Chowhan, Tel: 022-68846600 | Compliance Officer: Mr. Biharilal Deora, Tel: 022-68846600

## **Investment Advisory Services**

You may refer the Disclosure Document available at <https://abakkusinvest.com/regulatory-disclosure/> for detailed disclosures.

Principal Officer: Mr. Biharilal Deora, Tel: 022-68846600 | Compliance Officer: Mr. Lijo Varghese, Tel: 022-68846600

# Contact us



Product related queries write at:

[products@abakkusinvest.com](mailto:products@abakkusinvest.com)

Investor servicing queries write at:

[abakkus@camsonline.com](mailto:abakkus@camsonline.com) (AIF)  
[service@abakkusinvest.com](mailto:service@abakkusinvest.com) (PMS)

Onboarding queries write at:

[onboarding@abakkusinvest.com](mailto:onboarding@abakkusinvest.com)

Call us at 022-68846600 or write at:

[info@abakkusinvest.com](mailto:info@abakkusinvest.com)

Abakkus Corporate Center,  
Param House, 6th Floor,  
Off Santacruz – Chembur Link Road,  
Adjacent to Primus Residences,  
Shanti Nagar, Santacruz East, Mumbai,  
Maharashtra 400055

LLPIN: AAM-2364

